



Technical drawing showing cross-sections of Aeroquip fittings. Labels include 'A', 'B', 'P₁', '37°', and '90°'. The drawing illustrates the internal structure of the fittings, including the O-ring groove and the internal threads.

EAT•N Aeroquip

Stainless Steel Adapters



Stainless Steel Adapters

Aeroquip stainless steel adapters are manufactured from 316 stainless steel for excellent corrosive resistance. All parts meet dimensional and performance requirements of SAE J514.

Additionally, all parts are passivated after machining to increase corrosive protection.

Applications

- Marine/Military
- Chemical Processing
- Pulp and Paper Industry
- Food and Beverage Processing
- Off-Shore Drilling

Note: Stainless steel threaded products are susceptible to galling. Sealing surfaces and threads may be severely damaged due to the high pressure associated with assembly. It is recommended that a high-pressure lubricant be used to prevent galling.



Torque Requirements

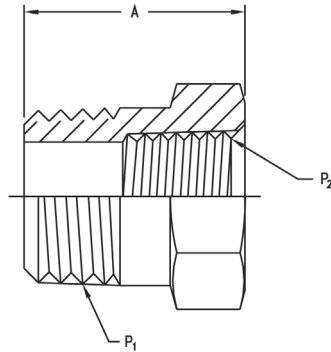
SAE DEGREE (JIC)

Dash Size	Thread Size (Inches)	Swivel Nut Torque	
		Ft./Lbs.	Newton Meters
-04	7/16-20	11-12	15-16
-05	1/2-20	15-16	20-22
-06	9/16-18	18-20	24-28
-08	3/4-16	38-42	52-88
-10	7/8-14	57-62	77-85
-12	1 1/16-12	79-87	108-119
-16	1 5/16-12	108-113	148-154
-20	1 5/8-12	127-133	173-182
-24	1 7/8-12	158-167	216-227
-32	2 1/2-12	245-258	334-352

STRAIGHT THREAD O-RING Low pressure with 37° (SAE J514)

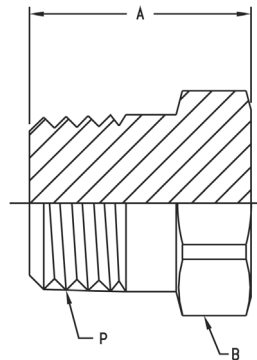
Dash Size	Thread Size (Inches)	Swivel Nut Torque	
		Ft./Lbs.	Newton Meters
-03	3/8-24	8-9	12-13
-04	7/16-20	13-15	18-20
-05	1/2-20	14-15	19-21
-06	9/16-18	23-24	32-33
-08	3/4-16	40-43	55-57
-10	7/8-14	43-48	59-64
-12	1 1/16-12	68-75	93-101
-14	1 3/16-12	83-90	113-122
-16	1 5/16-12	112-123	152-166
-20	1 5/8-12	146-161	198-218
-24	1 7/8-12	154-170	209-230
-32	2 1/2-12	218-240	296-325

Pipe NPTF to NPTF



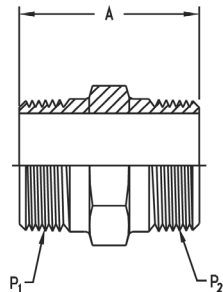
REDUCER BUSHINGS

Part Number	Thread P1	Thread P2	A
259-2081-4-2	1/4-18	1/8-27	.85
259-2081-6-2	3/8-18	1/8-27	.85
259-2081-6-4	3/8-18	1/4-18	1.00
259-2081-8-2	1/2-14	1/8-27	1.10
259-2081-8-4	1/2-14	1/4-18	1.10
259-2081-8-6	1/2-14	3/8-18	1.12
259-2081-12-4	3/4-14	1/4-18	1.17
259-2081-12-6	3/4-14	3/8-18	1.17
259-2081-12-8	3/4-14	1/2-14	1.36
259-2081-16-6	1-11 1/2	3/8-18	1.36
259-2081-16-8	1-11 1/2	1/2-14	1.36
259-2081-16-12	1-11 1/2	3/4-14	1.49
259-2081-20-12	1 1/4-11 1/2	3/4-14	1.47
259-2081-20-16	1 1/4-11 1/2	1-11 1/2	1.61
259-2081-24-12	1 1/2-11 1/2	3/4-14	1.57
259-2081-24-16	1 1/2-11 1/2	1-11 1/2	1.57
259-2081-32-16	2-11 1/2	1-11 1/2	1.75
259-2081-32-20	2-11 1/2	1 1/4-11 1/2	1.75
259-2081-32-24	2-11 1/2	1 1/2-11 1/2	1.75



PLUGS

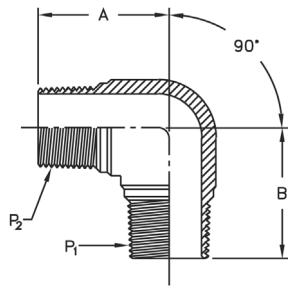
Part Number	Thread P	A	B
259-2082-2	1/8-27	.58	.44
259-2082-4	1/4-18	.76	.56
259-2082-6	3/8-18	.79	.69
259-2082-8	1/2-14	.98	.88
259-2082-12	3/4-14	1.08	1.06
259-2082-16	1-11 1/2	1.27	1.31
259-2082-20	1 1/4-11 1/2	1.30	1.75
259-2082-24	1 1/2-11 1/2	1.33	2.00
259-2082-32	2-11 1/2	1.39	2.50



HEXAGON PIPE NIPPLES

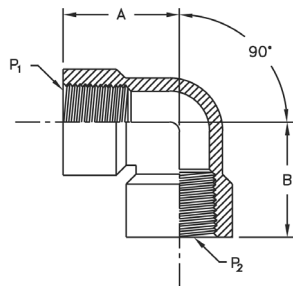
Part Number	Thread P1	Thread P2	A
259-2083-4-4	1/4-18	1/4-18	1.45
259-2083-6-4	3/8-18	1/4-18	1.45
259-2083-6-6	3/8-18	3/8-18	1.45
259-2083-8-6	1/2-14	3/8-18	1.70
259-2083-8-8	1/2-14	1/2-14	1.89
259-2083-12-8	3/4-14	1/2-14	1.96
259-2083-12-12	3/4-14	3/4-14	1.96
259-2083-16-12	1-11 1/2	3/4-14	2.15
259-2083-16-16	1-11 1/2	1-11 1/2	2.34
259-2083-20-16	1 1/4-11 1/2	1-11 1/2	2.45
259-2083-20-20	1 1/4-11 1/2	1 1/4-11 1/2	2.48
259-2083-24-24	1 1/2-11 1/2	1 1/2-11 1/2	2.61

**Pipe NPTF to NPTF
(cont.)**



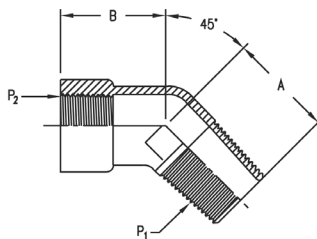
90 DEGREE MALE PIPE ELBOWS

Part Number	Thread P1	Thread P2	A	B
259-2085-4-4	1/4-18	1/4-18	1.09	1.09
259-2085-6-4	3/8-18	1/4-18	1.22	1.22
259-2085-6-6	3/8-18	3/8-18	1.22	1.22
259-2085-8-6	1/2-14	3/8-18	1.47	1.28
259-2085-8-8	1/2-14	1/2-14	1.47	1.47
259-2085-12-12	3/4-14	3/4-14	1.59	1.59
259-2085-16-16	1-11 1/2	1-11 1/2	1.97	1.97



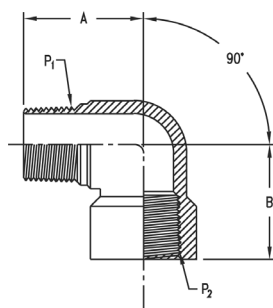
90 DEGREE FEMALE PIPE ELBOWS

Part Number	Thread P1	Thread P2	A	B
259-2087-4-4	1/4-18	1/4-18	.88	.88
259-2087-6-6	3/8-18	3/8-18	1.02	1.02
259-2087-8-6	1/2-14	3/8-18	1.23	1.01
259-2087-8-8	1/2-14	1/2-14	1.23	1.23
259-2087-12-12	3/4-14	3/4-14	1.36	1.36
259-2087-16-16	1-11 1/2	1-11 1/2	1.62	1.62
259-2087-20-20	1 1/4-11 1/2	1 1/4-11 1/2	1.70	1.70



45 DEGREE PIPE STREET ELBOWS

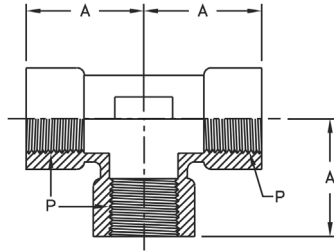
Part Number	Thread P1	Thread P2	A	B
259-2088-4-4	1/4-18	1/4-18	1.05	.62
259-2088-6-6	3/8-18	3/8-18	1.06	.72
259-2088-8-8	1/2-14	1/2-14	1.34	.91
259-2088-12-12	3/4-14	3/4-14	1.38	.97
259-2088-16-16	1-11 1/2	1-11 1/2	1.72	1.12



90 DEGREE PIPE STREET ELBOWS

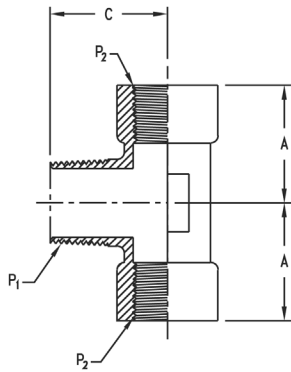
Part Number	Thread P1	Thread P2	A	B
259-2089-4-4	1/4-18	1/4-18	1.09	.88
259-2089-4-6	1/4-18	3/8-18	1.22	1.02
259-2089-6-4	3/8-18	1/4-18	1.22	.95
259-2089-6-6	3/8-18	3/8-18	1.22	1.02
259-2089-6-8	3/8-18	1/2-14	1.28	1.23
259-2089-8-6	1/2-14	3/8-18	1.47	1.12
259-2089-8-8	1/2-14	1/2-14	1.47	1.23
259-2089-12-8	3/4-14	1/2-14	1.59	1.35
259-2089-12-12	3/4-14	3/4-14	1.59	1.36
259-2089-16-16	1-11 1/2	1-11 1/2	1.97	1.62
259-2089-20-20	1 1/4-11 1/2	1 1/4-11 1/2	2.38	1.70
259-2089-24-24	1 1/2-11 1/2	1 1/2-11 1/2	2.64	2.08

**Pipe NPTF to NPTF
(cont.)**



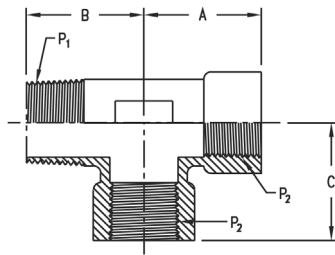
FEMALE PIPE TEE

Part Number	Thread P	A
259-2090-4-4	1/4-18	.88
259-2090-6-6	3/8-18	1.02
259-2090-8-8	1/2-14	1.23
259-2090-12-12	3/4-14	1.36
259-2090-16-16	1-11 1/2	1.62
259-2090-20-20	1 1/4-11 1/2	1.70
259-2090-24-24	1 1/2-11 1/2	2.08



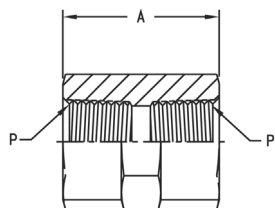
MALE BRANCH TEE

Part Number	Thread P1	Thread P2	A	C
259-2091-4-4	1/4-18	1/4-18	.88	1.09
259-2091-6-6	3/8-18	3/8-18	1.02	1.22
259-2091-8-8	1/2-14	1/2-14	1.23	1.47
259-2091-12-12	3/4-14	3/4-14	1.36	1.59
259-2091-16-16	1-11 1/2	1-11 1/2	1.62	1.97



STREET TEE

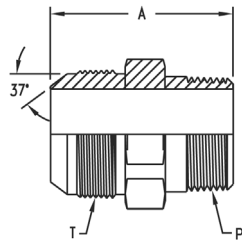
Part Number	Thread P1	Thread P2	A	B	C
259-2092-4-4	1/4-18	1/4-18	.88	1.09	.88
259-2092-6-6	3/8-18	3/8-18	1.02	1.22	1.02
259-2092-8-8	1/2-14	1/2-14	1.23	1.47	1.23
259-2092-12-12	3/4-14	3/4-14	1.36	1.59	1.36
259-2092-16-16	1-11 1/2	1-11 1/2	1.62	1.97	1.62
259-2092-20-20	1 1/4-11 1/2	1 1/4-11 1/2	1.70	2.38	1.70



HEXAGON PIPE COUPLING

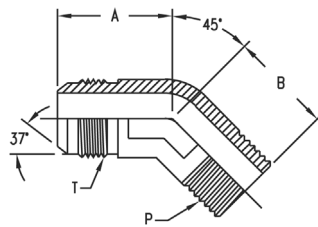
Part Number	Thread P	A
259-2096-4	1/4-18	1.13
259-2096-6	3/8-18	1.13
259-2096-8	1/2-14	1.50
259-2096-12	3/4-14	1.53
259-2096-16	1-11 1/2	1.89
259-2096-20	1 1/4-11 1/2	1.93
259-2096-24	1 1/2-11 1/2	1.93

Pipe NPT to SAE 37 Degree Flare



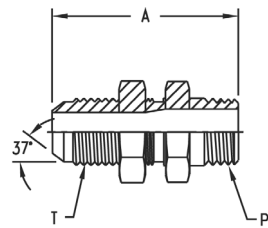
MALE CONNECTOR

Part Number	Tube O.D.	Thread P	Thread T	A
259-2021-4-4	.25	1/4-18	7/16-20	1.42
259-2021-4-6	.38	1/4-18	9/16-18	1.43
259-2021-6-6	.38	3/8-18	9/16-18	1.43
259-2021-6-8	.50	3/8-18	3/4-16	1.53
259-2021-8-8	.50	1/2-14	3/4-16	1.79
259-2021-12-12	.75	3/4-14	1 1/16-12	2.06
259-2021-16-16	1.00	1-11 1/2	1 5/16-12	2.30
259-2021-16-20	1.25	1-11 1/2	1 5/8-12	2.42
259-2021-20-16	1.00	1 1/4-11 1/2	1 5/16-12	2.40
259-2021-20-20	1.25	1 1/4-11 1/2	1 5/8-12	2.45



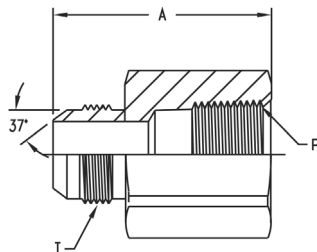
45 DEGREE MALE ELBOW

Part Number	Tube O.D.	Thread P	Thread T	A	B
259-2023-4-4	.25	1/4-18	7/16-20	.82	.86
259-2023-6-6	.38	3/8-18	9/16-18	.88	.95
259-2023-6-8	.50	3/8-18	3/4-16	.98	.95
259-2023-8-6	.38	1/2-14	9/16-18	.91	1.17
259-2023-8-8	.50	1/2-14	3/4-16	1.00	1.17
259-2023-12-12	.75	3/4-14	1 1/16-12	1.28	1.20
259-2023-16-16	1.00	1-11 1/2	1 5/16-12	1.47	1.48
259-2023-20-20	1.25	1 1/4-11 1/2	1 5/8-12	1.59	1.67
259-2023-24-24	1.50	1 1/2-11 1/2	1 7/8-12	1.78	1.77



BULKHEAD W/JAM NUT

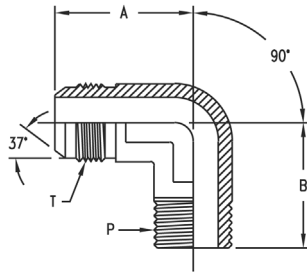
Part Number	Tube O.D.	Thread T	Thread P	A
259-2240-4-4	.25	7/16-20	1/4-18	2.03
259-2240-4-6	.38	9/16-18	1/4-18	2.12
259-2240-6-8	.50	3/4-16	3/8-18	2.36
259-2240-12-12	.75	1 1/16-12	3/4-14	2.92
259-2240-16-16	1.00	1 5/16-12	1 1/2-11	3.11



FEMALE CONNECTOR

Part Number	Tube O.D.	Thread P	Thread T	A
259-2022-4-4	.25	1/4-18	7/16-20	1.39
259-2022-6-6	.38	3/8-18	9/16-18	1.46
259-2022-6-8	.50	3/8-18	3/4-16	1.56
259-2022-8-8	.50	1/2-14	3/4-16	1.79
259-2022-12-12	.75	3/4-14	1 1/16-12	2.06
259-2022-16-16	1.00	1-11 1/2	1 5/16-12	2.35
259-2022-20-20	1.25	1 1/4-11 1/2	1 5/8-12	2.49
259-2022-24-24	1.50	1 1/2-11 1/2	1 7/8-12	2.62

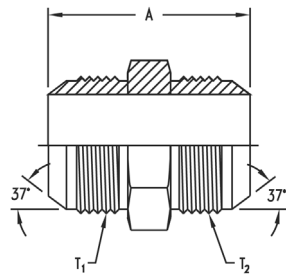
**Pipe NPTF to
SAE 37 Degree Flare
(cont.)**



90 DEGREE MALE ELBOW

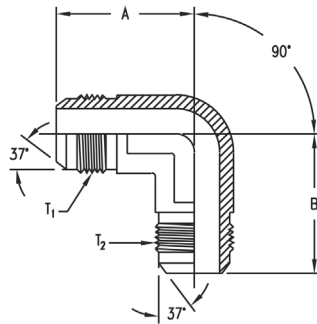
Part Number	Tube O.D.	Thread P	Thread T	A	B
259-2024-4-4	.25	1/4-18	7/16-20	1.05	1.09
259-2024-4-6	.38	1/4-18	9/16-18	1.06	1.09
259-2024-6-6	.38	3/8-18	9/16-18	1.14	1.22
259-2024-6-8	.50	3/8-18	3/4-16	1.25	1.22
259-2024-8-8	.50	1/2-14	3/4-16	1.33	1.47
259-2024-12-12	.75	3/4-14	1 1/16-12	1.66	1.59
259-2024-16-16	1.00	1-11 1/2	1 5/16-12	1.81	1.97
259-2024-16-20	1.25	1-11 1/2	1 5/8-12	2.06	2.35
259-2024-20-20	1.25	1 1/4-11 1/2	1 5/8-12	2.06	2.38
259-2024-24-24	1.50	1 1/2-11 1/2	1 7/8-12	2.33	2.64

**SAE 37 Degree Flare
Union**



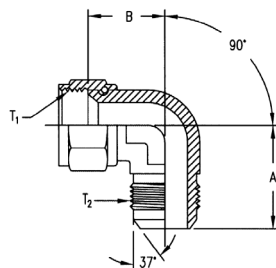
UNION

Part Number	Tube O.D.	Thread T1	Thread T2	A
259-2027-4-4	.25	7/16-20	7/16-20	1.37
259-2027-6-4	.25	9/16-18	7/16-20	1.40
259-2027-6-6	.38	9/16-18	9/16-18	1.41
259-2027-8-6	.38	3/4-16	9/16-18	1.52
259-2027-8-8	.50	3/4-16	3/4-16	1.62
259-2027-12-12	.75	1 1/16-12	1 1/16-12	2.16
259-2027-16-16	1.00	1 5/16-12	1 5/16-12	2.25
259-2027-20-20	1.25	1 5/8-12	1 5/8-12	2.43
259-2027-24-24	1.50	1 7/8-12	1 7/8-12	2.75



90 DEGREE UNION ELBOW

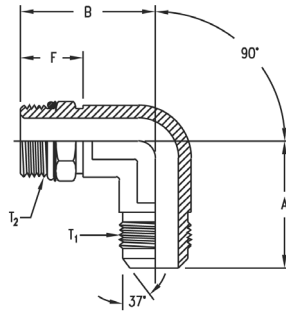
Part Number	Tube O.D.	Thread T1	Thread T2	A	B
259-2039-4-4	.25	7/16-20	7/16-20	.89	.89
259-2039-6-6	.38	9/16-18	9/16-18	1.06	1.06
259-2039-8-8	.50	3/4-16	3/4-16	1.25	1.25
259-2039-12-12	.75	1 1/16-12	1 1/16-12	1.66	1.66
259-2039-16-16	1.00	1 5/16-12	1 5/16-12	1.81	1.81
259-2039-20-20	1.25	1 5/8-12	1 5/8-12	2.06	2.06
259-2039-24-24	1.50	1 7/8-12	1 7/8-12	2.33	2.33



90 DEGREE SWIVEL ELBOW

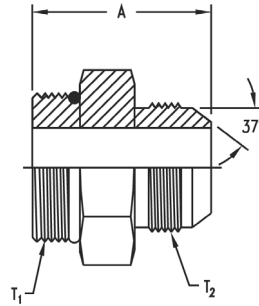
Part Number	Tube O.D.	Thread T1	Thread T2	A	B
259-2071-4-4	.25	7/16-20	7/16-20	.89	.66
259-2071-6-6	.38	9/16-18	9/16-18	1.06	.88
259-2071-8-8	.50	3/4-16	3/4-16	1.25	.96
259-2071-10-10	.63	7/8-14	7/8-14	1.45	1.12
259-2071-12-12	.75	1 1/16-12	1 1/16-12	1.66	1.19
259-2071-16-16	1.00	1 5/16-12	1 5/16-12	1.81	1.41
259-2071-20-20	1.25	1 5/8-12	1 5/8-12	2.06	1.68
259-2071-24-24	1.50	1 7/8-12	1 7/8-12	2.33	1.86

**O-Ring Boss to
SAE 37 Degree Flare**



90 DEGREE STRAIGHT THREAD ELBOW

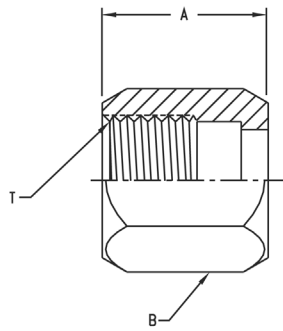
Part Number	Tube O.D.	Thread T1	Thread T2	A	B
259-2062-4-4	.25	7/16-20	7/16-20	.89	1.03
259-2062-4-6	.38	9/16-18	7/16-20	1.06	1.19
259-2062-6-4	.25	7/16-20	9/16-18	1.05	1.25
259-2062-6-6	.38	9/16-18	9/16-18	1.06	1.25
259-2062-6-8	.50	3/4-16	9/16-18	1.25	1.32
259-2062-8-6	.38	9/16-18	3/4-16	1.14	1.45
259-2062-8-8	.50	3/4-16	3/4-16	1.25	1.45
259-2062-12-12	.75	1 1/16-12	1 1/16-12	1.66	1.94
259-2062-12-16	1.00	1 5/16-12	1 1/16-12	1.76	2.05
259-2062-16-12	.75	1 1/16-12	1 5/16-12	1.81	2.05
259-2062-16-16	1.00	1 5/16-12	1 5/16-12	1.81	2.05
259-2062-16-20	1.25	1 5/8-12	1 5/16-12	2.01	2.25
259-2062-20-16	1.00	1 5/16-12	1 5/8-12	2.06	2.23
259-2062-20-20	1.25	1 5/8-12	1 5/8-12	2.06	2.25
259-2062-20-24	1.50	1 7/8-12	1 5/8-12	2.20	2.39
259-2062-24-24	1.50	1 7/8-12	1 7/8-12	2.33	2.39



STRAIGHT THREAD, SHORT CONNECTOR

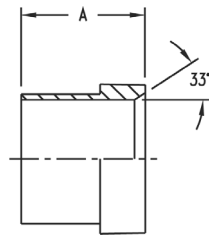
Part Number	Tube O.D.	Thread T1	Thread T2	A
259-202702-4-4	.25	7/16-20	7/16-20	1.23
259-202702-4-6	.38	7/16-20	9/16-18	1.27
259-202702-6-4	.25	9/16-18	7/16-20	1.29
259-202702-6-6	.38	9/16-18	9/16-18	1.30
259-202702-6-8	.50	9/16-18	3/4-16	1.44
259-202702-8-6	.38	3/4-16	9/16-18	1.38
259-202702-8-8	.50	3/4-16	3/4-16	1.48
259-202702-12-8	.50	1 1/16-12	3/4-16	1.76
259-202702-12-12	.75	1 1/16-12	1 1/16-12	1.97
259-202702-12-16	1.00	1 1/16-12	1 5/16-12	2.04
259-202702-16-12	.75	1 5/16-12	1 1/16-12	1.99
259-202702-16-16	1.00	1 5/16-12	1 5/16-12	2.04
259-202702-16-20	1.25	1 5/16-12	1 5/8-12	2.33
259-202702-20-16	1.00	1 5/8-12	1 5/16-12	2.12
259-202702-20-20	1.25	1 5/8-12	1 5/8-12	2.17
259-202702-20-24	1.50	1 5/8-12	1 7/8-12	2.53
259-202702-24-20	1.25	1 7/8-12	1 5/8-12	2.24
259-202702-24-24	1.50	1 7/8-12	1 7/8-12	2.37

SAE 37 Degree Flare Nuts and Sleeves



NUTS

Part Number	Tube O.D.	Thread T	A	B
259-1290-4	.25	7/16-20	.62	.56
259-1290-6	.38	9/16-18	.72	.69
259-1290-8	.50	3/4-16	.84	.88
259-1290-10	.63	7/8-14	.97	1.00
259-1290-12	.75	1 1/16-12	1.02	1.25
259-1290-16	1.00	1 5/16-12	1.12	1.50
259-1290-20	1.25	1 5/8-12	1.22	2.00
259-1290-24	1.50	1 7/8-12	1.41	2.25



SLEEVES

Part Number	Tube O.D.	A
259-900605-4	.25	.41
259-900605-6	.38	.50
259-900605-8	.50	.56
259-900605-10	.63	.66
259-900605-12	.75	.69
259-900605-16	1.00	.78
259-900605-20	1.25	.91
259-900605-24	1.50	1.12

Eaton
14615 Lone Oak Road
Eden Prairie, MN 55344
USA
Tel: 952 937-9800
Fax: 952 974-7722
www.hydraulics.aeroquip.com

Eaton
20 Rosamond Road
Footscray
Victoria 3011
Australia
Tel: (61) 3 9319 8222
Fax: (61) 3 9318 5714

Eaton
46 New Lane, Havant
Hampshire PO9 2NB
England
Tel: (44) 23 92 486 451
Fax: (44) 23 92 487 110



Aeroquip

© 2002 Eaton Corporation
All Rights Reserved
Printed in USA
Document No. A-LA-MC-0001-E
October 2002 2M