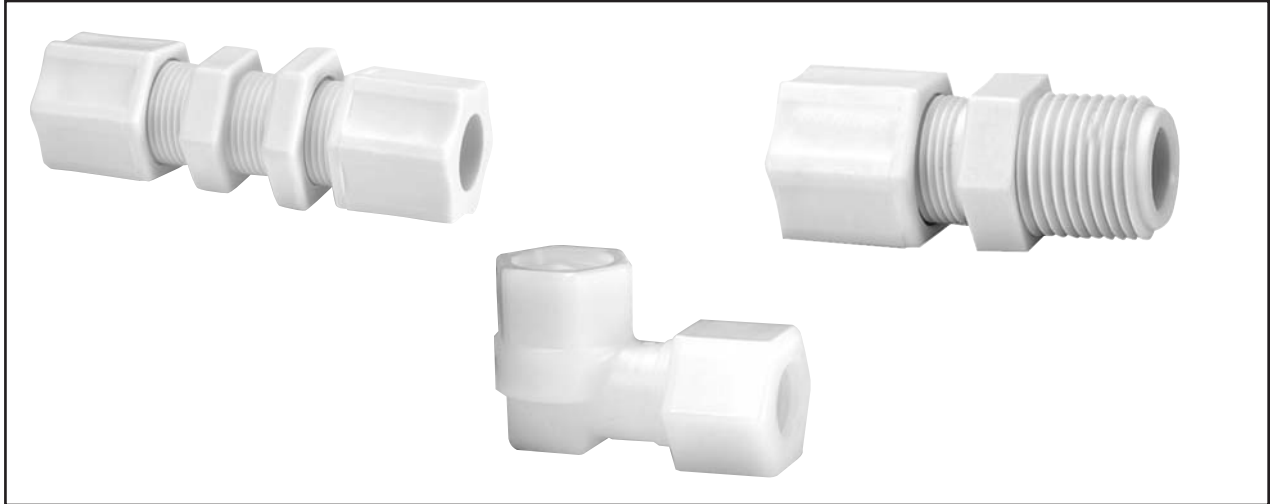


 Refer to safety information regarding tubing selection on page 1.



Weatherhead Molded Compression Tube Fittings

Sizes: Available in sizes 1/8" through 3/4" tube OD (7/8" tube OD and metric tube sizes available on request from Weatherhead Customer Satisfaction at 1-800-432-6006.)

Materials: Molded as standard in two materials: nylon and polypropylene

Nylon characteristics:

- good resistance to organic solvents, oils, and gasoline
- excellent impact resistance
- tolerant to repeated steam for wash down and longtime weathering
- F.D.A. and N.S.F. listed
- operating temperatures -40°F to 200°F (-40°C to 93°C) – not to exceed temperature specification of tubing

Polypropylene characteristics:

- good chemical and corrosion resistance
- opaque
- 20% glass filled
- N.S.F. listed
- operating temperatures -30°F to 200°F (-34°C to 93°C) – not to exceed temperature specification of tubing

Available on request in two materials: Celcon®* (acetal copolymer) or KYNAR®** (polyvinylidene fluoride)

Styles: Available in two standard styles:

Ferrule Nut (integral nut and sleeve for soft tubing to 50 PSI[♦])

- features ferrule and nut molded as a single part, eliminating the need for a two-piece assembly

Gripper Nut with separate plastic sleeve (for sure-grip with plastic tubing up to 220 PSI[♦])

- for higher pressure applications

Features and Benefits:

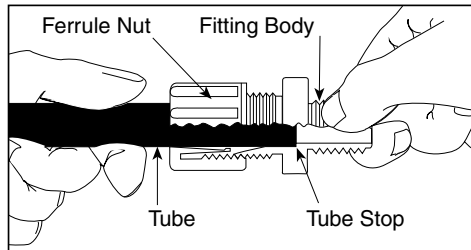
- leak-free performance
- high integrity in both mechanical and acoustical vibrations
- ten styles and over 400 part number configurations to meet your needs
- easy fitting assembly – no special tools or tube preparation necessary
- reliability in side-loaded applications allows for compact plumbing
- fittings are manufactured for use with PT200, PT240, and TP160 Boston Weatherhead plastic tubing
- fittings come fully assembled – for your convenience
- very low resistance to media flow resulting from material and internal surfaces
- no metal parts to corrode or present a safety hazard with aggressive chemicals
- ISO 9001 Certified

* Celcon® is a registered trademark of Ticona.

** KYNAR® is a registered trademark of Elf Atochem North America, Inc.

[♦] Operating temperatures of Weatherhead Tube Fittings are regulated by ambient and fluid temperatures, type of fluid being carried, tubing type and conditions of mechanical abuse. Pressures in excess of above specifications in all fitting sizes should be tested by the customer in the particular application. **129**

Molded Compression Tube Fittings Assembly Instructions



Maximum Operating Pressure:

Ferrule Nut series = 50 PSI max

Gripper Nut series = 220 PSI max

Maximum operating pressures are dictated by the combination of tubing and fitting. The lowest pressure of the individual components will decide the actual operating pressure of the assembly.

Temperature Range:

Nylon = -40°F to +200°F (-40°C to +93°C)

Polypropylene = -30°F to +200°F (-34°C to +93°C)

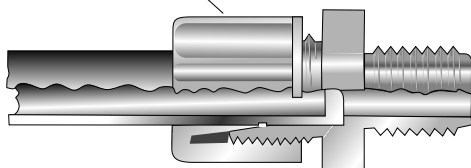
Ranges are at maximum operating pressures (refer to tubing temperature range). The overlap of temperature ranges of the individual components will decide the actual temperature range of the assembly.

Used with:

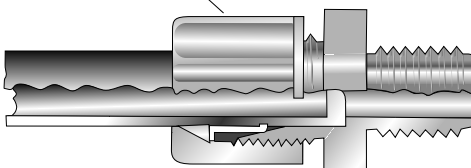
Weatherhead plastic tubing: TP160, PT200, and PT240.

Tube inserts are recommended for optimal performance with Weatherhead PT200 tubing.

FERRULE NUT
WITH INTEGRAL SLEEVE
LOW PRESSURE APPLICATIONS
SOFT PLASTIC TUBING
*50 P.S.I.



WITH PLASTIC GRIPPER
FOR USE WITH PLASTIC TUBING
FOR SURE GRIP
*220 P.S.I.



Assembly Instructions:

- Cut tubing to desired length; be sure the tube end is cut properly (maximum 10° cutting angle allowed).
- Insert the tubing through the back of the nut all the way through the nut assembly to the tube stop in the fitting body (see illustration). If the tubing does not enter the nut easily, loosen the nut one turn and then insert the tubing all the way to the tube stop in the fitting body.
- Turn the nut to hand-tight.
- Tighten the nut an additional 2 to 2-1/2 turns past hand-tight or until the nut bottoms against the fitting body, whichever comes first.
- All nuts must be retightened when the system reaches projected operating temperature.

Ordering Information

Molded compression tube fittings are available in nylon and in polypropylene. They are also available by special order in KYNAR®** (polyvinylidene fluoride) or Celcon®* (acetal copolymer). To order fittings in KYNAR® or Celcon®, call Weatherhead Customer Satisfaction at 1-800-432-6006. Refer to Chemical Resistance Chart, pages 28-32. For detailed information on chemical compatibility, call Weatherhead Technical Support at 1-800-776-3262. General material characteristics are as follows:

Nylon, F.D.A. and N.S.F. listed, has good resistance to organic solvents, oils and gasoline. Good strength at high temperatures. Cold and hot-water applications. Longtime weathering resistance. Good impact resistance, both single and repeated. Not recommended for use with bleach, acids, or chlorine.

Polypropylene, N.S.F. listed, has good chemical resistance. Withstands continuous temperatures up to 215°F (not to exceed temperature specification of tubing). Unaffected by most weak acids, alkalies, alcohols and ketones. Do not use with oxidants or strong acids or in continuous sunlight. 20% glass filled for improved stiffness.

KYNAR®, an F.D.A. and N.S.F. listed polyvinylidene fluoride, has outstanding chemical resistance for handling highly corrosive fluids.

Celcon®, an acetal copolymer, N.S.F. listed and U.S.D.A. and F.D.A. listed for coffee, milk and antibiotics, has high tensile strength and good impact resistance over a broad temperature range. Translucent white color. Not affected by continuous hot-water service and works smoothly with metal tubing. Celcon® cannot be recommended for continuous exposure to solutions with a chlorine concentration greater than 1 ppm. Suggested maximum continuous-use temperature is 220°F in air and 180°F in water (not to exceed temperature specification of tubing). Unaffected by most inorganics, except sulfuric, nitric and hydrochloric acids. Should not be continuously exposed to sunlight.

Most fittings can be ordered with a GRIPPER style nut. Fittings with a GRIPPER style nut are capable of handling greater pressure than those with standard style nut. See page 131. For ordering fittings with 'GRIPPER' nut, add 'G' to the end of the part number (example: 1568x4x4G or 1568Px4x4G). Some fittings are NOT available with the GRIPPER style nut, while others are ONLY available with the GRIPPER style nut, as noted on page 133-134. For more information, call Weatherhead Technical Support at 1-800-776-3262.

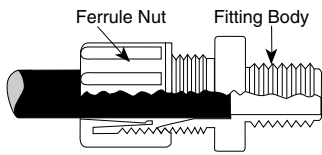
NOTE: It is not necessary to disassemble the fitting for assembly. Merely insert tubing to stop and tighten compression nut.

* Celcon® is a registered trademark of Ticona.

** KYNAR® is a registered trademark of Elf Atochem North America, Inc.

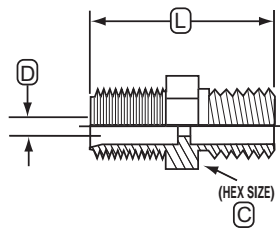
Molded Compression Tube Fittings

Plastic Fittings



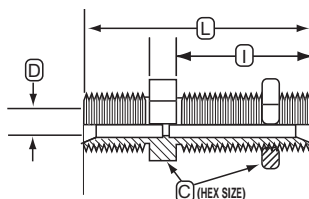
Tube O.D.	1/8 (.125)	1/4 (.250)	5/16 (.312)	3/8 (.375)	1/2 (.500)	5/8 (.625)	3/4 (.750)
Tube Thread Size	5/16-24	7/16-20	1/2-20	5/8-20	3/4-20	7/8-20	1-1/16-20

Male Connector



Tube O.D.	Pipe Thread	Male		L	D	Hex C
		Catalog Number Nylon	Catalog Number Polypropylene			
1/8	1/8	1568x2•	1568Px2•	.88	.13	7/16
1/4	1/8	1568x4	1568Px4	.99	.26	5/8
1/4	1/8	1568x4G	1568Px4G	.99	.26	5/8
1/4	1/4	1568x4x4	1568Px4x4	1.17	.26	5/8
1/4	1/4	1568x4x4G	1568Px4x4G	1.17	.26	5/8
1/4	3/8	1568x4x6G [■]	1568Px4x6	1.20	.26	13/16
5/16	1/8	1568x5	1568Px5	1.00	.32	11/16
5/16	1/8	1568x5G	1568Px5G	1.00	.32	11/16
5/16	1/4	1568x5x4	1568Px5x4	1.19	.32	11/16
5/16	1/4	1568x5x4G	1568Px5x4G	1.19	.32	11/16
3/8	1/8	1568x6x2	1568Px6x2	1.14	.38	13/16
3/8	1/8	1568x6x2G	1568Px6x2G	1.14	.38	13/16
3/8	1/4	1568x6	1568Px6	1.30	.38	13/16
3/8	1/4	1568x6G	1568Px6G	1.30	.38	13/16
3/8	3/8	1568x6x6	1568Px6x6	1.34	.38	13/16
3/8	3/8	1568x6x6G	1568Px6x6G	1.34	.38	13/16
3/8	1/2	1568x6x8	1568Px6x8	1.59	.38	59/64
3/8	1/2	1568x6x8G	1568Px6x8G	1.59	.38	59/64
1/2	1/8	1568x8x2G [■]	1568Px8x2G [■]	1.23	.51	15/16
1/2	1/4	1568x8x4	1568Px8x4	1.42	.51	15/16
1/2	1/4	1568x8x4G	1568Px8x4G	1.42	.51	15/16
1/2	3/8	1568x8	1568Px8	1.47	.51	15/16
1/2	3/8	1568x8G	1568Px8G	1.47	.51	15/16
1/2	1/2	1568x8x8	1568Px8x8	1.61	.51	15/16
5/8	3/8	1568x10x6G [■]	1568Px10x6G [■]	1.50	.63	1-1/16
5/8	1/2	1568x10G [■]	1568Px10G [■]	1.66	.63	1-1/16
3/4	3/4	1568x12x12G [■]	1568Px12x12G [■]	1.92	.76	1-5/16

Bulkhead Union



Tube O.D.	Catalog Number Nylon	Catalog Number Polypropylene	L	I	D	Hex C
1/4	1574x4	1574Px4	1.45	.88	.26	5/8
1/4	1574x4G	1574Px4G	1.45	.88	.26	5/8
5/16	1574x5	1574Px5	1.63	.98	.32	11/16
5/16	1574x5G	1574Px5G	1.63	.98	.32	11/16
3/8	1574x6	1574Px6	1.78	1.03	.38	13/16
3/8	1574x6G	1574Px6G	1.78	1.03	.38	13/16
1/2	1574x8	1574Px8	1.89	1.04	.51	15/16
1/2	1574x8G	1574Px8G	1.89	1.04	.51	15/16
3/4	1574x12G [■]	1574Px12G [■]	2.41	1.35	.76	1-5/16

• Not available with GRIPPER style nut ■ Sold ONLY with GRIPPER style nut

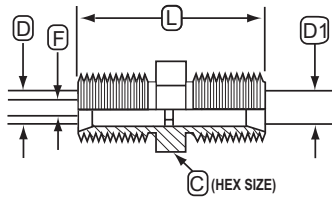
To order with 'GRIPPER' nut, add 'G' to the end of the part # (Except where noted!) Example: 1568x4x4G or 1568Px4x4G

131

WEATHERHEAD®

PLASTIC

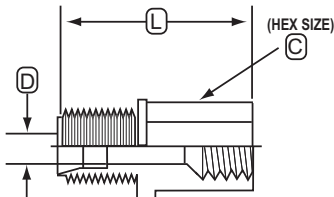
Union Connector



Tube O.D.	Catalog Number Nylon	Catalog Number Polypropylene	L	F	Hex C
1/4	1562x4	1562Px4	.98	.23	5/8
1/4	1562x4G	1562Px4G	.98	.23	5/8
5/16	1562x5	1562Px5	1.03	.28	11/16
5/16	1562x5G	1562Px5G	1.03	.28	11/16
3/8	1562x6	1562Px6	1.23	.30	13/16
3/8	1562x6G	1562Px6G	1.23	.30	13/16
1/2	1562x8	1562Px8	1.44	.48	15/16
1/2	1562x8G	1562Px8G	1.44	.48	15/16
5/8	1562x10G [†]	1562Px10G [†]	1.50	.50	1-1/16
3/4	1562x12G [†]	1562Px12G [†]	1.75	.64	1-5/16

Tube O.D.	Tube O.D.	Catalog Number Nylon	Catalog Number Polypropylene	L	D	Hex C	D1
1/4	1/8	1562x4x2•	1562Px4x2•	.92	.26	5/8	.13
5/16	1/4	1562x5x4•	1562Px5x4G [†]	1.00	.32	11/16	.26
3/8	1/4	1562x6x4	1562Px6x4	1.19	.38	13/16	.26
3/8	1/4	1562x6x4G	1562Px6x4G	1.19	.38	13/16	.26
1/2	3/8	1562x8x6	1562Px8x6	1.33	.51	15/16	.38
1/2	3/8	1562x8x6G	1562Px8x6G	1.33	.51	15/16	.38
5/8	3/8	1562x10x6G [†]	1562Px10x6G [†]	1.34	.63	1-1/16	.38
5/8	1/2	1562x10x8G [†]	1562Px10x8G [†]	1.47	.63	1-1/16	.51

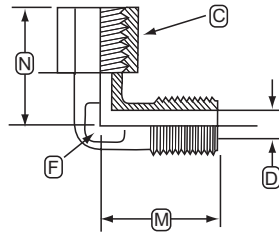
Female Connector



Tube O.D.	Female Pipe Thread	Catalog Number Nylon	Catalog Number Polypropylene	L	D	Hex C
1/4	1/8	1566x4	1566Px4	.92	.23	9/16
1/4	1/8	1566x4G	1566Px4G	.92	.23	9/16
1/4	1/4	1566x4x4	1566Px4x4	1.09	.22	11/16
1/4	1/4	1566x4x4G	1566Px4x4G	1.09	.22	11/16
5/16	1/4	1566x5x4	1566Px5x4	1.22	.28	11/16
5/16	1/4	1566x5x4G	1566Px5x4G	1.22	.28	11/16
3/8	1/4	1566x6	1566Px6	1.20	.36	11/16
3/8	1/4	N/A	1566Px6G	1.20	.36	11/16
3/8	3/8	1566x6x6	1566Px6x6	1.20	.36	13/16
3/8	3/8	1566x6x6G	1566Px6x6G	1.20	.36	13/16
3/8	1/2	1566x6x8	1566Px6x8	1.27	.34	1-3/64
3/8	1/2	1566x6x8G	1566Px6x8G	1.27	.34	1-3/64
1/2	3/8	1566x8	1566Px8	1.23	.47	13/16
1/2	3/8	1566x8G	1566Px8G	1.23	.47	13/16
1/2	1/2	1566x8x8	1566Px8x8	1.30	.48	15/16
1/2	1/2	1566x8x8G	1566Px8x8G	1.30	.48	15/16
5/8	1/2	1566x10G [†]	1566Px10G [†]	1.50	.52	1-1/16

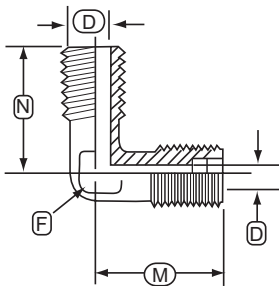
[†]Sold ONLY with GRIPPER style nut

Female Elbow



Female		Catalog Number Nylon	Catalog Number Polypropylene	M	N	D	Hex C	Across Flats F
Tube O.D.	Pipe Thread							
1/4	1/8	1570x4	1570Px4	.81	.75	.26	35/64	25/64
1/4	1/8	N/A	1570Px4G	.81	.75	.26	35/64	25/64
1/4	1/4	1570x4x4	1570Px4x4	.81	.97	.26	11/16	13/32
1/4	1/4	N/A	1570Px4x4	.81	.97	.26	11/16	13/32
5/16	1/4	1570x5x4G [■]	1570Px5x4G [■]	.94	1.00	.32	11/16	7/16
3/8	1/4	1570x6	1570Px6	.94	1.02	.38	51/64	37/64
3/8	1/4	N/A	1570Px6G	.94	1.02	.38	51/64	37/64
3/8	3/8	1570x6x6	1570Px6x6	.91	1.03	.38	13/16	9/16
3/8	3/8	N/A	1570Px6x6G	.91	1.03	.38	13/16	9/16
1/2	3/8	1570x8	1570Px8	1.09	1.13	.51	51/64	23/32
1/2	3/8	N/A	1570Px8G	1.09	1.13	.51	51/64	23/32
1/2	1/2	1570x8x8	1570Px8x8	1.09	1.34	.51	15/16	23/32
1/2	1/2	N/A	1570Px8x8G	1.09	1.34	.51	15/16	23/32
5/8	1/2	N/A	1570Px10G [■]	1.38	1.06	.63	1-1/16	53/64

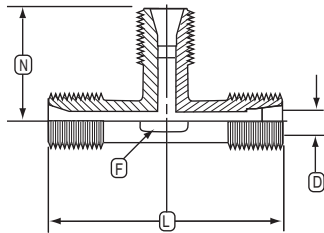
Male Elbow



Male		Catalog Number Nylon	Catalog Number Polypropylene	M	N	D	D1	Across Flats F
Tube O.D.	Pipe Thread							
1/8	1/8	1569x2•	1569Px2•	.56	.63	.11	.20	1/4
1/4	1/8	1569x4	1569Px4	.81	.81	.22	.25	3/8
1/4	1/8	1569x4G	1569Px4G	.81	.81	.22	.25	3/8
1/4	1/4	1569x4x4	1569Px4x4	.81	1.02	.22	.28	3/8
1/4	1/4	1569x4x4G	1569Px4x4G	.81	1.02	.22	.28	3/8
1/4	3/8	1569x4x6	1569Px4x6	.84	1.09	.23	.38	9/16
1/4	3/8	1569x4x6G	1569Px4x6G	.84	1.09	.23	.38	9/16
5/16	1/8	1569x5	1569Px5	.89	.906	.30	.25	7/16
5/16	1/8	1569x5G	1569Px5G	.89	.906	.30	.25	7/16
5/16	1/4	1569x5x4	1569Px5x4	.91	1.08	.25	.23	7/16
5/16	1/4	1569x5x4G	1569Px5x4G	.91	1.08	.25	.23	7/16
3/8	1/4	1569x6	1569Px6	.94	1.03	.30	.31	37/64
3/8	1/4	1569x6G	1569Px6G	.94	1.03	.30	.31	37/64
3/8	3/8	1569x6x6	1569Px6x6	.94	1.09	.34	.38	9/16
3/8	3/8	1569x6x6G	1569Px6x6G	.94	1.09	.34	.38	9/16
1/2	1/4	1569x8x4G [■]	1569Px8x4G [■]	1.06	1.09	.39	.31	11/16
1/2	3/8	1569x8	1569Px8	1.09	1.13	.39	.31	11/16
1/2	3/8	1569x8G	1569Px8G	1.09	1.13	.39	.31	11/16
1/2	1/2	1569x8x8	1569Px8x8	1.09	1.28	.47	.36	11/16
1/2	1/2	1569x8x8G	1569Px8x8G	1.09	1.28	.47	.36	11/16
5/8	3/8	1569x10x6G [■]	1569Px10x6G [■]	1.25	1.25	.52	.38	27/32
5/8	1/2	1569x10G [■]	1569Px10G [■]	1.25	1.44	.52	.50	13/16

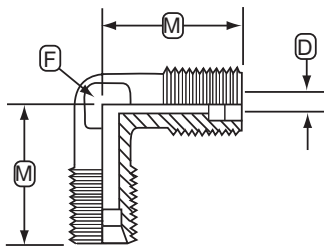
•Not available with GRIPPER style nut ■Sold ONLY with GRIPPER style nut

Union Tee



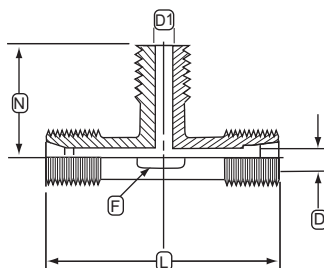
Tube O.D.	Catalog Number Nylon	Catalog Number Polypropylene	L	D	N	Across Flats F
1/8	1564x2•	1564Px2•	1.11	.11	.52	1/4
1/4	1564x4	1564Px4	1.44	.22	.72	23/64
1/4	1564x4G	1564Px4G	1.44	.22	.72	23/64
5/16	1564x5	1564Px5	1.61	.28	.83	7/16
5/16	1564x5G	1564Px5G	1.61	.28	.83	7/16
3/8	1564x6	1564Px6	1.91	.30	.97	17/32
3/8	1564x6G	1564Px6G	1.91	.30	.97	17/32
1/2	1564x8	1564Px8	2.13	.48	1.03	11/16
1/2	1564x8G	1564Px8G	2.13	.48	1.03	11/16
5/8	1564x10G [•]	1564Px10G [•]	2.56	.50	1.25	13/16
3/4	1564x12G [•]	1564Px12G [•]	3.11	.62	1.56	1-1/16
5/8-5/8-3/4	1564x10x10x6G [•]	1564Px10x10x6G [•]	2.53	.50	1.13	3/4

Union Elbow



Tube O.D.	Catalog Number Nylon	Catalog Number Polypropylene	M	D	Across Flats F
1/4	1565x4	1565Px4	.81	.22	3/8
1/4	1565x4G	1565Px4G	.81	.22	3/8
5/16	1565x5•	1565Px5G [•]	.91	.30	7/16
3/8	1565x6	1565Px6	.94	.34	9/16
3/8	1565x6G	1565Px6G	.94	.34	9/16
1/2	1565x8	1565Px8	1.06	.39	43/64
1/2	1565x8G	1565Px8G	1.06	.39	43/64
5/8	1565x10G [•]	1565Px10G [•]	1.25	.52	13/16

Male Branch Tee



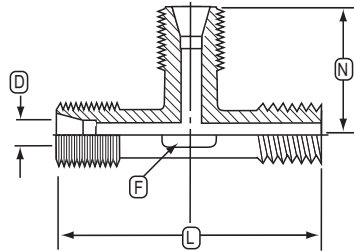
Tube O.D.	Male Pipe Thread	Catalog Number Nylon	Catalog Number Polypropylene	L	D	N	D1	Across Flats F
1/4	1/8	1572x4	1572Px4	1.45	.22	.75	.25	3/8
1/4	1/8	1572x4G	1572Px4G	1.45	.22	.75	.25	3/8
1/4	1/4	1572x4x4x4	1572Px4x4x4G [•]	1.45	.22	.92	.31	3/8
1/4	1/4	1572x4x4x4G	N/A	1.45	.22	.92	.31	3/8
5/16	1/4	1572x5x5x4G [•]	1572Px5x5x4	1.61	.30	.98	.31	27/64
5/16	1/4	N/A	1572Px5x5x4G	1.61	.30	.98	.31	27/64
3/8	1/4	1572x6	1572Px6	1.91	.36	1.06	.31	31/64
3/8	1/4	1572x6G	1572Px6G	1.91	.36	1.06	.31	31/64
3/8	3/8	1572x6x6x6	1572Px6x6x6	1.91	.36	1.11	.38	1/2
3/8	3/8	1572x6x6x6G	1572Px6x6x6G	1.91	.36	1.11	.38	1/2
1/2	3/8	1572x8	1572Px8	2.19	.48	1.16	.38	39/64
1/2	3/8	1572x8G	1572Px8G	2.19	.48	1.16	.38	39/64
1/2	1/2	1572x8x8x8	1572Px8x8x8	2.19	.48	1.31	.48	5/8
1/2	1/2	1572x8x8x8G	1572Px8x8x8G	2.19	.48	1.31	.48	5/8
5/8	1/2	N/A	1572Px10G [•]	2.52	.61	1.44	.47	51/64
3/4	1/2	N/A	1572Px12G [•]	3.09	.64	1.61	.56	1-3/64
3/4	3/4	N/A	1572Px12x12x12G [•]	3.09	.64	1.63	.69	1-3/64

•Not available with GRIPPER style nut •Sold ONLY with GRIPPER style nut

Molded Compression Tube Fittings

Plastic Fittings

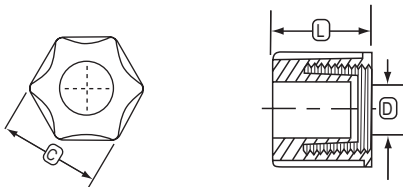
Male Run Tee



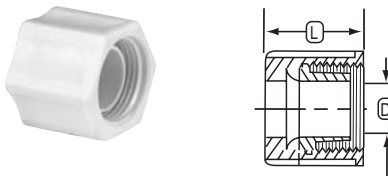
Tube O.D.	Male Pipe Thread	Catalog Number Nylon	Catalog Number Polypropylene	L	D	N	Across Flats F
1/4	1/8	1571x4	1571Px4	1.47	.22	.73	3/8
1/4	1/8	1571x4G	1571Px4G	1.47	.22	.73	3/8
1/4	1/4	1571x4x4x4	1571Px4x4x4	1.67	.22	.72	23/64
1/4	1/4	1571x4x4x4G	1571Px4x4x4G	1.67	.22	.72	23/64
5/16	1/4	1571x5x4x5G [†]	1571Px5x4x5	1.81	.28	.81	7/16
3/8	1/4	1571x6	1571Px6	1.98	.34	.95	31/64
3/8	1/4	1571x6G	1571Px6G	1.98	.34	.95	31/64
3/8	3/8	1571x6x6x6	1571Px6x6x6	2.03	.34	.97	1/2
3/8	3/8	1571x6x6x6G	1571Px6x6x6G	2.03	.34	.97	1/2
1/2	3/8	1571x8	1571Px8	2.27	.47	1.11	5/8
1/2	3/8	1571x8G	1571Px8G	2.27	.47	1.11	5/8
1/2	1/2	1571x8x8x8G [†]	1571Px8x8x8G [†]	2.41	.47	1.11	39/64
5/8	1/2	1571x10G [†]	1571Px10G [†]	2.72	.61	1.25	3/4
3/4	1/2	N/A	1571Px12G [†]	3.17	.64	1.55	1-1/16

Compression Nut

Ferrule Nuts with Integral Sleeve

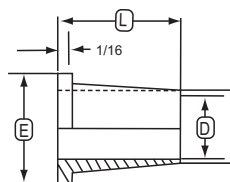


With Plastic Gripper



Tube O.D.	Catalog Number Nylon	Catalog Number Polypropylene	Hex C	L	D
1/8	1561x2	1561Px2	7/16	.52	.13
1/4	1561x4	1561Px4	5/8	.63	.26
5/16	1561x5	1561Px5	11/16	.69	.32
3/8	1561x6	1561Px6	13/16	.75	.38
1/2	1561x8	1561Px8	15/16	.88	.51
1/4	1561x4G	1561Px4G	5/8	.69	.26
5/16	1561x5G	1561Px5G	11/16	.75	.32
3/8	1561x6G	1561Px6G	13/16	.73	.38
1/2	1561x8G	1561Px8G	15/16	.88	.51
5/8	1561x10G	1561Px10G	1-1/8	.88	.63

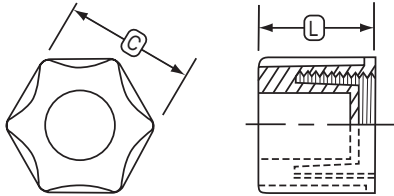
Insert



Tube O.D.	Catalog Number Nylon	Catalog Number Polypropylene	E	L	D
1/4	1584x4	1584Px4	.25	.38	.12
5/16	1584x5	1584Px5	.31	.40	.14
3/8	1584x6	1584Px6	.37	.50	.20
1/2	1584x8	1584Px8	.49	.56	.30

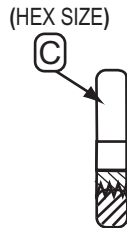
PLASTIC

Cap Nut



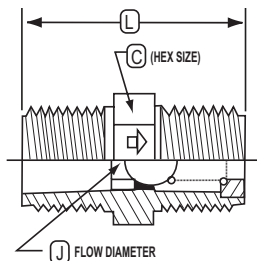
Tube O.D.	Catalog Number Nylon	Catalog Number Polypropylene	L	Hex C
1/8	1529x2	1529Px2	.52	7/16
1/4	1529x4	1529Px4	.63	5/8
5/16	1529x5	1529Px5	.70	45/64
3/8	1529x6	1529Px6	.73	13/16
1/2	1529x8	1529Px8	.88	15/16

Bulkhead Nut



Tube O.D.	Catalog Number Nylon	Catalog Number Polypropylene	Hex C
1/4	1502x4	1502Px4	5/8
5/16	1502x5	1502Px5	11/16
3/8	1502x6	1502Px6	13/16
1/2	1502x8	1502Px8	15/16
3/4	1502x12	1502Px12	1-5/16

KYNAR® Check Valve



Male Pipe Size N.P.T.F.	Catalog Number KYNAR Only	L	J	Hex C
1/8	1531x2	1.00	.09	7/16
1/4	1531x4	1.41	.19	5/8
3/8	1531x6	1.50	.25	13/16
1/2	1531x8	1.81	.34	15/16


KYNAR® Check Valve features and benefits:**

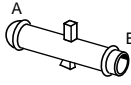
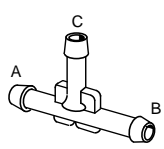
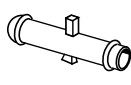
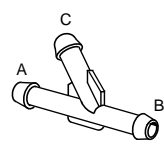
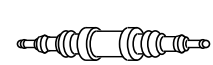
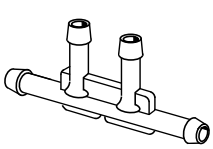
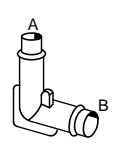
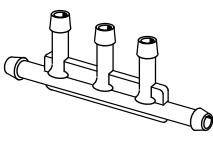
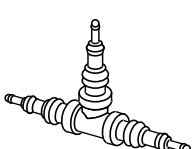
- Viton® "O" Ring
- Stainless Ball & Spring
- Zero Leakage
- Maximum Operating Temp. 180°F @ 220 PSI
 - Cracking Pressure 1 to 2.5 PSI

** KYNAR® is a registered trademark of Elf Atochem North America, Inc. Viton® is a registered trademark of DuPont Dow Elastomers

Plastic Fittings

Plastic Fittings

 Refer to safety information regarding tubing selection on page 1.

<p>Straight Connector</p> 	<table border="1"> <thead> <tr> <th>Tube I.D. A</th> <th>Tube I.D. B</th> <th>Catalog Number</th> </tr> </thead> <tbody> <tr><td>1/8</td><td>1/8</td><td>1911</td></tr> <tr><td>1/8</td><td>3/16</td><td>1923</td></tr> <tr><td>1/8</td><td>1/4</td><td>1924</td></tr> <tr><td>3/16</td><td>3/16</td><td>1912</td></tr> <tr><td>1/4</td><td>3/16</td><td>1914</td></tr> <tr><td>1/4</td><td>1/4</td><td>1913</td></tr> <tr><td>1/4</td><td>3/8</td><td>1915</td></tr> <tr><td>5/16</td><td>5/16</td><td>1925</td></tr> <tr><td>3/8</td><td>3/8</td><td>1927</td></tr> </tbody> </table>	Tube I.D. A	Tube I.D. B	Catalog Number	1/8	1/8	1911	1/8	3/16	1923	1/8	1/4	1924	3/16	3/16	1912	1/4	3/16	1914	1/4	1/4	1913	1/4	3/8	1915	5/16	5/16	1925	3/8	3/8	1927	<p>3 Way Tee</p>  <table border="1"> <thead> <tr> <th>Tube I.D. A</th> <th>Tube I.D. B</th> <th>Tube I.D. C</th> <th>Catalog Number</th> </tr> </thead> <tbody> <tr><td>1/8</td><td>1/8</td><td>1/8</td><td>1916</td></tr> <tr><td>1/8</td><td>1/8</td><td>3/16</td><td>1917</td></tr> <tr><td>1/8</td><td>1/8</td><td>1/4</td><td>1918</td></tr> <tr><td>1/8</td><td>3/16</td><td>1/8</td><td>1939</td></tr> <tr><td>3/16</td><td>1/8</td><td>3/16</td><td>1940</td></tr> <tr><td>3/16</td><td>3/16</td><td>3/16</td><td>1902</td></tr> <tr><td>3/16</td><td>3/16</td><td>1/8</td><td>1920</td></tr> <tr><td>3/16</td><td>3/16</td><td>1/4</td><td>1921</td></tr> <tr><td>1/4</td><td>3/16</td><td>3/16</td><td>1942</td></tr> <tr><td>1/4</td><td>1/4</td><td>1/4</td><td>1903</td></tr> <tr><td>1/4</td><td>1/4</td><td>3/16</td><td>1943</td></tr> <tr><td>5/16</td><td>5/16</td><td>5/16</td><td>1906</td></tr> <tr><td>3/8</td><td>3/16</td><td>3/8</td><td>1944</td></tr> <tr><td>3/8</td><td>1/4</td><td>3/8</td><td>1945</td></tr> <tr><td>3/8</td><td>5/16</td><td>3/8</td><td>1946</td></tr> <tr><td>3/8</td><td>3/8</td><td>3/16</td><td>1907</td></tr> <tr><td>3/8</td><td>3/8</td><td>1/4</td><td>1908</td></tr> <tr><td>3/8</td><td>3/8</td><td>3/8</td><td>1922</td></tr> </tbody> </table>	Tube I.D. A	Tube I.D. B	Tube I.D. C	Catalog Number	1/8	1/8	1/8	1916	1/8	1/8	3/16	1917	1/8	1/8	1/4	1918	1/8	3/16	1/8	1939	3/16	1/8	3/16	1940	3/16	3/16	3/16	1902	3/16	3/16	1/8	1920	3/16	3/16	1/4	1921	1/4	3/16	3/16	1942	1/4	1/4	1/4	1903	1/4	1/4	3/16	1943	5/16	5/16	5/16	1906	3/8	3/16	3/8	1944	3/8	1/4	3/8	1945	3/8	5/16	3/8	1946	3/8	3/8	3/16	1907	3/8	3/8	1/4	1908	3/8	3/8	3/8	1922
Tube I.D. A	Tube I.D. B	Catalog Number																																																																																																										
1/8	1/8	1911																																																																																																										
1/8	3/16	1923																																																																																																										
1/8	1/4	1924																																																																																																										
3/16	3/16	1912																																																																																																										
1/4	3/16	1914																																																																																																										
1/4	1/4	1913																																																																																																										
1/4	3/8	1915																																																																																																										
5/16	5/16	1925																																																																																																										
3/8	3/8	1927																																																																																																										
Tube I.D. A	Tube I.D. B	Tube I.D. C	Catalog Number																																																																																																									
1/8	1/8	1/8	1916																																																																																																									
1/8	1/8	3/16	1917																																																																																																									
1/8	1/8	1/4	1918																																																																																																									
1/8	3/16	1/8	1939																																																																																																									
3/16	1/8	3/16	1940																																																																																																									
3/16	3/16	3/16	1902																																																																																																									
3/16	3/16	1/8	1920																																																																																																									
3/16	3/16	1/4	1921																																																																																																									
1/4	3/16	3/16	1942																																																																																																									
1/4	1/4	1/4	1903																																																																																																									
1/4	1/4	3/16	1943																																																																																																									
5/16	5/16	5/16	1906																																																																																																									
3/8	3/16	3/8	1944																																																																																																									
3/8	1/4	3/8	1945																																																																																																									
3/8	5/16	3/8	1946																																																																																																									
3/8	3/8	3/16	1907																																																																																																									
3/8	3/8	1/4	1908																																																																																																									
3/8	3/8	3/8	1922																																																																																																									
<p>Restrictor Connector</p> 	<table border="1"> <thead> <tr> <th>Tube I.D. Size</th> <th>Catalog Number</th> </tr> </thead> <tbody> <tr> <td>3/16</td> <td>1950</td> </tr> </tbody> </table>	Tube I.D. Size	Catalog Number	3/16	1950	<p>Y Connector</p>  <table border="1"> <thead> <tr> <th>Tube I.D. A</th> <th>Tube I.D. B</th> <th>Tube I.D. C</th> <th>Catalog Number</th> </tr> </thead> <tbody> <tr><td>3/16</td><td>3/16</td><td>3/16</td><td>1932</td></tr> <tr><td>1/4</td><td>1/4</td><td>3/16</td><td>1933</td></tr> <tr><td>1/4</td><td>1/4</td><td>1/4</td><td>1935</td></tr> <tr><td>1/4</td><td>3/8</td><td>3/8</td><td>1936</td></tr> <tr><td>5/16</td><td>5/16</td><td>5/16</td><td>1937</td></tr> <tr><td>3/8</td><td>3/8</td><td>3/8</td><td>1938</td></tr> </tbody> </table>	Tube I.D. A	Tube I.D. B	Tube I.D. C	Catalog Number	3/16	3/16	3/16	1932	1/4	1/4	3/16	1933	1/4	1/4	1/4	1935	1/4	3/8	3/8	1936	5/16	5/16	5/16	1937	3/8	3/8	3/8	1938																																																																										
Tube I.D. Size	Catalog Number																																																																																																											
3/16	1950																																																																																																											
Tube I.D. A	Tube I.D. B	Tube I.D. C	Catalog Number																																																																																																									
3/16	3/16	3/16	1932																																																																																																									
1/4	1/4	3/16	1933																																																																																																									
1/4	1/4	1/4	1935																																																																																																									
1/4	3/8	3/8	1936																																																																																																									
5/16	5/16	5/16	1937																																																																																																									
3/8	3/8	3/8	1938																																																																																																									
<p>Universal Connector</p> 	<table border="1"> <thead> <tr> <th>Tube I.D. Size</th> <th>Catalog Number</th> </tr> </thead> <tbody> <tr> <td>5/32-1/4-3/8</td> <td>1901</td> </tr> </tbody> </table>	Tube I.D. Size	Catalog Number	5/32-1/4-3/8	1901	<p>4 Way Tee</p>  <table border="1"> <thead> <tr> <th>Tube I.D. All Ends</th> <th>Catalog Number</th> </tr> </thead> <tbody> <tr> <td>3/16</td> <td>1948</td> </tr> </tbody> </table>	Tube I.D. All Ends	Catalog Number	3/16	1948																																																																																																		
Tube I.D. Size	Catalog Number																																																																																																											
5/32-1/4-3/8	1901																																																																																																											
Tube I.D. All Ends	Catalog Number																																																																																																											
3/16	1948																																																																																																											
<p>Elbow Connector</p> 	<table border="1"> <thead> <tr> <th>Tube I.D. A</th> <th>Tube I.D. B</th> <th>Catalog Number</th> </tr> </thead> <tbody> <tr><td>1/8</td><td>3/16</td><td>1928</td></tr> <tr><td>3/16</td><td>3/16</td><td>1929</td></tr> <tr><td>3/16</td><td>1/4</td><td>1930</td></tr> <tr><td>1/4</td><td>1/4</td><td>1931</td></tr> </tbody> </table>	Tube I.D. A	Tube I.D. B	Catalog Number	1/8	3/16	1928	3/16	3/16	1929	3/16	1/4	1930	1/4	1/4	1931	<p>5 Way Tee</p>  <table border="1"> <thead> <tr> <th>Tube I.D. All Ends</th> <th>Catalog Number</th> </tr> </thead> <tbody> <tr> <td>3/16</td> <td>1949</td> </tr> </tbody> </table>	Tube I.D. All Ends	Catalog Number	3/16	1949																																																																																							
Tube I.D. A	Tube I.D. B	Catalog Number																																																																																																										
1/8	3/16	1928																																																																																																										
3/16	3/16	1929																																																																																																										
3/16	1/4	1930																																																																																																										
1/4	1/4	1931																																																																																																										
Tube I.D. All Ends	Catalog Number																																																																																																											
3/16	1949																																																																																																											
<p>Universal Tee</p> 	<table border="1"> <thead> <tr> <th>Tube I.D. Size</th> <th>Catalog Number</th> </tr> </thead> <tbody> <tr> <td>5/32-1/4-3/8</td> <td>1900</td> </tr> </tbody> </table>	Tube I.D. Size	Catalog Number	5/32-1/4-3/8	1900																																																																																																							
Tube I.D. Size	Catalog Number																																																																																																											
5/32-1/4-3/8	1900																																																																																																											

PLASTIC

Not recommended for fuel line applications. Temperature Range: -40°F to +350°F. Material: Nylon 6/6