

**ET1000 - Aeroquip Performance Products**

Portable, Light Duty, Positive Stop Crimp Machine

Innovation Sheet

Eaton is proud to add the ET1000 crimp machine to its line of portable crimp machines. While being our most economical crimp machine to-date, the new Performance ET1000 machine boasts a broad crimp capability with an ease-of-use that is sure to please hose assemblers.

This new crimp machine has been approved to crimp:

- Aeroquip AQP Racing & StartLite hose in sizes -4 through -16, straight through 120° swivel. The StartLite hose is also qualified in -20 swivel.
- Aeroquip Teflon Racing hose in -3, -4 and -6 sizes, straight through 90°.

The new ET1000 crimp machine builds on the success of Eaton portable crimp machines by using a 2-piece split half collet assembly in lieu of traditional one-piece die cages. The correct hose assembly crimp diameter is obtained by the use of a spacer ring that controls the stroke length of the cylinder during the crimping operation.

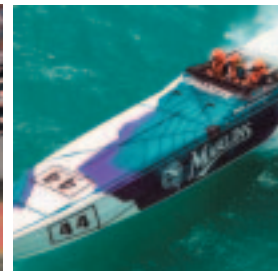
This new crimp machine may be ordered separately or with one of four power supplies: hand-pump, air/hydraulic pump, 12-volt DC power unit, or a 110-volt AC power unit (see Ordering Instructions on the reverse side).

**Features**

- Pusher slides out of position.
- Compatible with the Aeroquip Performance Product hose & fitting line.
- Can be mounted on service vehicles due to its portable design.
- Can be powered with virtually any 10,000 psi hydraulic power source.
- Utilizes 2-piece collet assemblies.
- Spacer rings control the crimp diameter.

**Benefits**

- Sliding pusher allows for easier fitting insertion into the machine.
- Simple positive-stop crimp diameter control system for consistent crimping time after time with no operator adjustments required.
- Easily transported between job sites.
- Versatile power source options.
- Electricity is required only when using an electric style pump.



**SPECIFICATIONS**

Dimensions	22" high, 16" wide, 14" in depth
Weight	70 lbs. (without pump)

**ET1000 CRIMP MACHINE PART NUMBERS**

ET1000-001	No pump, no tooling (basic machine only)
ET1000-002	Hand-pump, no tooling
ET1000-003	Air-hydraulic pump, no tooling
ET1000-004	110 volt 1/2HP electric pump, no tooling
ET1000-005	12 V DC pump, no tooling

\* All part numbers above include the base crimp machine.

**ET1000 CRIMP MACHINE PACKAGE PART NUMBERS**

These machine packaged part numbers offer a variety of pumps with the same tooling package including all collets and spacer rings to crimp:

- AQP Racing & StartLite Hoses (sizes -4 thru -16), straight through 120° swivel fittings.
- AQP StartLite has been qualified up to -20, straight through 120° swivel fittings.
- Aeroquip Teflon Racing Hoses (sizes -3, -4 and -6), straight fitting.

ET1000-011	No pump, but includes complete Collet and Spacer Ring Tooling package described above.
ET1000-012	2-Stage Hand pump, and complete Collet and Spacer Ring Tooling package described above.
ET1000-013	Air/Hydraulic pump, and complete Collet and Spacer Ring Tooling package described above.
ET1000-014	110 Volt Electric pump, and complete Collet and Spacer Ring Tooling package described above.
ET1000-015	12 Volt DC pump, and complete Collet and Spacer Ring Tooling package described above.

HOSE STYLE	HOSE END	COLLET ASSEMBLY	SPACER RING P/N	FLAT SIDE (UP/DOWN)	CRIMP DIAMETER RANGE (IN)		DIE RING ADAPTER REQUIRED
FBA0400	FW1390	T-400-2C	ET1010SR-M305A	FSU	0.488	0.498	Yes
FBU0400	FW1390	T-400-2C	ET1010SR-M305A	FSU	0.488	0.498	Yes
FBA0600	FW1390	ET1000DC-M150S	ET1010SR-M100A	FSU	0.609	0.619	Yes
FBU0600	FW1390	ET1000DC-M150S	ET1010SR-M100A	FSU	0.609	0.619	Yes
FBA0800	FW1390	T-400-3C	ET1010SR-M055A	FSU	0.715	0.725	Yes
FBU0800	FW1390	T-400-3C	ET1010SR-M055A	FSU	0.715	0.725	Yes
FBA1000	FW1390	ET1000DC-M195S	ET1010SR-M395D	FSU	0.891	0.901	Yes
FBU1000	FW1390	ET1000DC-M195S	ET1010SR-M395D	FSU	0.891	0.901	Yes
FBA1200	FW1390	ET1000DC-M230S	ET1010SR-M395D	FSU	1.015	1.025	Yes
FBU1200	FW1390	ET1000DC-M230S	ET1010SR-M395D	FSU	1.015	1.025	Yes
FBA1600	FW1390	T-400-5C	ET1010SR-M240D	FSU	1.200	1.210	Yes
FBU1600	FW1390	T-400-5C	ET1010SR-M240D	FSU	1.200	1.210	Yes
FBU2000	FC1817	T-400-6C	ET1010SR-M115D	FSU	1.460	1.470	Yes
FBC0300	FC3596	ET1000DC-M065S	ET1010SR-M205A	FSU	0.272	0.278	Yes
FBC0400	FC3596	ET1000DC-M065S	ET1010SR-M115D	FSU	0.334	0.340	Yes
FBC0600	FC3443	T-400-120C	ET1010SR-M055A	FSU	0.464	0.470	Yes

**COLLET PART NUMBERS**

T-400-2C	T-400-5C
T-400-3C	T-400-6C
T-400-120C	
ET1000DC-M065S	ET1000DC-M195S
ET1000DC-M150S	ET1000DC-M230S
ET1000AR-001(Die Ring Adapter)	

**SPACER RING PART NUMBERS**

ET1010SR-M305A	ET1010SR-M205A
ET1010SR-M100A	ET1010SR-M055A
ET1010SR-M115D	ET1010SR-M240D
ET1010SR-M395D	

**PUMP PART NUMBERS\***

ET1000PK-001	2-stage hand pump
ET1000PK-002	Air/hydraulic pump
ET1000PK-003	110 volt electric pump
ET1000PK-004	12 volt DC pump

\* These pump kits include the pump, connecting hose assembly, and all of the adapters necessary to connect to the ET1000 crimp machine cylinder.

**ACCESSORY PART NUMBERS**

140-06701	1.5 oz. Tube, high efficiency PTFE grease
-----------	---

**LOCATOR KIT**

ET1000LK-001	includes the knob, jam nut, a 3" set screw and a 4" set screw.
--------------	--

Eaton  
14615 Lone Oak Road  
Eden Prairie, MN 55344  
USA  
Tel: 952 937-9800  
Fax: 952 974-7722  
www.hydraulics.eaton.com

Eaton  
20 Rosamond Road  
Footscray  
Victoria 3011  
Australia  
Tel: (61) 3 9319 8222  
Fax: (61) 3 9318 5714

Eaton  
Dr.-Reckeweg-Str. 1  
D-76532 Baden-Baden  
Germany  
Tel: (49) 7221 682-0  
Fax: (49) 7221 682-788



© 2004 Eaton Corporation  
All Rights Reserved  
Printed in USA  
Document No. A-SPPE-MS004-E  
March 2004