

Hose Index

Alphabetical Index

DESCRIPTION	PAGES
A/C and Refrigeration Hose	17
AQP Hose	13-14
Hose	20-57
<i>Hydraulic</i>	<i>34-57</i>
AQP	35, 36, 39, 40, 41, 45, 48, 49, 50, 51
AQP/Hi-IMPULSE	39, 40, 48, 49
AQP/Hi-Pac	41
Double wire braid	42-49
Four spiral wire	49-53

DESCRIPTION	PAGES
Four or six spiral wire	54-56
HI-IMPULSE	38-40, 47-49
Hi-Pac	41
MatchMate BLUE	39, 48
MatchMate ICE	45
MatchMate Plus	39, 47, 48, 51
Single wire braid	38-42
Textile braid	21, 22, 32-37
Wire inserted suction	34, 35

DESCRIPTION	PAGES
<i>Special application</i>	<i>20-34</i>
Airbrake	21-23
AQP	23-25, 27, 33
Convuluted PTFE	31, 32
Engine and airbrake	23
EPDM	40, 49
Fuel and oil	23-27
Jack Hose	57
LPG	27, 28

DESCRIPTION	PAGES
Power steering	41
Railroad airbrake	22
Silicone rubber (coolant)	20
Silicone rubber (heater)	20
SOCKETLESS	32-34
PTFE	28-32
Textile braid low pressure	32-34, 35-37
How to order	12
PTFE Hose	18-19
Thermoplastic Hose	15-16

Part Number Index

PART #	PG.	PART #	PG.
302A	26	2575	32
303	26	2580	37
1503	26	2583	37
1531	22	2651	25
1531A	22	2661	35
2550	21	2681	38
2554	21	2766	45
2556	34	2781	47
2565	34	2807	28
2570	21	2808	30

PART #	PG.	PART #	PG.
CR170	28	FC273B	54
FC136	52	FC300	27
FC194	40	FC310	41
FC195	49	FC321	27
FC211	38	FC323	50
FC212	44	FC324	50
FC234	25	FC325	51
FC252	20	FC332	33
FC254	53	FC350	23
FC273	54	FC352	20

PART #	PG.	PART #	PG.
FC355	23	FC598	36
FC363	31	FC606	56
FC364	31	FC606B	56
FC465	29	FC611	40
FC466	35	FC619	34
FC469	30	FC629	21
FC498	36	FC636	49
FC510	41	FC639	42
FC563	32	FC647	33
FC579	57	FC650	24

PART #	PG.	PART #	PG.
FC659	52	GH120	45
FC693	46	GH194	39
FC699	24	GH195	48
FC735	46	GH466	55
FC736	53	GH493	51
FC807	29	GH506	55
FC829	22	GH663	39
FC839B	43	GH681	42
FC849	43	GH781	47
FC849B	44	GH793	48

Eaton's Aeroquip Hose and Fitting Assembly Product Warning

Flexible hose lines offer many advantages over rigid tubing including routing ease, vibration absorption, sound deafening and the ability to accommodate movement of connected components. However, hose lines require caution in use not only to provide long service, but also to guard against potentially dangerous failure.

Important

The user should carefully observe the precautions listed in this catalog, including the recommendations on the selection of hose and fittings on the relevant pages, and the pages on fluid compatibility. In addition, care should be taken not to exceed the minimum bend radius listed for each hose size and type in the hose section.

Maximum operating pressure should not exceed pressures listed in the hose data. Instructions for assembling fittings to different hose should be followed carefully to ensure the performance of the completed assembly.

WARNING Eaton fitting tolerances are engineered to match Eaton's Aeroquip hose tolerances. The use of Eaton fittings on hose supplied by other manufacturers and/or the use of Eaton's Aeroquip hose with fittings supplied by other manufactures may result in the production of unreliable and unsafe hose assemblies and is neither recommended nor authorized by Eaton Corporation or any of its affiliates or subsidiaries.

WARNING Application considerations must be observed in selecting appropriate components for the application of these products contained herein. The failure to follow the recommendations set forth in this catalog may result in an unstable application which may result in serious personal injury or property damage.

EATON CORPORATION OR ANY OF ITS AFFILIATES OR SUBSIDIARIES SHALL NOT BE SUBJECT TO AND DISCLAIMS ANY OBLIGATIONS OR LIABILITIES (INCLUDING BUT NOT LIMITED TO ALL CONSEQUENTIAL, INCIDENTAL AND CONTINGENT DAMAGES) ARISING FROM TORT CLAIMS (INCLUDING WITHOUT LIMITATION NEGLIGENCE AND STRICT LIABILITY) OR OTHER THEORIES OF LAW WITH RESPECT TO ANY HOSE ASSEMBLIES NOT PRO-

DUCTED FROM GENUINE AEROQUIP HOSE FITTINGS, HOSE AND AEROQUIP APPROVED EQUIPMENT, AND IN CONFORMANCE WITH EATON'S AEROQUIP PROCESS AND PRODUCT INSTRUCTIONS FOR EACH SPECIFIC HOSE ASSEMBLY.

Failure to follow these processes and product instructions and limitations could lead to premature hose assembly failures resulting in property damage, serious injury or death.

Routing

If the user follows the recommendations on hose line routing and installation as provide herein, improved safety and longer service life of any hose installation will result.

How to Order



SPECIALTY & TRUCK HOSE

LOW & MEDIUM PRESSURE HOSE

HIGH PRESSURE HOSE

HOSE FITTINGS

ADAPTERS & TUBE FITTINGS

ACCESSORIES & ASSEMBLY INSTRUCTIONS

HOSE ASSEMBLY EQUIPMENT

APPENDICES

Accurate processing and prompt delivery of your order depends on easy identification of your requirements. Please order Aeroquip brand parts using correct part numbers as described in this catalog. Inquiries and orders should be directed to your Aeroquip Distributor or:

Eaton Corporation
 14615 Lone Oak Road
 Eden Prairie, MN 55344
 USA
 952/937-9800;
 Fax: 952/974-7722
www.hydraulics.eaton.com

Part numbers and dash sizes

Dash size designates the nominal size in 16ths of an inch. This number immediately follows the part number and is separated from it with a dash.

Dimensions

Dimensions given in this catalog for Aeroquip products are approximate and should be used for reference only. Exact dimensional information for a given product is subject to change and varying tolerances; contact Eaton directly for full current information.

WARNING

Hose assemblies

Eaton manufactures the terminal ends of our hose fittings to the appropriate requirements established by the SAE. Therefore, the performance ratings of these hose fittings meet the SAE requirements. It is possible to order a hose assembly with a fitting terminal end that has a performance rating lower than the hose rating. When ordering hose assemblies, please keep the connecting end performance rating in mind since this may affect overall hose assembly performance.

Hose assembly components (hose and fittings) are easily assembled in the field. However, factory assembled reusable and crimped hose assemblies are available.

For complete information, contact Eaton.

Cut length hose

Cut lengths of hose should be ordered as shown below by specifying lengths in inches.

For numeric part numbers: 2651-10-00484
 Hose type _____
 Hose size (in 16ths of an inch) _____
 Cut length (in inches) _____
 last digit is in 1/8ths of an inch 00484 = 48 1/2 inches

For alpha-numeric part numbers: FC300-08-00484
 Hose type _____
 Hose dash size _____
 Cut length (in inches) _____
 last digit is in 1/8ths of an inch 00484 = 48 1/2 inches

Bulk hose

Bulk hose should be ordered by specifying length in feet as shown below.

Complete number 500 ft.-2651-10
 Quantity (in feet) _____
 Hose type _____
 Hose size (in 16ths of an inch) _____

Note: Length tolerance for hose, assemblies and sleeves is:

- Up to and including 12 inches: $\pm 1/8"$
- Above 12 inches to and including 18 inches: $\pm 3/16"$
- Above 18 inches to and including 36 inches: $\pm 1/4"$
- Above 36 inches: $\pm 1\%$ of length

AQP Hose

Refer to AQP Catalog A-HOAQ-MC001-E for more information on AQP hose.

FC300 AQP Hose



Exceeds SAE100R5

The superior high-temperature, abrasion-resistant hose. Features extensive fluid compatibility.

See page 27.

FC194 AQP/Hi-IMPULSE Hose



Exceeds SAE100R1A, EN853 1ST, ISO1436-1 TYPE 1ST

Combines superior high-temperature resistance and extensive fluid compatibility plus operating pressures up to 40% greater than SAE100R1 hose.

Aeroquip brand HI-IMPULSE hose construction is a patented process. Patent number 3,725,167.

See page 40.

FC195 AQP/Hi-IMPULSE Hose



Exceeds SAE100R2A, EN853 2ST, ISO1436-1 TYPE 2ST

Combines superior high temperature resistance and extensive fluid compatibility plus operating pressures up to 40% greater than SAE100R2 hose.

Aeroquip brand HI-IMPULSE hose construction is a patented process. Patent number 3,725,167.

See page 49.

FC510 AQP/Hi-Pac Hose



Exceeds SAE100R2 Performance Requirements

Combines the flexibility and economy of Hi-Pac hose with the temperature and fluid compatibility of AQP hose.

Aeroquip brand Hi-Pac hose construction is patented. Patent number 3,463,197.

See page 41.

FC323 AQP Hose



Uniform Pressure Spiral Wire Hose 210,0 BAR [3000 psi]

The features of AQP construction and spiral wire reinforcement are combined in this quality hose style.

See page 50.

FC324 AQP Hose



Uniform Pressure Spiral Wire Hose 280,0 BAR [4000 psi]

Features the patented AQP tube compound and 4-spiral wire reinforcement. Uses the same fittings as FC323.

See page 50.

FC325 AQP Hose



Uniform Pressure Spiral Wire Hose 350,0 BAR [5000 psi]

Features the patented AQP tube compound and 4-spiral wire reinforcement. Pressures to 350,0 BAR [5000 psi].

See page 51.

SPECIALTY & TRUCK HOSE

LOW & MEDIUM PRESSURE HOSE

HIGH PRESSURE HOSE

HOSE FITTINGS

ADAPTERS & TUBE FITTINGS

ACCESSORIES & ASSEMBLY INSTRUCTIONS

HOSE ASSEMBLY EQUIPMENT

APPENDICES

FC350 AQP Hose

Exceeds FMVSS-106 Type All

The revolutionary truck hose with superior abrasion resistance. Features an AQP tube for excellent fluid compatibility and temperature requirements.

See page 23.

FC355 AQP Hose

Exceeds FMVSS-106 Type All

Ideal for truck maintenance and piping conditions where fluid compatibility and chemical resistance are required.

Has a blue AQP elastomer cover for fluid resistance.

See page 23.

FC234 AQP Hose

Fire resistant fuel hose meets USCG AI requirements. Offers positive fire resistance in

critical applications without using a firesleeve.

See page 25.

FC332 AQP SOCKETLESS Hose

Offers extended fluid compatibility and operating temperature range for low pressure applications.

Used with Aeroquip brand SOCKETLESS fittings for quick and easy assembly.

See page 33.

FC498 AQP Hose

Exceeds SAE100R6

For low pressure applications.

See page 36.

2661 AQP Hose

Exceeds SAE100R4

The dual-purpose hose with extensive fluid compatibility is ideal for either suction or chemical transfer applications.

See page 35.

GH194 MatchMate BLUE AQP/HI-IMPULSE Hose

Exceeds SAE 100R1AT

A thin cover, 1-wire version of AQP/HI-IMPULSE hose that allows the use of Aeroquip MatchMate Plus Thru-The-Cover (TTC) fittings.

Pressures to 227,0 BAR [3250 psi].

See page 39.

GH195 MatchMate BLUE AQP/HI-IMPULSE Hose

Exceeds SAE 100R2AT

A thin cover, 2-wire version of AQP/HI-IMPULSE hose that allows the use of Aeroquip MatchMate Plus Thru-The-Cover (TTC) fittings.

Pressures to 397,0 BAR [5750 psi].

See page 48.

FC650 AQP Hose

High Temperature Fuel and Oil

The revolutionary truck hose with superior abrasion resistance. Features an AQP tube for excellent fluid compatibility and temperature requirements.

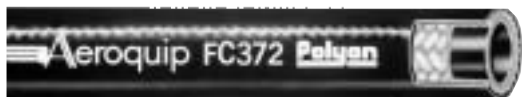
Pressure to 70,0 BAR [1000 psi].

See page 24.

Thermoplastic Hose

Refer to Everflex Catalog E-HOEV-MC001-E for more information on Thermoplastic hose.

FC372 Polyon™ Thermoplastic Hose



SAE100R7 - Medium Pressure

Premium hose with elastomer tube (Hytrel*), single braid polyester reinforcement, black polyurethane cover, and operating tem-

perature range of -54°C to +93°C [-65°F to 200°F].
For more information, refer to catalog E-HOEV-MC001-E.

FC373 Polyon Thermoplastic Hose

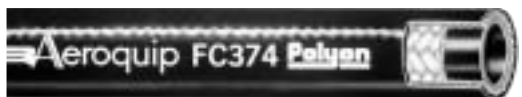


SAE100R7 - Medium Pressure - Non-Conductive

Premium hose with elastomer tube (Hytrel*), single braid polyester reinforcement, orange polyurethane cover and operating

temperature range of -54°C to +93°C [-65°F to 200°F].
For more information, refer to catalog E-HOEV-MC001-E.

FC374 Polyon Thermoplastic Hose

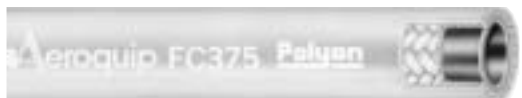


SAE100R8 - High Pressure

Premium hose with elastomer tube (Hytrel*), single braid aramid polyester reinforcement, black polyurethane cover and operating temperature

range of -54°C to +93°C [-65°F to 200°F].
For more information, refer to catalog E-HOEV-MC001-E.

FC375 Polyon Thermoplastic Hose



SAE100R8 - High Pressure - Non-Conductive

Premium hose with elastomer tube (Hytrel*), single braid aramid polyester reinforcement, orange polyurethane cover and operating temperature

range of -54°C to +93°C [-65°F to 200°F].
For more information, refer to catalog E-HOEV-MC001-E.

FC376 Polyon Thermoplastic Hose



Very high Pressure

Premium hose with elastomer tube (Hytrel*), single braid aramid polyester reinforcement, black polyurethane cover and operating temperature

range of -40°C to +66°C [-40°F to 150°F].
For more information, refer to catalog E-HOEV-MC001-E.

FC377 Polyon Thermoplastic Hose



Very high Pressure - Non-Conductive

Premium hose with elastomer tube (Hytrel*), single braid aramid polyester reinforcement, orange polyurethane cover and operating temperature

range of -40°C to +66°C [-40°F to 150°F].
For more information, refer to catalog E-HOEV-MC001-E.

FC390 Polyon Thermoplastic Hose



SAE100R7 - Medium Pressure with Flame Retardent Cover

Premium hose with elastomer tube (Hytrel*), double braid polyester reinforcement, black perforated flame retardent polyurethane cover and

operating temperature range of -54°C to +93°C [-65°F to 200°F].
For more information, refer to catalog E-HOEV-MC001-E.

*Hytrel is a registered trademark of E.I. DuPont.

FC690 Polyon Thermoplastic Hose

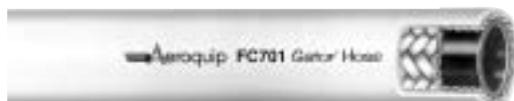


SAE100R7 - Medium Pressure - Low Temperature Flexing

Premium hose with elastomer tube (Hytrel*), double braid aramid reinforcement, black perforated polyurethane cover with operating temperature

range of -54°C to +93°C [-65°F to 200°F], and maximum flex life. For more information, refer to catalog E-HOEV-MC001-E.

FC701 Gator™ Hose



2,500 PSI Sewer Cleaning Hose

Blue polyethylene tube, single polyester braid reinforcement and orange ether-based polyurethane cover hose and maximum flexibility. Operating

temperature range of -40°C to +66°C [-40°F to +150°F]. For more information, refer to catalog E-HOEV-MC001-E.

FC702 Gator Hose



3,000 PSI Sewer Cleaning Hose

Blue polyethylene tube, single polyester braid reinforcement and blue ether-based polyurethane cover hose and maximum flexibility. Operating

temperature range of -40°C to +66°C [-40°F to +150°F]. For more information, refer to catalog E-HOEV-MC001-E.

FC727 Polyon Thermoplastic Hose



SAE100R7 - Medium Pressure

High quality thermoplastic hose with nylon tube, two polyester braid reinforcement, polyurethane cover, and operating temperature range of -40°C to +93°C [-40°F to 200°F].

For more information, refer to catalog A-HH-MB-0001-E.

FC901 Polyon Thermoplastic Twin-Line Hose



SAE100R7 - Medium Pressure - Non-Conductive

Two FC373 hoses welded together. Hose constructed of elastomer tube (Hytrel*), single braid polyester reinforcement, with orange polyurethane cover and operating temperature

range of -54°C to +93°C [-65°F to 200°F]. For more information, refer to catalog E-HOEV-MC001-E.

FC902 Polyon Thermoplastic Twin-Line Hose



SAE100R7 - Medium Pressure

Two FC372 hoses welded together. Hose constructed of elastomer tube (Hytrel*), single braid polyester reinforcement, with black polyurethane cover

and operating temperature range of -54°C to +93°C [-65°F to 200°F]. For more information, refer to catalog E-HOEV-MC001-E.

FC914 Polyon Thermoplastic Twin-Line Hose



SAE100R8 - High Pressure

Two FC374 hoses welded together. Hose constructed of elastomer tube (Hytrel*), single braid polyester reinforcement, with black polyurethane cover

and operating temperature range of -54°C to +93°C [-65°F to 200°F]. For more information, refer to catalog E-HOEV-MC001-E.

FC916 Thermoplastic Twin-Line Hose



SAE100R8 - High Pressure - Non-Conductive

Two FC375 hoses welded together. Hose constructed of elastomer tube (Hytrel*), single braid polyester reinforcement, with orange polyurethane cover and operating temperature

range of -54°C to +93°C [-65°F to 200°F]. For more information, refer to catalog E-HOEV-MC001-E.

*Hytrel is a registered trademark of E.I. DuPont.

A/C and Refrigeration Hose

Refer to A/C and Refrigeration Catalog A-HOAC-MC001-E for more information on A/C and Refrigeration hose.

GH134 Multi-Refrigerant A/C and Refrigeration Hose



Exceeds SAE-J2064, Type E.

Hose constructed of polyimide veneer tube, with polyester reinforcement and chlorobutyl cover. Temperature range is -40°C to +135°C [-40°F to +275°F]. Fitting selection includes factory crimp and the E-Z Clip line of A/C connections.

For more information, refer to catalog A-HOAC-MC001-E.

FC558 R134a A/C and Refrigeration Hose



Meets SAE J2064 with 100R5 reusable fittings, sizes 10 to 24.

Butyl tube and polyester braid, abrasion-resistant cover. Designed to work with 100R5 reusable fittings. Temperature range is 40°C to +121°C [-40°F to +250°F].

For more information, refer to catalog A-HOAC-MC001-E.

FC802 Multi-Refrigerant A/C and Refrigeration Hose



Hose constructed of polyimide veneer tube, with synthetic rubber cover. Designed to work with 100R5 reusable fittings. Temperature range is -40°C to +121°C [-40°F to +250°F].

For more information, refer to catalog A-HOAC-MC001-E.

FC555 Multi-Refrigerant A/C and Refrigeration Hose



Meets SAE-J2064.

Flexible hose is constructed of a corrugated polyimide tube for exceptional flexibility in large bus applications. This is a factory crimp product. Please contact Eaton for additional information to qualify for field crimp of the

FC555 hose. Temperature range is -40°C to +125°C [-40°F to +257°F].

For more information, refer to catalog A-HOAC-MR001-E.

FC505 Low Effusion, Multi-Refrigerant A/C and Refrigeration Hose



Hose constructed of polyimide veneer tube with polyester reinforcement and synthetic rubber cover. The FC505 fitting program is factory crimp only.

Temperature range is -40°C to +135°C [-40°F to +275°F].

For more information, refer to catalog A-HOAC-MC001-E.

PTFE Hose

Refer to Everflex Catalog E-HOEV-MC001-E for more information on PTFE hose.

Smooth Bore "S" Series Hose



Everflex S Series tube is reinforced with 304 stainless steel wire. All sizes have a minimum of .040" thick extruded virgin PTFE. That is 33% more PTFE than most other manufacturers offer. The additional

PTFE results in improved bend radius, kink resistance and slows permeation of gases. Temperature range is -54°C to +230°C [-65°F to +450°F].

For more information, refer to catalog E-HOEV-MC001-E.

Smooth Bore "B" Series Hose



Everflex B Series is reinforced with bronze wire. All sizes have a minimum of 0.040" thick extended virgin PTFE. Everflex B Series hose has traditionally been used in high vibration envi-

ronments. Temperature range is -54°C to +204°C [-65°F to +400°F].

For more information, refer to catalog E-HOEV-MC001-E.

Smooth Bore "STW" Series Hose



Everflex STW Series tube is reinforced with 304 stainless steel wire. STW hose is available as an alternative where competitors' thin wall products are specified and S Series hose can not be substituted. Radius in inches to inside bend.

Multiply bend radius by 1.25 for dynamic applications. Temperature range is -54°C to +230°C [-65°F to +450°F].

For more information, refer to catalog E-HOEV-MC001-E.

Smooth Bore "S-3" Series Hose



S-3 with a PVC cover is a PTFE hose which can be used for DOT 571.106 hydraulic brake line applications. PVC cover is on the exterior in 0.020" thickness. The PVC cover is useful to protect motorcycle paint

jobs or provide durability in an abrasive environment. Temperature range is -40°C to +93°C [-40°F to +200°F].

For more information, refer to catalog E-HOEV-MC001-E.

Smooth Bore "SC" Series Hose



SC Series hose is identical to the S series with one exception. SC hose has an internal conductive static dissipating liner that provides a path to the hose end fittings for applications where flow induced electrostatic charges can occur.

Radius in inches to inside bend. Multiply bend radius by 1.25 for dynamic applications. Temperature range is -54°C to +230°C [-65°F to +450°F].

For more information, refer to catalog E-HOEV-MC001-E.

Smooth Bore "SCTW" Series Hose



SCTW Series hose is identical to the STW Series with one exception. SCTW hose has an internal conductive static dissipating liner that provides a path to the hose end fittings for applications where flow induced electro-

static charges can occur. Radius in inches to inside bend. Multiply bend radius by 1.25 for dynamic applications. Temperature range is -54°C to +204°C [-65°F to +400°F]. For more information, refer to catalog E-HOEV-MC001-E.

H243 PTFE Hose



Inner Tube: PTFE, braid: single stainless steel braid, 1" size double stainless steel braid (type 304). Temperature range is -54°C to +230°C [-65°F to +450°F].

Note: Not for use in applications requiring static dissipation.

For more information, refer to catalog E-HOEV-MC001-E.

H277 Conductive PTFE Hose



Inner Tube: PTFE, braid: single stainless steel braid, 1" size double stainless steel braid (type 304). Temperature range is -54°C to +230°C [-65°F to +450°F].

Note: Not for use in applications requiring static dissipation.

For more information, refer to catalog E-HOEV-MC001-E.

Smooth Bore "Hi-PSI" Series Hose



Hi-PSI Series hose is a heavy wall PTFE hose for very high pressure applications. The reinforcement is braided and not spiraled allowing for better hose flexibility.

Temperature range is -54°C to +204°C [-65°F to +400°F].

For more information, refer to catalog E-HOEV-MC001-E.

Conductive & Non-Conductive Convoluted Hose Conv-O-Crimp



Convoluted PTFE tube with 304 stainless steel wire braid reinforcement.

Industrial applications include: automotive, platten presses, pharmaceutical, truck and bus, reverse osmosis, hydraulics, chemical processing, steam, air,

water, tire manufacturing, electronics, steel mills, food processing, and tank truck transfer. Temperature range is -54°C to +204°C [-65°F to +400°F].

For more information, refer to catalog E-HOEV-MC001-E.

FC252

Silicone rubber (heater)



# Part Number	Hose I.D.		Hose O.D.		Maximum Operating Pressure		Minimum Burst Pressure		Minimum Bend Radius		Weight of Hose	
	mm	in	mm	in	bar	psi	bar	psi	mm	in	Kg/m	lbs/ft
FC252-06	9,7	0.38	18,3	0.72	3,5	50	14,0	200	38,1	1.50	0,22	0.15
FC252-08	12,7	0.50	20,6	0.81	3,5	50	14,0	200	50,8	2.00	0,27	0.18
FC252-10	16,0	0.63	23,9	0.94	2,8	40	11,0	160	63,5	2.50	0,28	0.19
FC252-12	19,1	0.75	26,9	1.06	2,8	40	11,0	160	76,2	3.00	0,41	0.28
FC252-16	25,4	1.00	34,0	1.34	2,5	35	10,0	140	101,6	4.00	0,53	0.36

Construction

Silicone rubber tube, braided fiber reinforcement and silicone rubber cover.

Operating Temperature Range
-54°C to +177°C [-65°F to +350°F]

Application

Heater hose for passenger cars and trucks; connecting lines from hot water heaters to coolant-circulating systems. For more information on specific fluid applications and high temperature ratings, see pages 349-355.

For Complete Agency Listings

See pages 346-348.

Fitting Reference Page

Reusable	
Clamp	184

FC352

Silicone rubber (coolant)



# Part Number	Hose I.D.		Hose O.D.		Maximum Operating Pressure		Minimum Burst Pressure		Weight of Hose	
	mm	in	mm	in	bar	psi	bar	psi	Kg/m	lbs/ft
FC352-08	12,7	0.50	23,9	0.94	7,0	100	30,0	425	0,25	0.17
FC352-10	16,0	0.63	26,9	1.06	7,0	100	30,0	425	0,32	0.22
FC352-12	19,1	0.75	30,2	1.19	7,0	100	30,0	425	0,40	0.27
FC352-14	22,4	0.88	33,5	1.32	7,0	100	30,0	425	0,46	0.31
FC352-16	25,4	1.00	36,6	1.44	6,0	90	26,0	375	0,50	0.34
FC352-18	28,4	1.12	39,6	1.56	6,0	90	26,0	375	0,61	0.41
FC352-20	31,8	1.25	42,9	1.69	5,9	85	24,0	350	0,66	0.45
FC352-22	35,1	1.38	46,2	1.82	5,9	85	24,0	350	0,74	0.50
FC352-24	38,1	1.50	49,3	1.94	5,9	85	24,0	350	0,81	0.55
FC352-26	41,4	1.63	52,3	2.06	5,6	80	22,0	325	0,86	0.58
FC352-28	44,5	1.75	55,6	2.19	5,6	80	22,0	325	0,93	0.63
FC352-32	50,8	2.00	62,0	2.44	5,2	75	21,0	300	1,06	0.72
FC352-36	57,2	2.25	68,3	2.69	5,2	75	21,0	300	1,20	0.81
FC352-38	60,1	2.38	71,6	2.82	4,2	60	17,0	250	1,24	0.84
FC352-40	63,5	2.50	74,7	2.94	4,2	60	17,0	250	1,31	0.89
FC352-44	69,9	2.75	81,0	3.19	3,5	50	14,0	200	1,45	0.98
FC352-48	76,2	3.00	87,4	3.44	3,5	50	14,0	200	1,56	1.06
FC352-56	88,9	3.50	100,1	3.94	2,8	40	12,0	175	1,85	1.25
FC352-64	101,6	4.00	112,8	4.44	2,5	35	10,5	150	2,13	1.44
FC352-96	152,4	6.00	164,3	6.47	2,0	25	7,0	100	3,45	2.34
FC352-112	177,8	7.00	189,7	7.47	1,0	19	6,0	75	4,03	2.73

Construction

Silicone rubber tube, four spirals of nylon and silicone rubber cover.

Operating Temperature Range
-54°C to +177°C [-65°F to +350°F]

Application

Coolant system service with liquid-cooled engines. For more information on specific fluid applications and high temperature ratings, see pages 349-355.

For Complete Agency Listings

See pages 346-348.

Fitting Reference Page

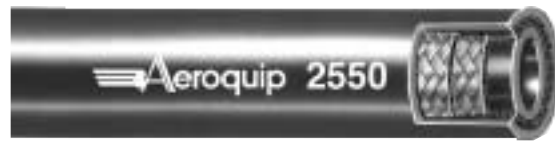
Reusable	
Clamp	184

SPECIALTY & TRUCK HOSE
 LOW & MEDIUM PRESSURE HOSE
 HIGH PRESSURE HOSE
 HOSE FITTINGS
 ADAPTERS & TUBE FITTINGS
 ACCESSORIES & ASSEMBLY INSTRUCTIONS
 HOSE ASSEMBLY EQUIPMENT
 APPENDICIES

2550/2554

Airbrake

SAE J1402 FMVSS106



#	Hose I.D.		Hose O.D.		Maximum Operating Pressure		Minimum Burst Pressure		Minimum Bend Radius		Weight of Hose	
	mm	in.	mm	in.	bar	psi	bar	psi	mm	in.	Kg/m	lbs/ft
2550-6	9,7	0.38	19,1	0.75	16,0	225	62,0	900	44,5	1.75	0,30	0.20
2554-6	9,7	0.38	19,1	0.75	16,0	225	62,0	900	95,3	3.75	0,27	0.18

Construction

Synthetic rubber tube, double textile braids and synthetic rubber cover.

Operating Temperature Range

2550: -40°C to +93°C
[-40°F to +200°F],

2554: -54°C to +100°C
[-65°F to +212°F]

Application

Tractor to trailer lines, axle chamber lines and tractor service lines. For more information on specific fluid applications and high temperature ratings, see pages 349-355.

2554 Conforms to ordinance spec. MIL-H-3992B, Type 1, Class 1.

For Complete Agency Listings

See pages 346-348.

Fitting Reference Page

<i>Reusable</i>	
Fitting	182
Socket Data	65

Factory crimp fittings also available. Contact Eaton for details.

2570

SAE J1402 FMVSS106



#	Hose I.D.		Hose O.D.		Maximum Operating Pressure		Minimum Burst Pressure		Minimum Bend Radius		Weight of Hose	
	mm	in.	mm	in.	bar	psi	bar	psi	mm	in.	Kg/m	lbs/ft
2570-6	9,7	0.38	19,1	0.75	16,0	225	62,0	900	44,5	1.75	0,27	0.18
2570-8	12,7	0.50	22,4	0.88	16,0	225	62,0	900	50,8	2.00	0,34	0.23
2570-10†	15,7	0.62	26,9	1.06	16,0	225	62,0	900	57,2	2.25	0,44	0.30

Construction

Synthetic rubber tube, double textile braid and synthetic rubber cover.

Operating Temperature Range

-40°C to +100°C [-40°F to +212°F]

Application

Tractor to trailer lines, axle chamber lines and tractor service lines. For more information on specific fluid applications and high temperature ratings, see pages 349-355.

For Complete Agency Listings

See pages 346-348.

† Crimp Fittings only, contact Eaton Aeroquip.

Fitting Reference Page

<i>Reusable</i>	
Fitting	182
Socket Data	65

Factory crimp fittings also available. Contact Eaton for details.

FC629

SAE J1402 FMVSS106



#	Hose I.D.		Hose O.D.		Maximum Operating Pressure		Minimum Burst Pressure		Minimum Bend Radius		Weight of Hose	
	mm	in.	mm	in.	bar	psi	bar	psi	mm	in.	Kg/m	lbs/ft
FC629-06	9,7	0.38	19,8	0.78	15,0	225	62,0	900	44,5	1.75	0,27	0.18
FC629-08	12,7	0.50	23,1	0.91	15,0	225	62,0	900	50,8	2.00	0,30	0.20

Construction

Synthetic rubber tube, single polyester braid and synthetic rubber cover.

Operating Temperature Range

-40°C to +100°C [-40°F to +212°F]

Application

Tractor to trailer lines, axle chamber lines and tractor service lines. For more information on specific fluid applications and high temperature ratings, see pages 349-355.

For Complete Agency Listings

See pages 346-348.

Factory crimp fittings available. Contact Eaton for details.

FC829 Airbrake

SAE J1402 FMVSS106



# Part Number	Hose I.D.		Hose O.D.		Maximum Operating Pressure		Minimum Burst Pressure		Minimum Bend Radius		Weight of Hose	
	mm	in.	mm	in.	bar	psi	bar	psi	mm	in.	Kg/m	lbs/ft
FC829-08	12,7	0.50	23,1	0.91	15	225	62	900	76,2	3.00	0,27	0.18

Construction

EPDM rubber tube, double textile braids and EPDM rubber cover.

Application

Tractor to trailer lines, axle chamber lines and tractor service lines. For more information on specific fluid applications and high temperature ratings, see pages 349-355.

For Complete Agency Listings

See pages 346-348.

Factory crimp fittings available.

Contact Eaton for details.

Operating Temperature Range

-40°C to +100°C [-40°F to +212°F]

1531/1531A Railroad Airbrake

Exceeds AAR-M618



# Part Number	Hose I.D.		Hose O.D.		Maximum Operating Pressure		Minimum Burst Pressure		Minimum Bend Radius		Weight of Hose	
	mm	in.	mm	in.	bar	psi	bar	psi	mm	in.	Kg/m	lbs/ft
1531-10‡	12,7	0.50	23,9	0.94	21,0	300	84,0	1200	139,7	5.50	0,57	0.38
1531-12	16,0	0.63	28,4	1.12	21,0	300	84,0	1200	165,1	6.50	0,71	0.48
1531-16‡	22,4	0.88	35,1	1.38	21,0	300	84,0	1200	187,5	7.38	1,07	0.72
1531-20	28,7	1.13	41,4	1.63	21,0	300	84,0	1200	241,3	9.50	1,16	0.78
1531A-24‡	35,1	1.38	47,8	1.88	21,0	300	84,0	1200	266,7	10.50	1,55	1.04

Construction

Synthetic rubber tube, partial textile braid, wire reinforcement (1531-10 and 1531-12 have single wire braid; 1531-16, 1531-20 and 1531A-24 have double wire braid) and synthetic rubber cover.

Application

Locomotive airbrake lines. For more information on specific fluid applications and high temperature ratings, see pages 349-355.

For Complete Agency Listings

See pages 346-348.

Fitting Reference Page

<i>Reusable</i>	
Fitting	185
Socket Data	65

‡ Crimp fittings also available for these sizes. Contact Eaton for information.

Operating Temperature Range

-54°C to +100°C [-65°F to +212°F]

FC355 AQP Engine & Airbrake

FMVSS106



# Part Number	Hose I.D.		Hose O.D.		Maximum Operating Pressure		Minimum Burst Pressure		Minimum Bend Radius		Vacuum Service		Weight of Hose	
	mm	in	mm	in	bar	psi	bar	psi	mm	in	kPa	in/Hg	Kg/m	lbs/ft
FC355-04	4,8	0.19	13,2	0.52	105,0	1500	420,0	6000	19,1	0.75	94,8	28	0,22	0.17
FC355-05	6,4	0.25	14,7	0.58	105,0	1500	420,0	6000	25,4	1.00	94,8	28	0,34	0.20
FC355-06	7,9	0.31	17,3	0.68	105,0	1500	420,0	6000	31,8	1.25	94,8	28	0,35	0.24
FC355-08	10,4	0.41	19,6	0.77	87,0	1250	350,0	5000	44,5	1.75	94,8	28	0,43	0.29
FC355-10	12,7	0.50	23,9	0.94	87,0	1250	350,0	5000	57,2	2.25	94,8	28	0,59	0.40
FC355-12	16,0	0.63	27,4	1.08	52,0	750	210,0	3000	69,9	2.75	67,7	20	0,68	0.46
FC355-16	22,4	0.88	31,5	1.24	28,0	400	112,0	1600	88,9	3.50	50,8	15	0,74	0.50
FC355-20	28,7	1.13	38,6	1.52	21,0	300	87,0	1250	114,3	4.50	50,8	15	0,87	0.59
FC355-24	35,1	1.38	44,5	1.75	17,0	250	70,0	1000	139,7	5.50	37,2	11	1,02	0.69
FC355-32	46,0	1.81	56,4	2.22	14,0	200	56,0	800	215,9	8.50	37,2	11	1,37	0.93

Construction

AQP elastomer tube, polyester inner braid and a single wire braid reinforcement, blue AQP elastomer cover.

Operating Temperature Range

-40°C to +150°C [-40°F to +300°F]

Air not to exceed 250 psi or +250°C [+121°F].

Application

Air, gasoline, fuel, lubricating oils and coolants. For more information on specific fluid applications and high temperature ratings, see pages 349-355.

For Complete Agency Listings

See pages 346-348.

Fitting Reference Page

<i>Crimp</i>	
100R5	134
<i>Reusable</i>	
Fitting	136
Socket Data	65

FC350 AQP Engine & Airbrake

FMVSS106



# Part Number	Hose I.D.		Hose O.D.		Maximum Operating Pressure		Minimum Burst Pressure		Minimum Bend Radius		Vacuum Service		Weight of Hose	
	mm	in	mm	in	bar	psi	bar	psi	mm	in	kPa	in/Hg	Kg/m	lbs/ft
FC350-04	4,8	0.19	13,2	0.52	140,0	2000	560,0	8000	19,1	0.75	94,8	28	0,22	0.13
FC350-05	6,4	0.25	14,7	0.58	105,0	1500	420,0	6000	25,4	1.00	94,8	28	0,34	0.16
FC350-06	7,9	0.31	17,3	0.68	105,0	1500	420,0	6000	31,8	1.25	94,8	28	0,35	0.20
FC350-08	10,4	0.41	19,6	0.77	87,0	1250	350,0	5000	44,5	1.75	94,8	28	0,43	0.23
FC350-10	12,7	0.50	23,9	0.94	87,0	1250	350,0	5000	57,2	2.25	94,8	28	0,59	0.33
FC350-12	16,0	0.63	27,4	1.08	52,0	750	210,0	3000	69,9	2.75	67,7	20	0,68	0.39
FC350-16	22,4	0.88	31,2	1.23	28,0	400	112,0	1600	88,9	3.50	50,8	15	0,74	0.50
FC350-20	28,4	1.12	38,1	1.50	21,0	300	84,0	1200	114,3	4.50	50,8	15	0,87	0.56
FC350-24	35,1	1.38	44,5	1.75	17,0	250	70,0	1000	139,7	5.50	37,2	11	1,02	0.63

Construction

AQP elastomer tube, polyester inner braid and a single wire braid reinforcement; black polyester textile braided cover.

Operating Temperature Range

-49°C to +150°C [-55°F to +300°F]

Air not to exceed +121°C [+250°F].

Application

Air, gasoline, fuel lubricating oils and coolants. For more information on specific fluid applications and high temperature ratings, see pages 349-355.

For Complete Agency Listings

See pages 346-348.

Fitting Reference Page

<i>Crimp</i>	
100R5	134
<i>Reusable</i>	
Fitting	136
Socket Data	65

FC650 AQP

High temperature fuel & oil



# Part Number	Hose I.D.		Hose O.D.		Maximum Operating Pressure		Minimum Burst Pressure		Minimum Bend Radius		Vacuum Service		Weight of Hose	
	mm	in	mm	in	bar	psi	bar	psi	mm	in	kPa	in/Hg	Kg/m	lbs/ft
FC650-04	4,8	0.19	12,2	0.48	70,0	1000	280,0	4000	19,1	0.75	94,8	28	0,15	0.10
FC650-06	7,9	0.31	16,0	0.63	70,0	1000	280,0	4000	31,8	1.25	94,8	28	0,22	0.15
FC650-08	10,4	0.41	18,8	0.74	70,0	1000	280,0	4000	44,5	1.75	94,8	28	0,28	0.19
FC650-10	12,7	0.50	21,1	0.83	70,0	1000	280,0	4000	57,2	2.25	94,8	28	0,34	0.23
FC650-12	16,0	0.63	25,1	0.99	70,0	1000	280,0	4000	69,9	2.75	67,7	20	0,41	0.28

Construction

AQP elastomer tube, single wire braid reinforcement, black polyester braided cover.

Operating Temperature Range

-49°C to +150°C [-55°F to +300°F]
Air not to exceed +121°C [+250°F].

Application

Diesel fuel, gasoline, lubricating oils, water, coolant and air. Not approved for airbrake applications. For more information on specific fluid applications and high temperature ratings, see pages 349-355.

For Complete Agency Listings

See pages 346-348.

Factory crimp fittings available.

Contact Eaton for details.

FC699 AQP

High temperature fuel



AQP lightweight engine hose

# Part Number	Hose I.D.		Hose O.D.		Maximum Operating Pressure		Minimum Burst Pressure		Minimum Bend Radius		Vacuum Service		Weight of Hose	
	mm	in	mm	in	bar	psi	bar	psi	mm	in	kPa	in/Hg	Kg/m	lbs/ft
FC699-04	6,4	0.25	12,4	0.49	28,0	400	112,0	1600	31,8	1.25	94,8	28	0,09	0.06
FC699-06	9,7	0.38	16,0	0.63	28,0	400	112,0	1600	38,1	1.50	94,8	28	0,15	0.10
FC699-08	12,7	0.50	19,6	0.77	28,0	400	112,0	1600	50,8	2.00	94,8	28	0,19	0.13
FC699-10	16,0	0.63	23,9	0.94	24,0	350	98,0	1400	63,5	2.50	61,0	18	0,27	0.18
FC699-12	19,1	0.75	27,4	1.08	24,0	350	98,0	1400	76,2	3.00	61,0	18	0,30	0.20
FC699-16	25,4	1.00	33,8	1.33	17,0	250	70,0	1000	114,3	4.50	61,0	18	0,41	0.28

Construction

AQP elastomer tube, single aramid reinforcement braid and textile braided cover.

Operating Temperature Range

-40°C to +150°C [-40°F to +300°F]
Air not to exceed 250 psi or +250°C [+121°F].

Application

Diesel fuel, gasoline, crude and lubricating oils. For more information on specific fluid applications and high temperature ratings, see pages 349-355.

For Complete Agency Listings

See pages 346-348.

Fitting Reference Page

Crimp	
OTC	66

FC234 AQP

High temperature fuel and oil

Fire resistant USCG/MMT, NMMA/BIA



# Part Number	Hose I.D.		Hose O.D.		Maximum Operating Pressure		Minimum Burst Pressure		Minimum Bend Radius		Vacuum Service		Weight of Hose	
	mm	in	mm	in	bar	psi	bar	psi	mm	in	kPa	in/Hg	Kg/m	lbs/ft
FC234-05	6,4	0.25	14,7	0.58	105,0	1500	420,0	6000	25,4	1.00	94,8	28	0,32	0.22
FC234-06	7,9	0.31	17,3	0.68	105,0	1500	420,0	6000	31,8	1.25	94,8	28	0,37	0.25
FC234-08	10,4	0.41	19,3	0.76	87,0	1250	350,0	5000	44,5	1.75	94,8	28	0,44	0.30
FC234-10	12,7	0.50	23,9	0.94	87,0	1250	350,0	5000	57,2	2.25	94,8	28	0,66	0.45
FC234-12	16,0	0.63	27,4	1.08	52,0	750	210,0	3000	69,9	2.75	67,7	20	0,71	0.48
FC234-16	22,4	0.88	31,5	1.24	28,0	400	112,0	1600	88,9	3.50	54,2	16	0,75	0.51

Construction

AQP elastomer tube, brass plated steel wire reinforcement, braided refractory insulation and blue AQP elastomer cover.

Operating Temperature Range

-40°C to +150°C [-40°F to +300°F]

Application

Diesel fuel, gasoline, hot lube oil and water. For more information on specific fluid applications and high temperature ratings, see pages 349-355.

For Complete Agency Listings

See pages 346-348.

Fitting Reference Page

<i>Crimp</i>	
100R5	134
<i>Reusable</i>	
Fitting	136
Socket Data	65

2651

Single wire braid

SAE 100R5 performance



# Part Number	Hose I.D.		Hose O.D.		Maximum Operating Pressure		Minimum Burst Pressure		Minimum Bend Radius		Vacuum Service		Weight of Hose	
	mm	in	mm	in	bar	psi	bar	psi	mm	in	kPa	in/Hg	Kg/m	lbs/ft
2651-4	4,8	0.19	13,2	0.52	210,0	3000	840,0	12000	76,2	3.00	94,8	28	0,19	0.13
2651-5	6,4	0.25	14,7	0.58	210,0	3000	840,0	12000	85,9	3.38	94,8	28	0,24	0.16
2651-6	7,9	0.31	17,3	0.68	157,0	2250	630,0	9000	101,6	4.00	94,8	28	0,34	0.23
2651-8	10,4	0.41	19,1	0.75	140,0	2000	560,0	8000	117,3	4.62	94,8	28	0,38	0.26
2651-10	12,7	0.50	23,4	0.92	122,0	1750	490,0	7000	139,7	5.50	94,8	28	0,55	0.37
2651-12	16,0	0.63	27,4	1.08	105,0	1500	420,0	6000	165,1	6.50	94,8	28	0,68	0.46
2651-16	22,4	0.88	31,2	1.23	56,0	800	224,0	3200	187,5	7.38	67,7	20†	0,65	0.44
2651-20	28,4	1.12	38,1	1.50	43,0	625	175,0	2500	228,6	9.00	67,7	20†	0,77	0.52
2651-24	35,1	1.38	44,5	1.75	35,0	500	140,0	2000	266,7	10.50	50,8	15†	0,99	0.67
2651-32	46,0	1.81	56,4	2.22	24,0	350	98,0	1400	336,6	13.25	37,3	11†	1,39	0.94
2651-40	60,1	2.38	73,2	2.88	24,0	350	98,0	1400	609,6	24.00	37,3	11†	2,11	1.43

Construction

Synthetic rubber tube, textile inner braid, single wire braid reinforcement, outer textile braid and synthetic rubber cover.

Operating Temperature Range

-40°C to +100°C [-40°F to +212°F]

Application

Hydraulics, gasoline, fuel and lubricating oils, air and water. Air not to exceed 250 psi or +71°C [+160°F]. For more information on specific fluid applications and high temperature ratings, see pages 349-355.

For Complete Agency Listings

See pages 346-348.

†Maximum negative pressures shown for -16 and larger are suitable for hose which has suffered no external damage or kinking. If greater negative pressures are required for -16 and larger hoses, the use of an internal support coil is recommended.

Fitting Reference Page

<i>Reusable</i>	
Fitting	136
Socket Data	65

303/302A Single wire braid

MIL-DTL-8794



# Part Number	Hose I.D.		Hose O.D.		Maximum Operating Pressure		Minimum Burst Pressure		Minimum Bend Radius		Vacuum Service		Weight of Hose	
	mm	in	mm	in	bar	psi	bar	psi	mm	in	kPa	in/Hg	Kg/m	lbs/ft
303-4	4,8	0.19	13,2	0.52	210,0	3000	840,0	12000	76,2	3.00	94,8	28	0,22	0.15
303-5	6,4	0.25	14,7	0.58	210,0	3000	700,0	10000	85,9	3.38	94,8	28	0,28	0.19
303-6	7,9	0.31	17,3	0.68	140,0	2000	630,0	9000	101,6	4.00	94,8	28	0,32	0.22
303-8	10,4	0.41	19,6	0.77	140,0	2000	560,0	8000	117,3	4.62	94,8	28	0,38	0.26
303-10	12,7	0.50	23,4	0.92	122,0	1750	490,0	7000	139,7	5.50	94,8	28	0,53	0.36
303-12	16,0	0.63	27,4	1.08	105,0	1500	420,0	6000	165,1	6.50	94,8	28	0,62	0.46
302A-16	22,4	0.88	31,2	1.23	56,0	800	224,0	3200	187,5	7.38	94,8	28	0,55	0.44
302A-20	28,4	1.12	38,1	1.50	42,0	600	175,0	2500	228,6	9.00	94,8	28	0,68	0.52
302A-24	35,1	1.38	44,5	1.75	35,0	500	140,0	2000	279,4	11.00	94,8	28	0,81	0.67
302A32	46,0	1.81	56,4	2.22	24,0	350	98,0	1400	336,6	13.25	94,8	28	1,15	0.94

Construction
Synthetic rubber tube, textile inner braid, single wire braid reinforcement and black textile braid cover.

Operating Temperature Range
303 hose: -54°C to +121°C
[65°F to +250°F]

302A hose: -40°C to +121°C
[-40°F to +250°F]

Application
Hydraulics, air, gasoline, fuel and lubricating oils. Air not to exceed +71°C [+160°F]. For more information on specific fluid applications and high temperature ratings, see pages 349-355.

For Complete Agency Listings
See pages 346-348.

Fitting Reference	Page
Reusable	
Fitting	136
Socket Data	65

1503 Single wire braid

SAE 100R5



# Part Number	Hose I.D.		Hose O.D.		Maximum Operating Pressure		Minimum Burst Pressure		Minimum Bend Radius		Vacuum Service		Weight of Hose	
	mm	in	mm	in	bar	psi	bar	psi	mm	in	kPa	in/Hg	Kg/m	lbs/ft
1503-4	4,8	0.19	13,2	0.52	210,0	3000	840,0	12000	76,2	3.00	94,8	28	0,19	0.13
1503-5	6,4	0.25	14,7	0.58	210,0	3000	840,0	12000	85,9	3.38	94,8	28	0,24	0.16
1503-6	7,9	0.31	17,3	0.68	157,0	2250	630,0	9000	101,6	4.00	94,8	28	0,27	0.23
1503-8	10,4	0.41	19,6	0.77	140,0	2000	560,0	8000	117,3	4.62	94,8	28	0,32	0.26
1503-10	12,7	0.50	23,4	0.92	122,0	1750	490,0	7000	139,7	5.50	94,8	28	0,49	0.37
1503-12	16,0	0.63	27,4	1.08	105,0	1500	420,0	6000	165,1	6.50	94,8	28	0,58	0.46
1503-16	22,4	0.88	31,2	1.23	56,0	800	224,0	3200	187,5	7.38	67,7	20†	0,55	0.44
1503-20	28,4	1.12	38,1	1.50	43,0	625	175,0	2500	228,6	9.00	67,7	20†	0,68	0.52
1503-24	35,1	1.38	44,5	1.75	35,0	500	140,0	2000	266,7	10.50	50,8	15†	0,92	0.67
1503-32	46,0	1.81	56,6	2.23	24,0	350	98,0	1400	366,6	13.25	37,3	11†	1,28	0.94
1503-40	60,1	2.38	73,2	2.88	24,0	350	98,0	1400	609,6	24.00	37,3	11†	2,11	1.43

Construction
Synthetic rubber tube, textile inner braid, single wire braid reinforcement and black textile braid cover.

Operating Temperature Range
-40°C to +121°C [-40°F to +250°F]

Air not to exceed +71°C [+160°F].

Application
Hydraulics, air, gasoline, fuel and lubricating oils. For more information on specific fluid applications and high temperature ratings, see pages 349-355.

†Maximum negative pressures shown for -16 and larger are suitable only for those which has suffered no external damage or kinking. If greater negative pressures are required for -16 and larger hoses, the use of an internal support coil is recommended.

For Complete Agency Listings
See pages 346-348.

Fitting Reference	Page
Crimp	
100R5	134
Reusable	
Fitting	136
Socket Data	65

SPECIALTY & TRUCK HOSE
 LOW & MEDIUM PRESSURE HOSE
 HIGH PRESSURE HOSE
 HOSE FITTINGS
 ADAPTERS & TUBE FITTINGS
 ACCESSORIES & ASSEMBLY INSTRUCTIONS
 HOSE ASSEMBLY EQUIPMENT
 APPENDICES

FC300 AQP Single wire braid

Exceeds SAE 100R5



# Part Number	Hose I.D.		Hose O.D.		Maximum Operating Pressure		Minimum Burst Pressure		Minimum Bend Radius		Vacuum Service		Weight of Hose	
	mm	in	mm	in	bar	psi	bar	psi	mm	in	kPa	in/Hg	Kg/m	lbs/ft
FC300-04	4,8	0.19	13,2	0.52	210,0	3000	840,0	12000	76,2	3.00	94,8	28	0,19	0.13
FC300-05	6,4	0.25	14,7	0.58	210,0	3000	840,0	12000	85,9	3.38	94,8	28	0,24	0.16
FC300-06	7,9	0.31	17,3	0.67	157,0	2250	630,0	9000	101,6	4.00	94,8	28	0,27	0.23
FC300-08	10,4	0.41	19,6	0.76	140,0	2000	560,0	8000	117,3	4.62	94,8	28	0,32	0.26
FC300-10	12,7	0.50	23,4	0.93	122,0	1750	490,0	7000	139,7	5.50	94,8	28	0,49	0.37
FC300-12	16,0	0.63	27,4	1.08	105,0	1500	420,0	6000	165,1	6.50	94,8	28	0,58	0.46
FC300-16	22,4	0.88	31,2	1.27	56,0	800	224,0	3200	187,5	7.38	67,7	20†	0,55	0.44
FC300-20	28,4	1.12	38,1	1.50	43,0	625	175,0	2500	228,6	9.00	67,7	20†	0,68	0.52
FC300-24	35,1	1.38	44,5	1.75	35,0	500	140,0	2000	266,7	10.50	50,8	15†	0,92	0.67
FC300-32‡	46,0	1.81	56,4	2.22	21,0	300	84,0	1200	336,6	13.25	37,3	11†	1,28	0.94
FC300-40‡	60,1	2.38	73,2	2.88	21,0	300	84,0	1200	609,6	24.00	27,1	8†	2,11	1.50

Construction

AQP elastomer tube, polyester inner braid, single wire braid reinforcement and blue polyester braid cover.

Operating Temperature Range

-49°C to +150°C [-55°F to +300°F]

Air not to exceed +121°C [+250°F].

Application

Hydraulics handling petroleum base fluids and air, gasoline, fuel and lubricating oils, fire resistant hydraulic fluids and other industrial fluids. For more information on specific fluid applications and high temperature ratings, see pages 349-355.

†Maximum negative pressure shown for -16 and larger are suitable for those which has suffered no external damage or kinking. If greater negative pressures are required for -16 and larger hoses, the use of an internal support coil is recommended.

‡ Does not comply with SAE 100R5 operating pressure of 350 psi or minimum burst of 1400 psi.

For Complete Agency Listings
See pages 346-348.

Fitting Reference Page

Crimp	
100R5	134
Reusable	
Fitting	136
Socket Data	65

FC321 LPG UL listing MH6044



# Part Number	Hose I.D.		Hose O.D.		Maximum Operating Pressure		Minimum Burst Pressure		Minimum Bend Radius		Weight of Hose	
	mm	in	mm	in	bar	psi	bar	psi	mm	in	Kg/m	lbs/ft
FC321-04	4,8	0.19	13,2	0.52	24,0	350	122,0	1750	38,1	1.50	0,16	0.11
FC321-05	6,4	0.25	14,7	0.58	24,0	350	122,0	1750	44,5	1.75	0,19	0.13
FC321-06	7,9	0.31	17,0	0.67	24,0	350	122,0	1750	50,8	2.00	0,27	0.18
FC321-08	10,4	0.41	19,6	0.77	24,0	350	122,0	1750	58,7	2.31	0,31	0.21
FC321-10	12,7	0.50	23,4	0.92	24,0	350	122,0	1750	69,9	2.75	0,43	0.29
FC321-12	16,0	0.63	27,4	1.08	24,0	350	122,0	1750	82,6	3.25	0,55	0.37
FC321-16	22,4	0.88	31,5	1.24	24,0	350	122,0	1750	93,7	3.69	0,56	0.38

Construction

Synthetic rubber tube, a textile inner braid, a stainless steel wire braid reinforcement and a synthetic rubber impregnated textile braid cover.

Operating Temperature Range

-40°C to +121°C [-40°F to +250°F]

Application

Designed for butane-propane applications on either mobile or stationary equipment. For more information on specific fluid applications and high temperature ratings, see pages 349-355.

WARNING: LPG is a very hazardous liquid or gas and should be handled with maximum care to prevent leakage. Since the gas is heavier than air, it may flow along the ground if it escapes and cause an explosion or a fire. No leakage should ever be tolerated.

For Complete Agency Listings
See pages 346-348.

Fitting Reference Page

Reusable	
Fitting	136
Socket Data	65

CR170 LPG Single stainless steel braid

CGA (Canadian Gas Association) Type III



# Part Number	Hose I.D.		Hose O.D.		Maximum Operating Pressure		Minimum Burst Pressure		Minimum Bend Radius		Weight of Hose	
	mm	in	mm	in	bar	psi	bar	psi	mm	in	Kg/m	lbs/ft
CR170-04	4,8	0.19	13,2	0.52	24,0	350	840,0	12000	76,2	3.00	0,24	0.16
CR170-06	7,9	0.31	17,0	0.67	24,0	350	630,0	9000	101,6	4.00	0,32	0.22
CR170-08	10,4	0.41	19,6	0.77	24,0	350	560,0	8000	117,3	4.62	0,38	0.26
CR170-12	15,9	0.63	28,0	1.10	24,0	350	414,0	6000	165,1	6.50	0,71	0.48

Construction

Nylon tube, single stainless steel braid reinforcement, perforated synthetic rubber cover.

Operating Temperature Range

-40°C to +121°C [-40°F to +250°F]

Application

LPG (propane) vehicle, alternative fuel conversion systems. For more information on specific fluid applications and high temperature ratings, see pages 349-355.

WARNING: LPG is a very hazardous liquid or gas and should be handled with maximum care to prevent leakage. Since the gas is heavier than air, it may flow along the ground if it escapes and cause an explosion or a fire. No leakage should ever be tolerated.

Factory crimp fittings available. Contact Eaton for details.

For Complete Agency Listings

See pages 346-348.

NOTE: Must be CGA certified to crimp assemblies.

2807 PTFE

SAE 100R14A



# Part Number	Hose I.D.		Hose O.D.		Maximum Operating Pressure		Minimum Burst Pressure		Minimum Bend Radius		Vacuum Service		Weight of Hose	
	mm	in	mm	in	bar	psi	bar	psi	mm	in	kPa	in/Hg	Kg/m	lbs/ft
2807-03	3,6	0.14	6,4	0.25	210,0	3000	840,0	12000	38,1	1.50	94,8	28	0,06	0.04
2807-04	4,8	0.19	7,6	0.30	210,0	3000	840,0	12000	50,8	2.00	94,8	28	0,09	0.06
2807-05	6,6	0.26	9,4	0.37	210,0	3000	840,0	12000	76,2	3.00	94,8	28	0,12	0.08
2807-06	8,1	0.32	10,9	0.43	175,0	2500	700,0	10000	101,6	4.00	94,8±	28±	0,15	0.10
2807-08	10,7	0.42	13,7	0.54	140,0	2000	560,0	8000	133,4	5.25	94,8±	28±	0,18	0.12
2807-10	13,0	0.51	16,0	0.63	105,0	1500	420,0	6000	165,1	6.50	94,8±	28±	0,24	0.16
2807-12	16,3	0.64	19,3	0.76	84,0	1200	335,0	4800	196,9	7.75	94,8±	28±	0,27	0.18
2807-16	22,4	0.88	26,2	1.03	70,0	1000	280,0	4000	228,6	9.00	40,6±	12±	0,39	0.26
2807-20	28,4	1.12	32,8	1.29	43,0	625	175,0	2500	406,4	16.00	40,6±	12±	0,51	0.34

Construction

Extruded PTFE tube with stainless steel single wire braid.

Operating Temperature Range

-73°C to +260°C [-100°F to +500°F]

Application

Hot air, steam, compressor discharge and most chemical applications. Not recommended for steam-cold water cycling. For more information on specific fluid applications and high temperature ratings, see pages 349-355.

† Steam 200 psi at +388°F max. Engineering information is available for specific critical temperature requirements. Contact Eaton.

‡Maximum negative pressure for -06 and larger are suitable for hose which has suffered no external damage or kinking. If greater negative pressures are required for -06 and larger hoses, the use of an internal support coil is recommended. Use of an internal support coil in -06 and larger PTFE hose is recommended for tube support where extended or continuous service at high temperature together with low or negative pressure is expected.

Fitting Reference Page

<i>Crimp</i>	
Fitting	129
Socket Data	64
<i>Reusable</i>	
Fitting	186
Socket Data	65

For Complete Agency Listings

See pages 346-348.

FC807 PTFE

SAE 100R14A



# Part Number	Hose I.D.		Hose O.D.		Maximum Operating Pressure		Minimum Burst Pressure		Minimum Bend Radius		Vacuum Service		Weight of Hose	
	mm	in	mm	in	bar	psi	bar	psi	mm	in	kPa	in/Hg	Kg/m	lbs/ft
2807-04	4,8	0.19	7,6	0.30	210,0	3000	840,0	12000	50,8	2.00	94,8	28	0,09	0.06
2807-05	6,6	0.26	9,4	0.37	210,0	3000	840,0	12000	76,2	3.00	94,8	28	0,12	0.08
2807-06	8,1	0.32	10,9	0.43	175,0	2500	700,0	10000	101,6	4.00	94,8†	28†	0,15	0.10
2807-08	10,7	0.42	13,7	0.54	140,0	2000	560,0	8000	133,4	5.25	94,8†	28†	0,18	0.12
2807-10	13,0	0.51	16,0	0.63	105,0	1500	420,0	6000	165,1	6.50	94,8†	28†	0,24	0.16
2807-12	16,3	0.64	19,3	0.76	84,0	1200	335,0	4800	196,9	7.75	94,8†	28†	0,27	0.18
2807-16	22,4	0.88	26,2	1.03	70,0	1000	280,0	4000	228,6	9.00	40,6†	12†	0,35	0.26

Construction

Extruded PTFE tube with stainless steel single wire braid and one end of Red Nomex*.

Operating Temperature Range

-54°C to +230°C [-65°F to +450°F]

Application

Hot air, steam, compressor discharge and most chemical applications. Not recommended for steam-cold water cycling. For more information on specific fluid applications and high temperature ratings, see pages 349-355.

*Nomex is a trademark of E.I. DuPont.

‡ Maximum negative pressure for -16 and larger are suitable for hose which has suffered no external damage or kinking. If greater negative pressures are required for -16 and larger hoses, the use of an internal support coil is recommended. Use of an internal support coil in -06 and larger PTFE hose is recommended for tube support where extended or continuous service at high temperature together with low or negative pressure is expected.

For Complete Agency Listings
See pages 346-348.

Fitting Reference Page

<i>Crimp</i>	
Fitting	129
Socket Data	64
<i>Reusable</i>	
Fitting	186
Socket Data	65

FC465 PTFE

Conductive SAE 100R14B



# Part Number	Hose I.D.		Hose O.D.		Maximum Operating Pressure		Minimum Burst Pressure		Minimum Bend Radius		Vacuum Service		Weight of Hose	
	mm	in	mm	in	bar	psi	bar	psi	mm	in	kPa	in/Hg	Kg/m	lbs/ft
FC465-03	3,6	0.14	6,4	0.25	210,0	3000	840,0	12000	38,1	1.50	94,8	28	0,06	0.04
FC465-04	4,8	0.19	7,6	0.30	210,0	3000	840,0	12000	50,8	2.00	94,8	28	0,09	0.06
FC465-05	6,6	0.26	9,4	0.37	210,0	3000	840,0	12000	76,2	3.00	94,8	28	0,12	0.08
FC465-06	8,1	0.32	10,9	0.43	175,0	2500	700,0	10000	101,6	4.00	94,8†	28†	0,15	0.10
FC465-08	10,7	0.42	13,7	0.54	140,0	2000	560,0	8000	133,4	5.25	94,8†	28†	0,18	0.12
FC465-10	13,0	0.51	16,0	0.63	105,0	1500	420,0	6000	165,1	6.50	94,8†	28†	0,24	0.16
FC465-12	16,3	0.64	19,3	0.76	84,0	1200	335,0	4800	196,9	7.75	94,8†	28†	0,27	0.18
FC465-16	22,4	0.88	26,2	1.03	70,0	1000	280,0	4000	228,6	9.00	40,6†	12†	0,39	0.26
FC465-20	28,4	1.12	32,8	1.29	43,0	625	175,0	2500	406,4	16.00	40,6†	12†	0,51	0.34

Construction

Conductive extruded black PTFE tube with stainless steel single wire braid.

Operating Temperature Range

-73°C to +260°C [-100°F to +500°F]

Application

Steam, compressor discharge and most chemical applications. Not recommended for steam-cold water cycling. For more information on specific fluid applications and high temperature ratings, see pages 349-355.

† Steam 200 psi at +388°F max. Engineering information is available for specific critical temperature requirements. Contact Eaton.

‡ Maximum negative pressure for -06 and larger are suitable for hose which has suffered no external damage or kinking. If greater negative pressures are required for -06 and larger hoses, the use of an internal support coil is recommended. Use of an internal support coil in -06 and larger PTFE hose is recommended for tube support where extended or continuous service at high temperature together with low or negative pressure is expected.

For Complete Agency Listings
See pages 346-348.

Fitting Reference Page

<i>Crimp</i>	
Fitting	129
Socket Data	64
<i>Reusable</i>	
Fitting	186
Socket Data	65

2808 PTFE



# Part Number	Hose I.D.		Hose O.D.		Maximum Operating Pressure		Minimum Burst Pressure		Minimum Bend Radius		Vacuum Service		Weight of Hose	
	mm	in	mm	in	bar	psi	bar	psi	mm	in	kPa	in/Hg	Kg/m	lbs/ft
2808-08	10,7	0.42	14,7	0.58	190,0	2750	758,0	11000	117,3	4.62	94,8†	28†	0,30	0.20
2808-10	12,9	0.51	17,3	0.68	172,0	2500	689,0	10000	139,7	5.50	94,8†	28†	0,39	0.26
2808-12	16,5	0.65	20,6	0.81	121,0	1750	483,0	7000	165,1	6.50	67,7†	20†	0,45	0.30
2808-16	22,3	0.88	27,7	1.09	103,0	1500	414,0	6000	187,4	7.38	50,8†	15†	0,65	0.44
2808-20	28,4	1.12	34,3	1.35	78,0	1125	310,0	4500	279,4	11.00	50,8†	15†	0,85	0.57
2808-24	35,0	1.38	41,1	1.62	55,0	800	221,0	3200	355,6	14.00	50,8†	15†	1,04	0.70

Construction

Extruded PTFE tube with double stainless steel braids.

Operating Temperature Range

-73°C to +260°C [-100°F to +500°F]

Application

Hot air, steam and most chemical applications. Not recommended for steam-cold water cycling. For more information on specific fluid applications and high temperature ratings, see pages 400-404.

† Steam 200 psi at +388°F max. Engineering information is available for specific critical temperature requirements. Contact Eaton.

‡ Maximum negative pressure for -08 and larger are suitable for hose which has suffered no external damage or kinking. If greater negative pressures are required for -08 and larger hoses, the use of an internal support coil is recommended. Use of an internal support coil in -08 and larger PTFE hose is recommended for tube support where extended or continuous service at high temperature together with low or negative pressure is expected.

For Complete Agency Listings

See pages 397-398.

Fitting Reference Page

Reusable	Page
Fitting	175
Socket Data	65

FC469 PTFE



Conductive

# Part Number	Hose I.D.		Hose O.D.		Maximum Operating Pressure		Minimum Burst Pressure		Minimum Bend Radius		Vacuum Service		Weight of Hose	
	mm	in.	mm	in.	bar	psi	bar	psi	mm	in.	kPa	in/Hg	Kg/m	lbs/ft
FC469-06	7,6	0.30	12,2	0.48	280,0	4000	1120,0	16000	63,5	2.50	94,8†	28†	0,25	0.17
FC469-08	9,9	0.39	15,5	0.61	280,0	4000	1120,0	16000	73,2	2.88	94,8†	28†	0,36	0.24
FC469-10	12,4	0.49	18,3	0.72	245,0	3500	980,0	14000	82,6	3.25	94,8†	28†	0,43	0.29

Construction

Conductive extruded PTFE tube with stainless steel single wire braid.

Operating Temperature Range

-54°C to +204°C [-65°F to +400°F]

Application

High pressure chemical and fluid transfer. For information on specific fluid applications and high temperature ratings, see pages 400-404.

† Steam 200 psi at +388°F max. Engineering information is available for specific critical temperature requirements. Contact Eaton.

‡ Use of an internal support coil in -06 and larger PTFE hose is recommended for tube support where extended or continuous service at high temperature together with low or negative pressure is expected.

For Complete Agency Listings

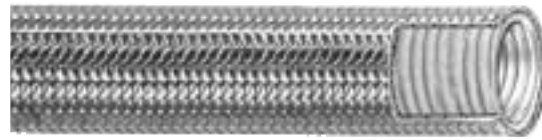
See pages 397-398.

Contact Eaton for fitting information.

SPECIALTY & TRUCK HOSE
 LOW & MEDIUM PRESSURE HOSE
 HIGH PRESSURE HOSE
 HOSE FITTINGS
 ADAPTERS & TUBE FITTINGS
 ACCESSORIES & ASSEMBLY INSTRUCTIONS
 HOSE ASSEMBLY EQUIPMENT
 APPENDICES

FC363 Convuluted PTFE

Nonconductive tube



# Part Number	Hose I.D.		Hose O.D.		Maximum Operating Pressure		Minimum Burst Pressure		Minimum Bend Radius		Minimum Kink Radius		Vacuum Service	
	mm	in	mm	in	bar	psi	bar	psi	mm	in	mm	in	kPa	in/Hg
FC363-08	13,7	0.54	18,8	0.74	87,0	1250†	350,0	5000	73,2	2.88	25,4	1.00	94,8	28
FC363-12	20,6	0.81	26,9	1.06	76,0	1100†	303,0	4400	95,3	3.75	50,8	2.00	94,8	28
FC363-16	25,4	1.00	32,5	1.28	70,0	1000†	280,0	4000	127,0	5.00	63,5	2.50	81,3	24
FC363-20	31,5	1.24	38,9	1.53	70,0	1000†	280,0	4000	158,8	6.25	88,9	3.50	67,7	20
FC363-24	38,6	1.52	46,0	1.81	52,0	750†	210,0	3000	190,5	7.50	114,3	4.50	40,6	12
FC363-32	50,8	2.00	58,7	2.31	35,0	500†	140,0	2000	254,0	10.00	152,4	6.00	16,9	5

Construction

Convuluted PTFE tube with stainless steel single wire braid cover.

Operating Temperature Range

-54°C to +204°C [-65°F to +400°F]

Application

Chemical, food, water and waste handling, and various transfer applications. Not recommended for steam-cold water cycling. For more information on specific fluid applications and high temperature ratings, see pages 349-355.

†Steam 200 psi at +388°F max.

Engineering information is available for specific critical temperature requirements. Contact Eaton.

Fitting Reference Page

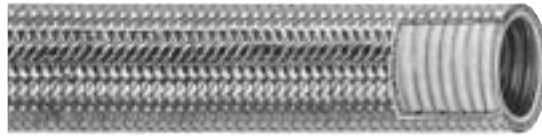
Crimp	Page
Fitting	131
Socket Data	64

For Complete Agency Listings

See pages 346-348.

FC364 Convuluted PTFE

Conductive tube



# Part Number	Hose I.D.		Hose O.D.		Maximum Operating Pressure		Minimum Burst Pressure		Minimum Bend Radius		Minimum Kink Radius		Vacuum Service	
	mm	in	mm	in	bar	psi	bar	psi	mm	in	mm	in	kPa	in/Hg
FC364-08	13,7	0.54	18,8	0.74	87,0	1250†	350,0	5000	73,2	2.88	25,4	1.00	94,8	28
FC364-12	20,6	0.81	26,9	1.06	76,0	1100†	303,0	4400	95,3	3.75	50,8	2.00	94,8	28
FC364-16	25,4	1.00	32,3	1.27	70,0	1000†	280,0	4000	127,0	5.00	63,5	2.50	81,3	24
FC364-20	31,5	1.24	38,9	1.53	70,0	1000†	280,0	4000	158,8	6.25	88,9	3.50	67,7	20
FC364-24	38,6	1.52	46,0	1.81	52,0	750†	210,0	3000	190,5	7.50	114,3	4.50	40,6	12
FC364-32	50,8	2.00	58,7	2.31	35,0	500†	140,0	2000	254,0	10.00	152,4	6.00	16,9	5
FC364-40	64,3	2.53	73,7	2.90	7,0	100	28,0	400	317,5	12.50	203,2	8.00	16,9	5
FC364-48	77,2	3.04	88,4	3.48	7,0	100	28,0	400	381,0	15.00				

Construction

Convuluted conductive PTFE tube with stainless steel wire braid cover.

Operating Temperature Range

-54°C to +204°C [-65°F to +400°F]

Application

Steam lines and fuel transfer applications where static dissipation is required. Not recommended for steam-cold water cycling. For more information on specific fluid applications and high temperature ratings, see pages 349-355.

†Steam 200 psi at +388°F max.

Engineering information is available for specific critical temperature requirements. Contact Eaton.

Fitting Reference Page

Crimp	Page
Fitting	131
Socket Data	64

For Complete Agency Listings

See pages 346-348.

FC563 Convuluted PTFE

Nonconductive tube



# Part Number	Hose I.D.		Hose O.D.		Maximum Operating Pressure		Minimum Burst Pressure		Minimum Bend Radius		Vacuum Service	
	mm	in	mm	in	bar	psi	bar	psi	mm	in	kPa	in/Hg
FC563-08	13,7	0.54	18,8	0.74	87,0	1250	350,0	5000	73,2	2.88	94,8	28
FC563-12	20,6	0.81	29,9	1.06	76,0	1100	303,0	4400	95,3	3.75	94,8	28
FC563-16	25,4	1.00	32,5	1.28	70,0	1000	280,0	4000	127,0	5.00	81,2	24
FC563-20	31,5	1.24	38,9	1.53	70,0	1000	280,0	4000	158,8	6.25	67,7	20
FC563-24	38,6	1.52	46,0	1.81	52,0	750	210,0	3000	190,5	7.50	33,9	10
FC563-32	50,8	2.00	58,7	2.31	35,0	500	140,0	2000	254,0	10.00	23,7	7

Construction

Convuluted PTFE tube with stainless steel single wire braid reinforcement and integral black polyester overbraid cover.

Operating Temperature Range

-54°C to +150°C [-65°F to +300°F]

Application

Chemical transfer and various chemical processing applications. Not recommended for steam or steam-cold water cycling. For more information on specific fluid applications and high temperature ratings, see pages 349-355.

For Complete Agency Listings

See pages 346-348.

Fitting Reference Page

Crimp	
Fitting	131
Socket Data	64

Factory crimp only.

2575 Low pressure *SOCKETLESS™* Textile Braid



# Part Number	Hose I.D.		Hose O.D.		Maximum Operating Pressure		Minimum Burst Pressure		Minimum Bend Radius		Weight of Hose	
	mm	in	mm	in	bar	psi	bar	psi	mm	in	Kg/m	lbs/ft
2575-4	6,4	0.25	11,9	0.47	17,0	250	70,0	1000	76,2	3.00	0,13	0.09
2575-6	9,7	0.38	15,8	0.62	17,0	250	70,0	1000	101,6	4.00	0,19	0.13
2575-8	12,7	0.50	19,1	0.75	17,0	250	70,0	1000	127,0	5.00	0,25	0.17
2575-10	16,0	0.63	23,1	0.91	14,0	200	56,0	800	152,4	6.00	0,30	0.20
2575-12	19,1	0.75	26,2	1.03	14,0	200	56,0	800	177,8	7.00	0,33	0.22

Construction

Synthetic rubber tube, textile braid reinforcement, black synthetic rubber cover (only).

Operating Temperature Range

-40°C to +100°C [-40°F to +212°F]

Water not to exceed +66°C [+150°F] and air not to exceed +71°C [+160°F].

Application

For gasoline, fuel and lubricating oils, air and water. Not recommended for hydraulic impulse applications and not approved for airbrake applications. For more information on specific fluid applications and high temperature ratings, see pages 349-355.

For Complete Agency Listings

See pages 346-348.

Fitting Reference Page

Reusable	
Fitting	176

FC332 AQP

Low pressure *SOCKETLESS™*

Textile Braid



# Part Number	Hose I.D.		Hose O.D.		Maximum Operating Pressure		Minimum Burst Pressure		Minimum Bend Radius		Vacuum Service		Weight of Hose	
	mm	in	mm	in	bar	psi	bar	psi	mm	in	kPa	in/Hg	Kg/m	lbs/ft
FC332-04	6,4	0.25	12,4	0.49	17,0	250	70,0	1000	76,2	3.00	94,8	28	0,12	0.08
FC332-06	9,7	0.38	16,0	0.63	17,0	250	70,0	1000	76,2	3.00	94,8	28	0,18	0.12
FC332-08	12,7	0.50	19,1	0.75	17,0	250	70,0	1000	127,0	5.00	94,8	28	0,22	0.15
FC332-10	16,0	0.63	23,1	0.91	17,0	250	70,0	1000	152,4	6.00	60,9	18	0,30	0.20
FC332-12	19,1	0.75	26,4	1.04	17,0	250	70,0	1000	177,8	7.00	60,9	18	0,42	0.28

Construction

AQP elastomer tube, textile braid reinforcement, AQP elastomer cover.

Operating Temperature Range

-40°C to +150°C [-40°F to +300°F]
Air not to exceed +121°C [+250°F] and water not to exceed +82°C [+180°F].

Application

For gasoline, fuel and lubricating oils, air and water. Not recommended for hydraulic impulse applications and not approved for airbrake applications. For more information on specific fluid applications and high temperature ratings, see pages 349-355.

For Complete Agency Listings

See pages 346-348.

Fitting Reference Page

Reusable	
Fitting	176

FC647

Low pressure *SOCKETLESS™*

Textile braid



Fire resistant meets RMA/CGA flame test requirements

# Part Number	Hose I.D.		Hose O.D.		Maximum Operating Pressure		Minimum Burst Pressure		Minimum Bend Radius		Vacuum Service		Weight of Hose	
	mm	in	mm	in	bar	psi	bar	psi	mm	in	kPa	in/Hg	Kg/m	lbs/ft
FC647-04*	6,4	0.25	13,2	0.52	25,0	360	99,0	1440	76,2	3.00	94,8	28	0,09	0.06
FC647-06*	9,7	0.38	16,8	0.66	21,0	300	84,0	1200	76,2	3.00	94,8	28	0,15	0.09
FC647-08*	12,7	0.50	20,1	0.79	21,0	300	84,0	1200	127,0	5.00	94,8	28	0,18	0.12
FC647-10*	16,0	0.63	23,4	0.92	17,0	250	70,0	1000	152,4	6.00	60,9	18	0,24	0.16
FC647-12*	19,1	0.75	26,7	1.05	17,0	250	70,0	1000	177,8	7.00	60,9	18	0,27	0.18

Construction

Synthetic rubber tube, textile braid reinforcement, polyester braided cover.

Operating Temperature Range

-40°C to +100°C [-40°F to +212°F]
Water not to exceed +66°C (+150°F),
air not to exceed +74°C (+165°F).

Application

For gasoline, fuel and lubricating oils, air and water. Not recommended for hydraulic impulse applications and not approved for airbrake applications. For more information on specific fluid applications and high temperature ratings, see pages 349-355.

**NOTE: You must insert the correct color code in the complete part number. Color codes are BLK = black, BLU = blue, BRN = brown, GRN = green, WHT = white. Example: FC647-04GRN is a green cover in dash size 4. Not all sizes are available in all colors.*

Fitting Reference Page

Reusable	
Fitting	176

For Complete Agency Listings

See pages 346-348.

2556/2565

Low pressure *SOCKETLESS*TM

Textile braid



Meets performance requirements SAE 30R2 Type 1

# Part Number	Hose I.D.		Hose O.D.		Maximum Operating Pressure		Minimum Burst Pressure		Minimum Bend Radius		Vacuum Service		Weight of Hose	
	mm	in	mm	in	bar	psi	bar	psi	mm	in	kPa	in/Hg	Kg/m	lbs/ft
2556-4	6,4	0.25	12,4	0.49	25,0	360	99,0	1440	76,2	3.00	94,8	28	0,12	0.08
2556-6	9,7	0.38	15,7	0.62	21,0	300	84,0	1200	76,2	3.00	94,8	28	0,18	0.12
2556-8	12,7	0.50	19,1	0.75	21,0	300	84,0	1200	127,0	5.00	94,8	28	0,24	0.16
2556-10	16,0	0.63	23,1	0.91	17,0	250	70,0	1000	152,4	6.00	61,0	18	0,31	0.21
2556-12	19,1	0.75	26,2	1.03	17,0	250	70,0	1000	177,8	7.00	61,0	18	0,37	0.25
2565-4	6,4	0.25	12,7	0.50	21,0	300	87,0	1250	57,2	2.25	67,7	20	0,13	0.09
2565-6	9,7	0.38	16,0	0.63	17,0	250	70,0	1000	76,2	3.00	67,7	20	0,16	0.11
2565-8	12,7	0.50	19,8	0.78	14,0	200	52,0	750	95,3	3.75	33,9	10	0,25	0.17
2565-10	16,0	0.63	24,6	0.97	12,0	175	49,0	700	120,7	4.75	33,9	10	0,42	0.28
2565-12	19,1	0.75	27,7	1.09	8,5	125	35,0	500	139,7	5.50	33,9	10	0,45	0.30

Construction

Synthetic rubber tube, textile braid reinforcement, synthetic rubber cover.

Operating Temperature Range

2556: -40°C to +100°C [-40°F to +212°F]. Water not to exceed +66°C [+150°F], air not to exceed +160°C [+71°F].

2565: -54°C to +121°C [-65°F to +250°F]. Water not to exceed +66°C [+150°F], air not to exceed +74°C [+165°F].

Application

For gasoline, fuel and lubricating oils, air and water. Not recommended for hydraulic impulse applications and not approved for airbrake applications. For more information on specific fluid applications and high temperature ratings, see pages 349-355.

2565 is a low-temperature synthetic rubber covered MIL-DTL-13444 Type 1, Class A hose.

For Complete Agency Listings

See pages 346-348.

Fitting Reference Page

Reusable	
Fitting	176

FC619

Flexible 1/2 SAE bend

Wire inserted suction



Exceeds SAE 100R4

# Part Number	Hose I.D.		Hose O.D.		Maximum Operating Pressure		Minimum Burst Pressure		Minimum Bend Radius		Vacuum Service		Weight of Hose	
	mm	in	mm	in	bar	psi	bar	psi	mm	in	kPa	in/Hg	Kg/m	lbs/ft
FC619-12	19,1	0.75	30,7	1.21	21,0	300†	84,0	1200	63,5	2.50	94,8	28	0,68	0.46
FC619-16	25,4	1.00	37,6	1.48	17,0	250†	70,0	1000	76,2	3.00	94,8	28	0,83	0.56
FC619-20	31,8	1.25	44,5	1.75	14,0	200†	56,0	800	102,0	4.00	94,8	28	1,16	0.78
FC619-24	38,1	1.50	51,8	2.04	10,5	150†	42,0	600	127,0	5.00	94,8	28	1,49	1.00
FC619-32	50,8	2.00	64,8	2.55	7,0	100†	28,0	400	152,4	6.00	94,8	28	1,83	1.23
FC619-40	63,5	2.50	79,2	3.12	4,0	62	17,0	250	355,6	14.00	94,8	28	2,35	1.58
FC619-48	76,2	3.00	95,3	3.75	4,0	62	16,0	225	457,2	18.00	94,8	28	3,36	2.26

Construction

Synthetic rubber tube, reinforcement consisting of a helical wire between two textile reinforcement layers and synthetic rubber cover.

Operating Temperature Range

-40°C to +135°C [-40°F to +275°F]

Application

Suction and transfer applications for petroleum hydraulic fluids, fuel, lubricating oils, gasoline, water and many other industrial fluids. For more information on specific fluid applications and high temperature ratings, see pages 349-355.

† Maximum working pressure for band clamp type fittings is 3,4 bar [50 psi].

NOTE: -40 and -48 sizes require special tooling for crimp fittings. Contact Eaton for information.

For Complete Agency Listings

See pages 346-348.

Fitting Reference Page

Crimp	
OTC	66
TTC	66
-40, -48	133
Socket Data	64
Reusable	
Nipple	66
Clamps	184

SPECIALTY & TRUCK HOSE
 LOW & MEDIUM PRESSURE HOSE
 HIGH PRESSURE HOSE
 HOSE FITTINGS
 ADAPTERS & TUBE FITTINGS
 ACCESSORIES & ASSEMBLY INSTRUCTIONS
 EGEHOSE ASSEMBLY EQUIPMENT
 APPENDICIES

2661 AQP

Wire inserted suction

Exceeds SAE 100R4



#	Hose I.D.		Hose O.D.		Maximum Operating Pressure		Minimum Burst Pressure		Minimum Bend Radius		Vacuum Service		Weight of Hose	
	mm	in	mm	in	bar	psi	bar	psi	mm	in	kPa	in/Hg	Kg/m	lbs/ft
2661-12	19,1	0.75	31,8	1.25	21,0	300†	84,0	1200	125,0	5.00	94,8	28	0,62	0,42
2661-16	25,4	1.00	38,1	1.50	17,0	250†	70,0	1000	150,0	6.00	94,8	28	0,74	0,50
2661-20	31,8	1.25	45,7	1.80	14,0	200†	56,0	800	200,0	8.00	94,8	28	1,34	0,90
2661-24	38,1	1.50	52,3	2.06	10,5	150†	42,0	600	255,0	10.00	94,8	28	1,68	1,13
2661-32	50,8	2.00	64,8	2.55	7,0	100†	28,0	400	300,0	12.00	94,8	28	1,93	1,30
2661-40	63,5	2.50	78,2	3.08	4,0	62	16,0	225	355,0	14.00	94,8	28	2,56	1,72
2661-48‡	76,2	3.00	90,9	3.58	4,0	62	16,0	225	460,0	18.00	94,8	28	2,92	1,96
2661-64‡	101,6	4.00	119,1	4.69	3,5	50	14,0	200	610,0	24.00	94,8	28	4,58	3,08

Construction

AQP elastomer tube, reinforcement consisting of a helical wire between two textile braids and two AQP elastomer cover.

Operating Temperature Range

-40°C to +150°C [-40°F to +300°F]

Application

Suction and transfer applications for petroleum and fire resistant hydraulic fluids, fuel, lubricating oils, gasoline, water and many other industrial fluids. For more information on specific fluid applications and high temperature ratings, see pages 349-355.

† Maximum working pressure for band clamp type fittings is 3,4 bar [50 psi].

‡ Sold as bulk hose only.

For Complete Agency Listings

See pages 346-348.

Fitting Reference Page

<i>Crimp</i>	
OTC	66
TTC	66
-40, -48	133
Socket Data	64
<i>Reusable</i>	
Nipple	66
Clamps	184

FC466

Textile braid

Exceeds SAE 100R6 performance*



#	Hose I.D.		Hose O.D.		Maximum Operating Pressure		Minimum Burst Pressure		Minimum Bend Radius		Vacuum Service		Weight of Hose	
	mm	in	mm	in	bar	psi	bar	psi	mm	in	kPa	in/Hg	Kg/m	lbs/ft
FC466-04	6,4	0.25	12,2	0.48	28,0	400	112,0	1600	63,5	2.50	94,8	28	0,09	0,06
FC466-06	9,7	0.38	15,7	0.62	28,0	400	112,0	1600	75,0	3.00	94,8	28	0,15	0,10
FC466-08	12,7	0.50	19,1	0.75	28,0	400	112,0	1600	100,0	4.00	94,8	28	0,19	0,13
FC466-10	16,0	0.63	23,1	0.91	24,0	350	98,0	1400	125,0	5.00	60,9	18	0,27	0,18
FC466-12	19,1	0.75	26,2	1.03	24,0	350	98,0	1400	150,0	7.00	60,9	18	0,28	0,19

Construction

Synthetic rubber tube, textile braid reinforcement and polyester braid cover.

Operating Temperature Range

-40°C to +100°C [-40°F to +212°F], Air not to exceed -71°C [+160°F].

Application

For gasoline, fuel, lubricating oils, air and water. Not approved for airbrake applications. For more information on specific fluid applications and high temperature ratings, see pages 349-355.

For Complete Agency Listings

See pages 346-348.

* All sizes except -12

Fitting Reference Page

<i>Crimp</i>	
OTC	66
Skive Nipple**	66
Socket Data	64

**No skiving required.

FC498 AQP Textile braid

Exceeds SAE 100R6



# Part Number	Hose I.D.		Hose O.D.		Maximum Operating Pressure		Minimum Burst Pressure		Minimum Bend Radius		Vacuum Service		Weight of Hose	
	mm	in	mm	in	bar	psi	bar	psi	mm	in	kPa	in/Hg	Kg/m	lbs/ft
FC498-04	6,4	0.25	12,7	0.50	28,0	400	112,0	1600	63,5	2.50	94,8	28	0,12	0.08
FC498-06	9,7	0.38	15,7	0.62	28,0	400	112,0	1600	75,0	3.00	94,8	28	0,19	0.13
FC498-08	12,7	0.50	19,1	0.75	28,0	400	112,0	1600	100,0	4.00	94,8	28	0,22	0.15
FC498-10	16,0	0.63	23,1	0.91	24,0	350	98,0	1400	125,0	5.00	60,9	18	0,30	0.20
FC498-12	19,1	0.75	26,2	1.03	24,0	350	98,0	1400	150,0	6.00	60,9	18	0,42	0.28

Construction

AQP elastomer tube, textile braid reinforcement, blue AQP elastomer cover.

Operating Temperature Range
-40°C to +150°C [-40°F to +300°F]

Application

Low pressure return lines in hydraulic systems. For more information on specific fluid applications and high temperature ratings, see pages 349-355.

For Complete Agency Listings
See pages 346-348.

Fitting Reference Page

Crimp	Page
OTC	66
Skive Nipple**	66
Socket Data	64

**No skiving required.

FC598 AQP Textile braid

Exceeds SAE 100R6



# Part Number	Hose I.D.		Hose O.D.		Maximum Operating Pressure		Minimum Burst Pressure		Minimum Bend Radius		Vacuum Service		Weight of Hose	
	mm	in	mm	in	bar	psi	bar	psi	mm	in	kPa	in/Hg	Kg/m	lbs/ft
FC598-04	6,4	0.25	12,2	0.50	28,0	400	112,0	1600	63,5	2.50	94,8	28	0,12	0.08
FC598-06	9,7	0.38	15,7	0.62	28,0	400	112,0	1600	75,0	3.00	94,8	28	0,19	0.13
FC598-08	12,7	0.50	19,1	0.78	28,0	400	112,0	1600	100,0	4.00	94,8	28	0,22	0.15
FC598-10	16,0	0.63	23,1	0.91	24,0	350	98,0	1400	125,0	5.00	60,9	18	0,30	0.20
FC598-12	19,1	0.75	26,2	1.03	24,0	350	98,0	1400	150,0	6.00	60,9	18	0,42	0.28

Construction

AQP elastomer tube, textile braid reinforcement, black AQP elastomer cover.

Operating Temperature Range
-40°C to +150°C [-40°F to +300°F]

Application

Low pressure return lines in hydraulic systems. For more information on specific fluid applications and high temperature ratings, see pages 349-355.

For Complete Agency Listings
See pages 346-348.

Fitting Reference Page

Crimp	Page
OTC	66
Skive Nipple**	66
Socket Data	64

**No skiving required.

2580 Double textile braid

MIL-H-24136/3



# Part Number	Hose I.D.		Hose O.D.		Maximum Operating Pressure		Minimum Burst Pressure		Minimum Bend Radius		Weight of Hose	
	mm	in	mm	in	bar	psi	bar	psi	mm	in	Kg/m	lbs/ft
2580-4	4,8	0.19	13,2	0.52	70,0	1000	280,0	4000	76,2	3.00	0,18	0.12
2580-5	6,4	0.25	14,7	0.58	56,0	800	224,0	3200	85,9	3.38	0,22	0.15
2580-6	7,9	0.31	17,3	0.68	45,0	650	180,0	2600	101,6	4.00	0,25	0.17
2580-8	10,4	0.41	19,6	0.77	43,0	625	175,0	2500	117,3	4.62	0,28	0.19
2580-10	12,7	0.50	23,4	0.92	42,0	600	168,0	2400	139,7	5.50	0,42	0.28
2580-12	16,0	0.63	27,4	1.08	38,0	550	152,0	2200	165,1	6.50	0,51	0.34
2580-16	22,4	0.88	31,5	1.24	35,0	500	140,0	2000	187,5	7.38	0,54	0.36
2580-20	28,5	1.12	38,1	1.50	31,0	450	124,0	1800	228,6	9.00	0,64	0.43
2580-24	45,7	1.38	44,5	1.75	28,0	400	112,0	1600	266,7	10.50	0,76	0.51
2580-32	46,0	1.81	56,4	2.22	24,0	350	98,0	1400	336,6	13.25	1,12	0.75

Construction

Synthetic rubber tube, double textile braid reinforcement and synthetic rubber cover. For larger dash sizes, see Catalog A-MM-MC-0001-E.

Application

For water, gasoline, and fuel oil. For more information on specific fluid applications and high temperature ratings, see pages 349-355.

For Complete Agency Listings

See pages 346-348.

Fitting Reference Page

<i>Reusable</i>	
Fitting	136
Socket Data	65

Operating Temperature Range

-40°C to +100°C [-40°F to +212°F].

2583 Double textile braid

SAE 100R3



# Part Number	Hose I.D.		Hose O.D.		Maximum Operating Pressure		Minimum Burst Pressure		Minimum Bend Radius		Weight of Hose	
	mm	in	mm	in	bar	psi	bar	psi	mm	in	Kg/m	lbs/ft
2583-4	6,4	0.25	14,5	0.57	87,0	1250	350,0	5000	76,2	3.00	0,18	0.12
2583-6	9,7	0.38	19,1	0.75	78,0	1125	315,0	4500	101,6	4.00	0,33	0.22
2583-8	12,7	0.50	23,9	0.94	70,0	1000	280,0	4000	127,0	5.00	0,39	0.26
2583-12	19,1	0.75	31,8	1.25	52,0	750	210,0	3000	152,4	6.00	0,71	0.48
2583-16	25,4	1.00	38,1	1.50	39,0	565	157,0	2250	203,2	8.00	0,76	0.51
2583-20	31,8	1.25	44,5	1.75	26,0	375	105,0	1500	254,0	10.00	1,09	0.73

Construction

Synthetic rubber tube, double textile braid reinforcement and synthetic rubber cover.

Application

For hydraulics, fuel, lubricating oils, gasoline, air and water. Not approved for airbrake applications. For more information on specific fluid applications and high temperature ratings, see pages 349-355.

For Complete Agency Listings

See pages 346-348.

Fitting Reference Page

<i>Crimp</i>	
OTC	66

Operating Temperature Range

-40°C to +100°C [-40°F to +212°F]. Air not to exceed +71°C [+161°F].

SPECIALTY & TRUCK HOSE

LOW & MEDIUM PRESSURE HOSE

HIGH PRESSURE HOSE

HOSE FITTINGS

ADAPTERS & TUBE FITTINGS

ACCESSORIES & ASSEMBLY INSTRUCTIONS

HOSE ASSEMBLY EQUIPMENT

APPENDICES

FC211

Single wire braid

SAE 100R1AT



# Part Number	Hose I.D.		Hose O.D.		Maximum Operating Pressure		Minimum Burst Pressure		Minimum Bend Radius		Weight of Hose	
	mm	in	mm	in	bar	psi	bar	psi	mm	in	Kg/m	lbs/ft
FC211-04	6,4	0.25	13,5	0.53	192,0	2750	770,0	11000	100,0	4.00	0,22	0.15
FC211-06	9,7	0.38	17,5	0.69	157,0	2250	630,0	9000	125,0	5.00	0,36	0.24
FC211-08	12,7	0.50	20,6	0.81	140,0	2000	560,0	8000	180,0	7.00	0,43	0.29
FC211-12	19,1	0.75	27,7	1.09	87,0	1250	350,0	5000	241,3	9.50	0,68	0.46
FC211-16	25,4	1.00	35,8	1.41	70,0	1000	280,0	4000	304,8	12.00	1,19	0.80

Construction

Synthetic rubber tube, single wire braid reinforcement and synthetic rubber cover.

Operating Temperature Range

-40°C to +100°C [-40°F to +212°F]

Application

Hydraulic system service with petroleum and water-base fluids, for general industrial service. For more information on specific fluid applications and high temperature ratings, see pages 349-355.

For Complete Agency Listings

See pages 346-348.

Fitting Reference Page

Crimp	
TTC	66
Skive Nipple	66
Socket Data	64
Reusable	
Fitting	148
Socket Data	65

2681

HI-IMPULSE®

Single wire braid

Meets or exceeds:

SAE 100R1A, EN853 1ST, ISO 1436-1 Type 1ST



# Part Number	Hose I.D.		Hose O.D.		Maximum Operating Pressure		Minimum Burst Pressure		Minimum Bend Radius		Weight of Hose	
	mm	in	mm	in	bar	psi	bar	psi	mm	in	Kg/m	lbs/ft
2681-3	4,8	0.19	12,7	0.50	280,0	4000	1120,0	16000	88,9	3.50	0,19	0.13
2681-4	6,4	0.25	15,8	0.62	227,0	3250	897,0	13000	100,0	4.00	0,28	0.19
2681-5	7,9	0.31	17,5	0.69	227,0	3250	897,0	13000	115,0	4.50	0,40	0.27
2681-6	9,7	0.38	19,8	0.78	210,0	3000	840,0	12000	125,0	5.00	0,45	0.30
2681-8	12,7	0.50	23,1	0.91	175,0	2500	700,0	10000	180,0	7.00	0,58	0.39
2681-10	16,0	0.63	26,2	1.03	140,0	2000	560,0	8000	200,0	8.00	0,68	0.46
2681-12	19,1	0.75	30,2	1.19	124,0	1800	497,0	7200	240,0	9.50	0,79	0.53
2681-16	25,4	1.00	38,1	1.50	90,0	1300	359,0	5200	300,0	12.00	1,19	0.80
2681-20	31,8	1.25	46,0	1.81	60,0	900	248,0	3600	420,0	16.50	1,46	0.98
2681-24	38,1	1.50	52,3	2.06	49,0	700	193,0	2800	500,0	20.00	1,67	1.12
2681-32	50,8	2.00	65,5	2.58	42,0	600	168,0	2400	630,0	25.00	2,43	1.63

Construction

Synthetic rubber tube, single wire braid reinforcement and synthetic rubber cover.

Operating Temperature Range

-40°C to +100°C [-40°F to +212°F]

Application

Hydraulic system service with petroleum and water-base fluids, for general industrial service. For more information on specific fluid applications and high temperature ratings, see pages 349-355.

For Complete Agency Listings

See pages 346-348.

Fitting Reference Page

Crimp	
Skive Nipple	66
Socket Data	64