



Steering Cylinder

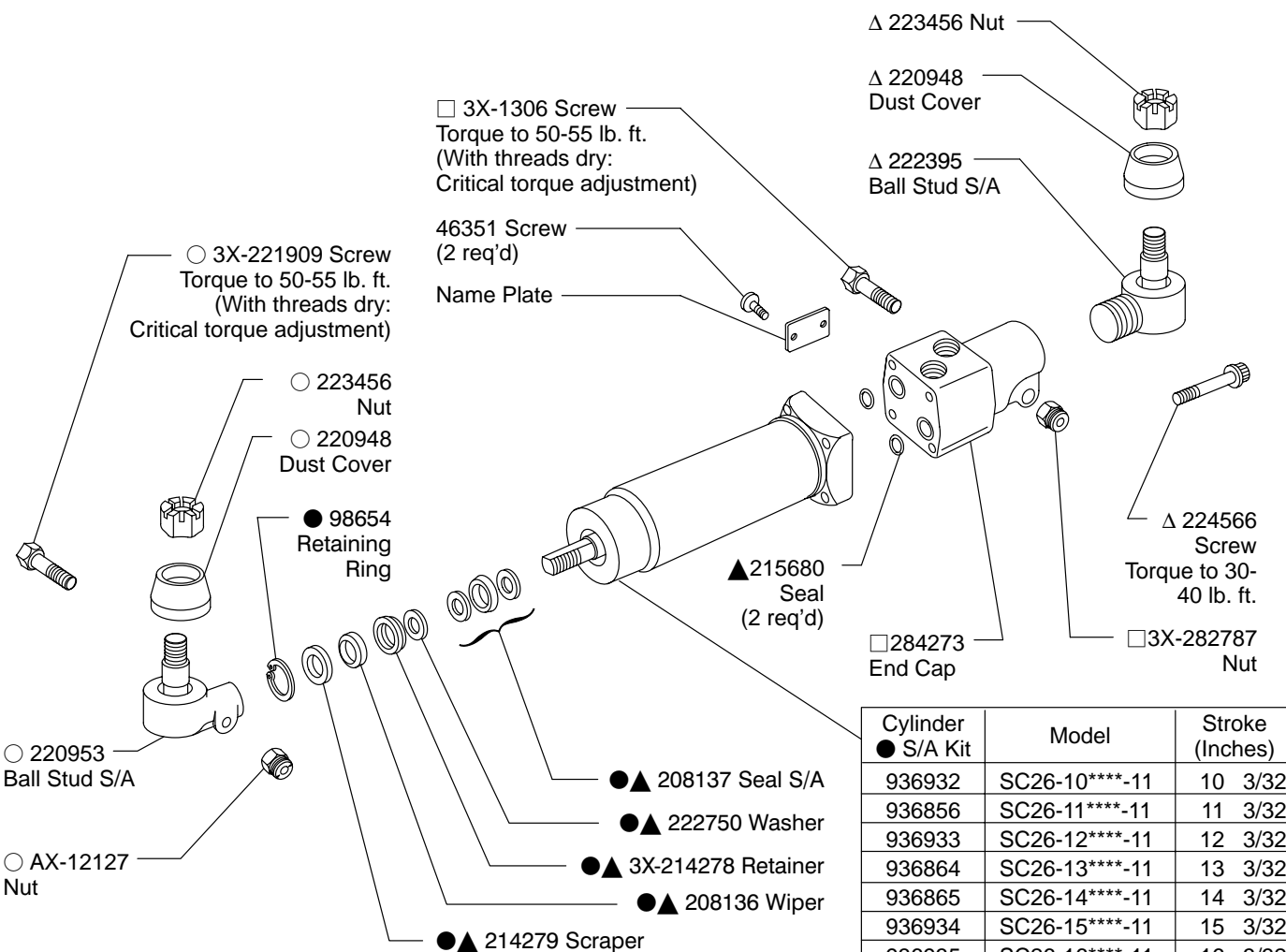
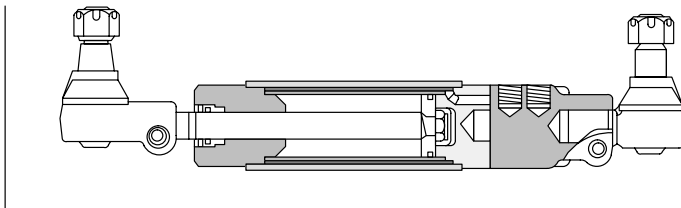
SC26-*****-11



CAUTION

The 922941, 1 1/8" end cap kit is no longer recommended for use on Vickers SC26 ball stud models. Replace with a 1 3/8" end cap kit 922922 and a 1 3/8" ball stud kit 922692.

Check unit model number. The 922941, 1 1/8" end cap kit will be provided as a service item for models other than Vickers SC26 ball stud models.



▲ Service all units with F3 Seal Kit 922629

□ Included in 922922 End Cap Kit

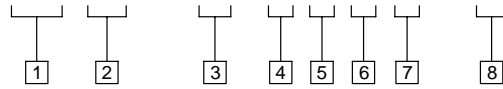
Δ Included in 922692 Head End Ball Stud Kit

○ Included in 922787 Rod End Ball Stud Kit

Cylinder S/A Kit	Model	Stroke (Inches)
936932	SC26-10****-11	10 3/32
936856	SC26-11****-11	11 3/32
936933	SC26-12****-11	12 3/32
936864	SC26-13****-11	13 3/32
936865	SC26-14****-11	14 3/32
936934	SC26-15****-11	15 3/32
936935	SC26-16****-11	16 3/32
936936	SC26-17****-11	17 3/32
936866	SC26-18****-11	18 3/32
936867	SC26-19****-11	19 3/32
936868	SC26-20****-11	20 3/32
936869	SC26-21****-11	21 3/32
936870	SC26-22****-11	22 3/32
936871	SC26-23****-11	23 3/32
936837	SC26-24****-11	24 3/32

Model Code

SC 26 - ** * * * * - 11



1 Steering Cylinder

2 Cylinder Bore Diameter

(1/8 inch increments)
26 - 3.125 inch diameter

3 Stroke
(Inches)

- 10 - 10 3/32 inch
- 11 - 11 3/32 inch
- 12 - 12 3/32 inch
- 14 - 14 3/32 inch
- 15 - 15 3/32 inch
- 16 - 16 3/32 inch
- 17 - 17 3/32 inch
- 18 - 18 3/32 inch
- 19 - 19 3/32 inch
- 20 - 20 3/32 inch
- 21 - 21 3/32 inch
- 22 - 22 3/32 inch
- 23 - 23 3/32 inch
- 24 - 24 3/32 inch

4 Rod End Mounting

- N** - No attachments
- B** - Horizontal ball stud S/A -
Nylon seat

5 End Cap

- N** - No end cap
- 2** - 20 USgpm 1 3/8 -12
UNF female thread

6 Head End Mounting

- N** - No attachments
- B** - Horizontal ball stud S/A -
Nylon seat

7 Head End Mounting Position

- N** - No attachments or position
- W** - Opposite port connections
- X** - 90° counterclockwise from
port connections
- Y** - In line with port connections
- Z** - 90° clockwise from port
connections

8 Design

For satisfactory service life of these components, use full flow filtration to provide fluid which meets ISO cleanliness code 20/18/15 or cleaner. Selections from Eaton OFP, OFR and OFRS filter series are recommended.

Printed in U.S.A.