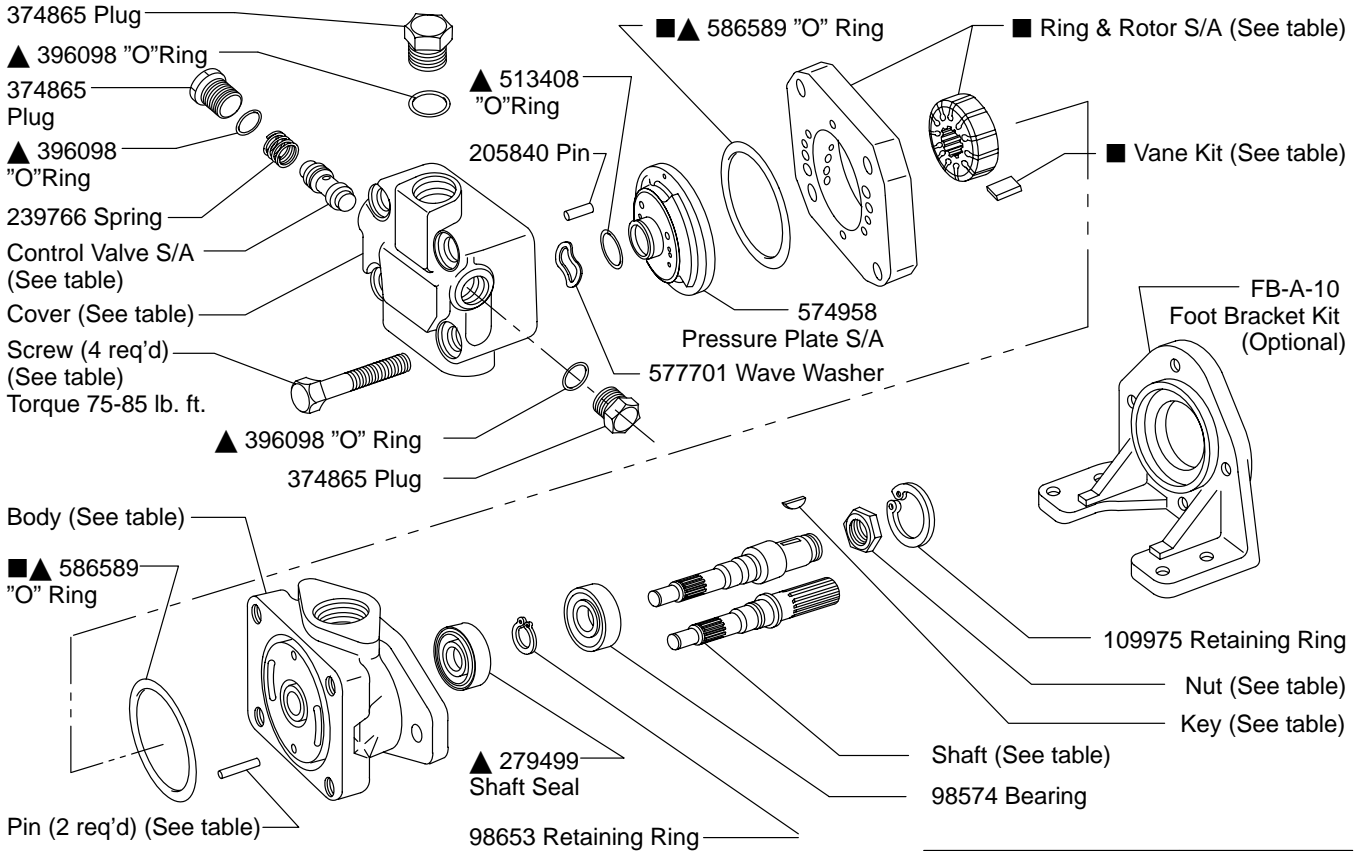


Vane Pumps



Vane Pump

V20NF-***T-***-22



- ▲ - Included in Seal Kit 920371
- - Included in Cartridge Kit

| Model | Body |
|----------|--------|
| V20NF-1D | 583170 |
| V20NF-4D | 583172 |
| V20NF-1F | 297228 |
| V20NF-1P | 280689 |
| V20NF-4P | 308628 |
| V20NF-1S | 294266 |

| Model | Cover |
|---------------------|--------|
| V20NF-***T-***2-22 | 452272 |
| V20NF-***T-***3-22 | 452240 |
| V20NF-***T-***4-22 | 452242 |
| V20NF-***T-***5-22 | 452069 |
| V20NF-***T-***6-22 | 452244 |
| V20NF-***T-***7-22 | 574959 |
| V20NF-***T-***8-22 | 452071 |
| V20NF-***T-***9-22 | 478133 |
| V20NF-***T-***10-22 | 452274 |

| Model | Control Valve S/A |
|--------------------|-------------------|
| V20NF-***T-***C-22 | 232794 |
| V20NF-***T-***D-22 | 232795 |
| V20NF-***T-***E-22 | 232796 |
| V20NF-***T-***F-22 | 232797 |
| V20NF-***T-***G-22 | 232798 |
| V20NF-***T-***H-22 | 232799 |
| V20NF-***T-***J-22 | 233019 |
| V20NF-***T-***K-22 | 233020 |
| V20NF-***T-***L-22 | 266200 |

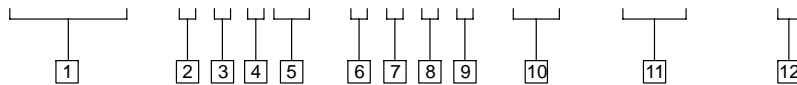
| Model | Pin | Screw | ■ Vane Kit | ■ Ring & Rotor S/A | Cartridge Kit |
|--------------|-------|-------|------------|--------------------|---------------|
| V20NF-***5T | 2161 | 11165 | 923651 | 503157 | 923656 |
| V20NF-***6T | | | | 452235 | 923657 |
| V20NF-***7T | | | | 452261 | 923658 |
| V20NF-***8T | 2478 | 9431 | 923652 | 574954 | 923659 |
| V20NF-***9T | | | | 452264 | 923660 |
| V20NF-***10T | 16662 | 96168 | 923653 | 452267 | 923661 |
| V20NF-***11T | | | | 574945 | 923662 |
| V20NF-***12T | | | | 452270 | 923663 |
| V20NF-***13T | 9603 | 96168 | 923654 | 452245 | 923664 |

| Model | Shaft | Key | Nut |
|----------------|--------|-------|--------|
| V20NF-***T-1 | 280372 | 5881 | _____ |
| V20NF-***T-3 | 280504 | 1615 | 132260 |
| V20NF-***T-6 | 297330 | 1609 | _____ |
| V20NF-***T-10 | 324043 | 1609 | _____ |
| V20NF-***T-11 | 280515 | _____ | _____ |
| V20NF-***T-38 | 328096 | _____ | _____ |
| V20NF-***T-101 | 478142 | 5881 | _____ |
| V20NF-***T-103 | 478136 | 1615 | 132260 |
| V20NF-***T-138 | 478122 | _____ | _____ |
| V20NF-***T-203 | 502682 | 1615 | 132260 |
| V20NF-***T-238 | 502235 | _____ | _____ |



Model Code

V20NF - * * * T - * * * * - 22 - (* * *) - (L)



1 Model Series

V20NF - Vane pump, 20 size with flow control valve cover & internal drain

2 Pump Mounting

- 1 - 2 Bolt
- 2 - Foot mount - body inlet port @ 12 o'clock (viewed from shaft end)
- 3 - Power take-off
- 4 - Face
- 23 - Body inlet port @ 3 o'clock
- 26 - Body inlet port @ 6 o'clock
- 29 - Body inlet port @ 9 o'clock

3 Inlet Body Port

- D - 1.312-12 (SAE straight thread)
- F - 2 bolt flange
- P - 1.25 N.P.T.
- S - 1.625-12 (straight thread)

4 Ring Capacity @ 1200 RPM

- 5 - 5 GPM 8 - 8 GPM 11 - 11 GPM
- 6 - 6 GPM 9 - 9 GPM 12 - 12 GPM
- 7 - 7 GPM 10 - 10 GPM 13 - 13 GPM

5 Flow Control Cover

(Pressure port - .750-16 straight thread)

6 Shaft Extention Type

- For 10-13 GPM units:
- 1 - Straight keyed (standard)
 - 3 - Threaded
 - 6 - Straight Stub
 - 10 - Threaded Straight Stub
 - 11 - Splined
 - 38 - Splined

- For 7-9 GPM units:
- 101 - Straight keyed (standard)
 - 103 - Threaded
 - 138 - Splined

- For 5-6 GPM units:
- 203 - Threaded
 - 238 - Splined

7 Outlet pressure port position
(Viewed from cover end)

- A - Opposite inlet port
- B - 90° CCW from inlet port
- C - In line with inlet port
- D - 90° CW from inlet port

8 Flow Rate thru Orifice in Cover

- 2 - 2 GPM 7 - 7 GPM
- 3 - 3 GPM 8 - 8 GPM
- 4 - 4 GPM 9 - 9 GPM
- 5 - 5 GPM 10 - 10 GPM
- 6 - 6 GPM

9 Control Valve Pressure Setting

- C - 750 PSI H - 2000 PSI
- D - 1000 PSI J - 2250 PSI
- E - 1250 PSI K - 2500 PSI
- F - 1500 PSI L - 2750 PSI
- G - 1750 PSI

10 Design

11 Special Suffix Feature

(Omit if not required.)

12 Left Hand Rotation

(Viewed from shaft end)

(Omit for right hand rotation.)

For satisfactory service life of these components, use full flow filtration to provide fluid which meets ISO cleanliness code 18/15 or cleaner. Selections from Eaton OFF, OFR and OFRS filter series are recommended.