

# Pressure Relief

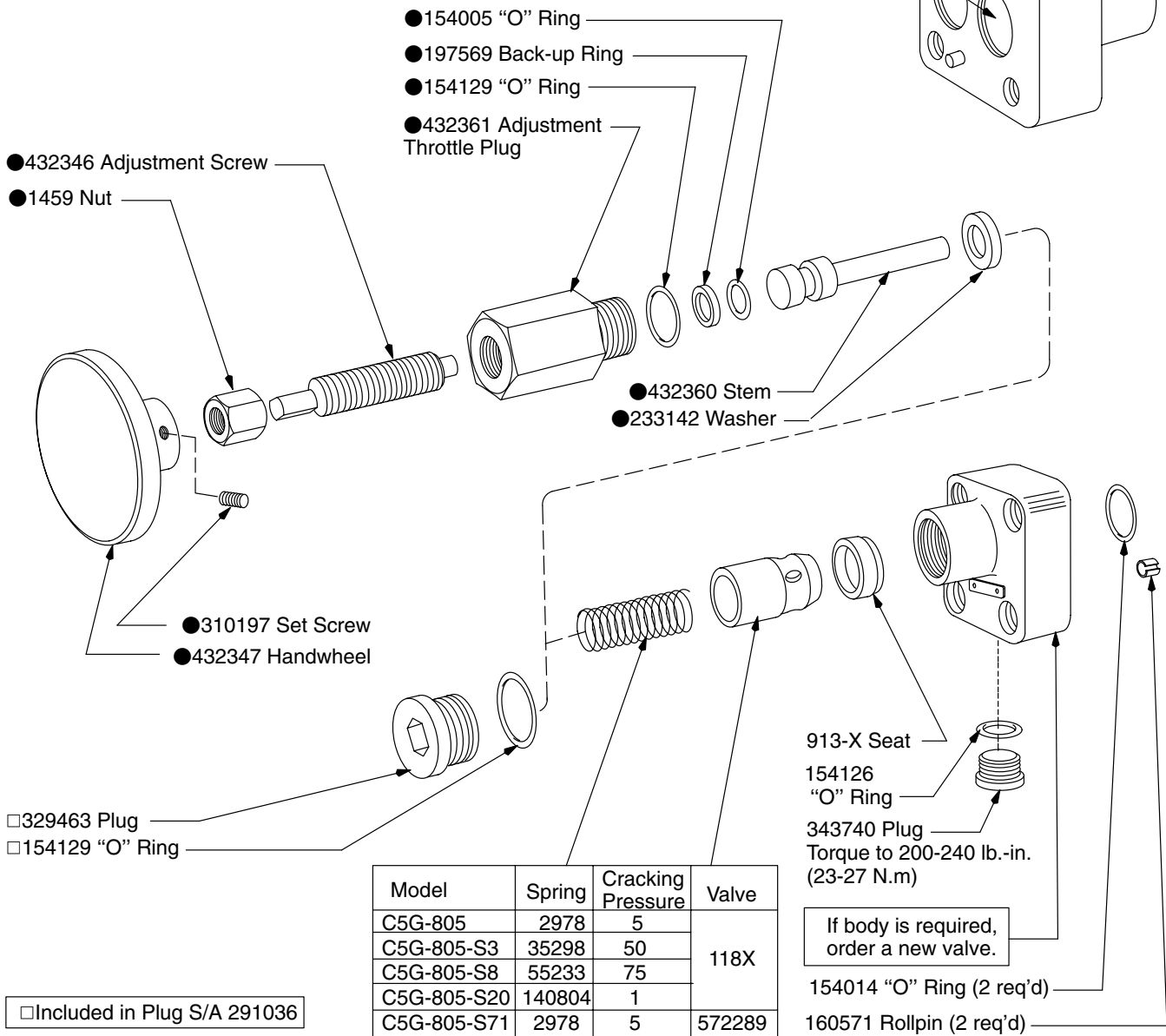


## 3/8 Inch Manifold Mounted Check Valve

### C5G-805-(S\*)

● These parts used on -S71 models only.

**CAUTION**  
Be certain the valve is connected properly. Flow must enter here.



For satisfactory service life of these components, use full flow filtration to provide fluid which meets ISO cleanliness code 16/13 or cleaner. Selections from pressure, return, and in-line filter series are recommended.