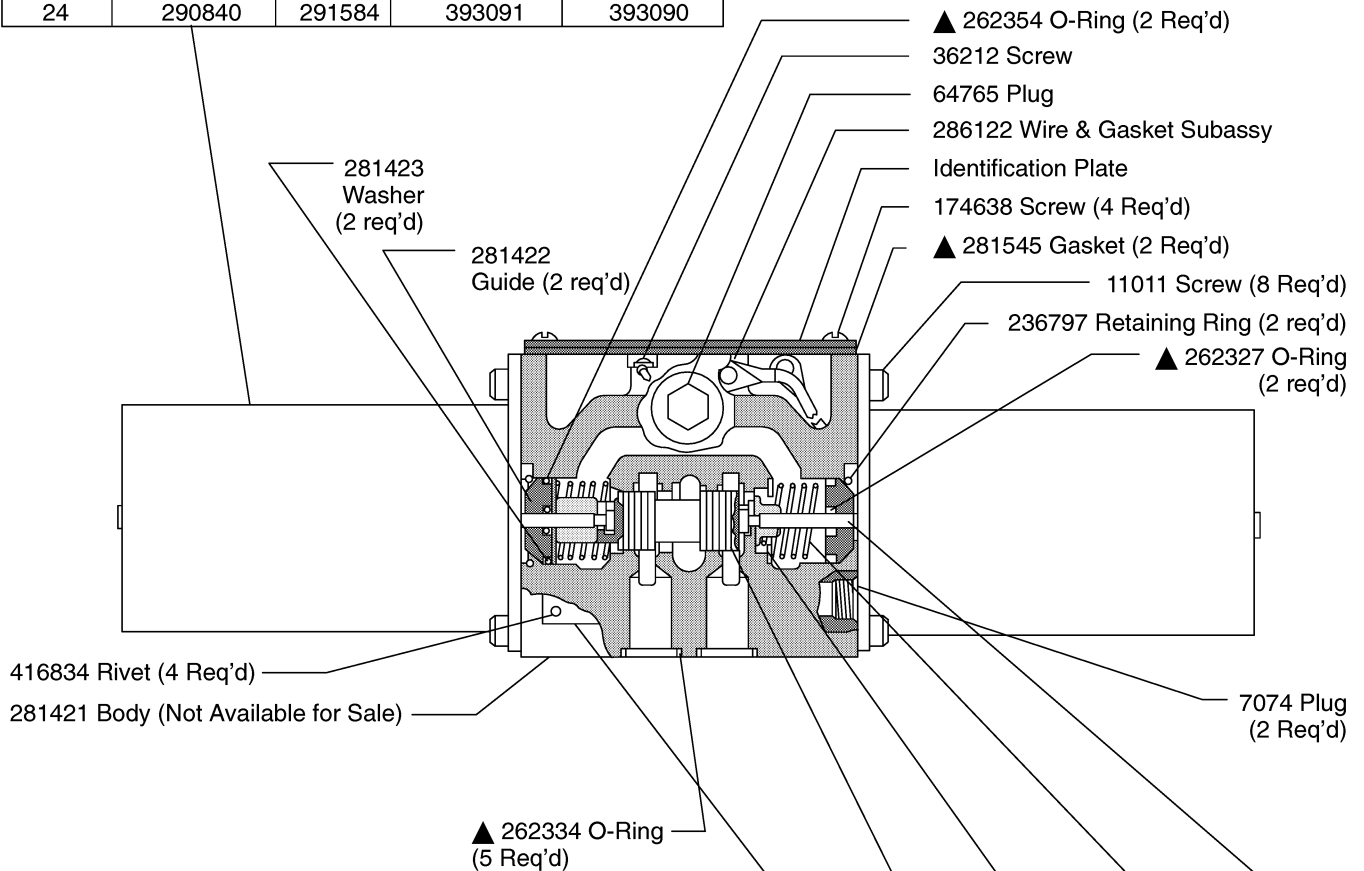




## Spring Centered Solenoid Controlled Directional Valves DG4S4-01\*C-\*DC-50

Voltage DC	Solenoid S/A (2 Req'd)	Coil S/A (2 Req'd)	Solenoid S/A F3 (2 Req'd)	Coil S/A F3 (2 Req'd)
12	290839	291583	751283	751284
24	290840	291584	393091	393090

For additional Solenoid S/A see I-3499-S



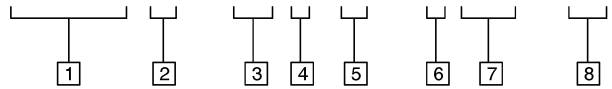
Model	Diagram Plate	Spool	Washer (2 Req'd)	Spring (2 Req'd)	Push Pin (2 Req'd)
DG4S4-010C-*DC-50	290341	213230	211846	290072	213268
DG4S4-012C-*DC-50	290343	213231			
DG4S4-013C-*DC-50	290344	239903			
DG4S4-016C-*DC-50	290345	213232			
DG4S4-017C-*DC-50	290346	236624	283637	217323	290264
DG4S4-018C-*DC-50	290340	235637			
DG4S4-0133C-*DC-50	577484	236615			

▲ Included in F3 Seal Kit 919359



# Model Code

**DG4S 4 - 01 \* C - \* DC - 50**



**1 Model Series**

**DG4S** - Directional valve, subplate or manifold mounted, solenoid operated, sliding spool

**2 Flow Directions**

4 - 4 way

**3 Series**

**4 Spool Type**

**5 Spring Centered**

**6 Solenoid Voltage**

**7 DC Solenoid**

**8 Design**

Eaton  
14615 Lone Oak Road  
Eden Prairie, MN 55344  
USA  
Tel: 952 937-9800  
Fax: 952 974-7722  
www.hydraulics.eaton.com

Eaton  
20 Rosamond Road  
Footscray  
Victoria 3011  
Australia  
Tel: (61) 3 9319 8222  
Fax: (61) 3 9318 5714

Eaton  
46 New Lane, Havant  
Hampshire PO9 2NB  
England  
Tel: (44) 23 92 486 451  
Fax: (44) 23 92 487 110