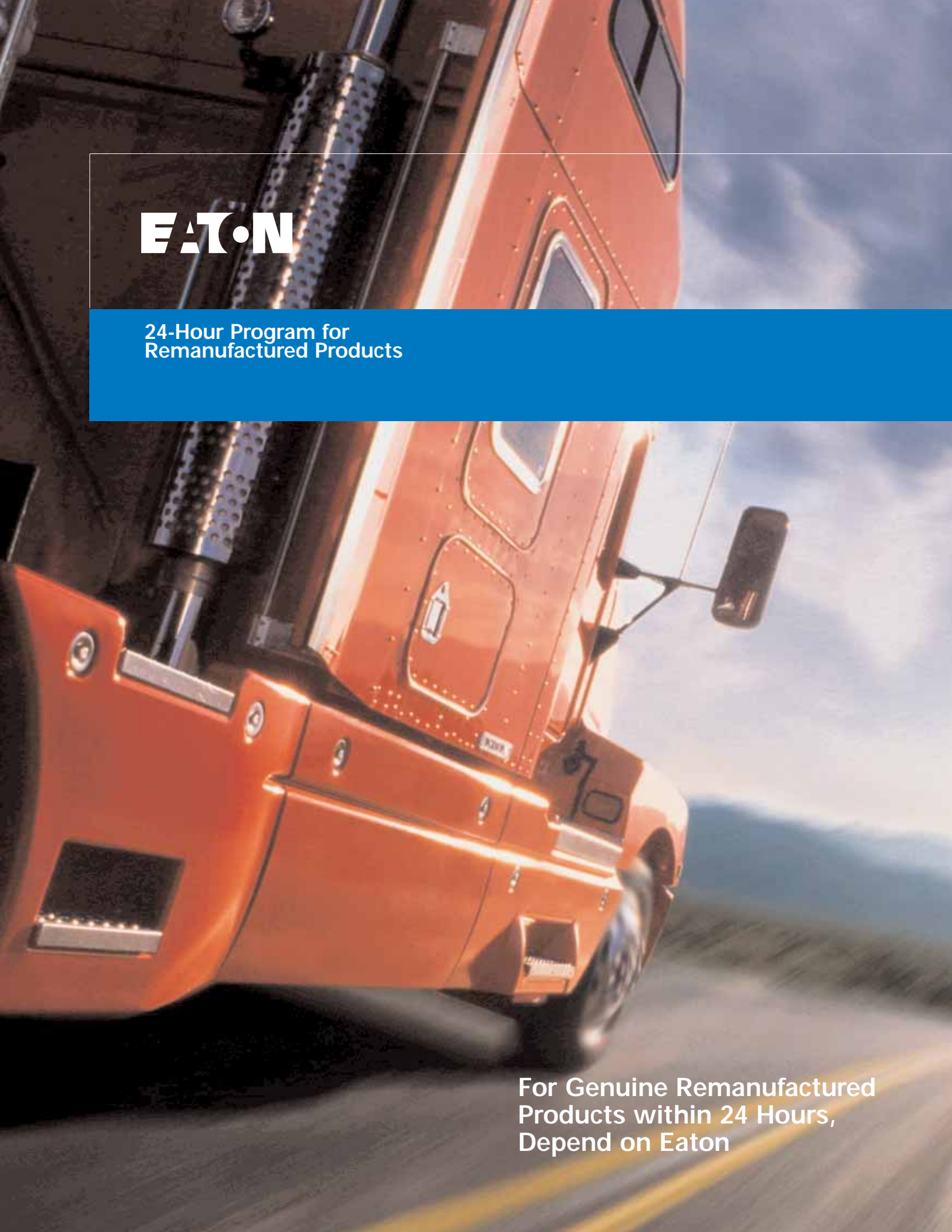


The Eaton logo is displayed in white, bold, sans-serif capital letters. The letter 'A' is stylized with a white dot in the center. The logo is positioned in the upper left quadrant of the image, overlaid on a blue horizontal band.

EATON

**24-Hour Program for
Remanufactured Products**

A close-up, low-angle shot of the front of an orange semi-truck. The truck is moving on a road, as indicated by the blurred background and the road surface. The truck's grille, headlights, and side mirror are visible. The sky is blue with some clouds.

**For Genuine Remanufactured
Products within 24 Hours,
Depend on Eaton**

Install Quality, Not Doubt.

We Assure You

For more than 80 years, engineers have chosen Eaton and Vickers brand products for their quality, reliability and high performance features. Along with providing dedicated customer service, we guarantee that Eaton's Remanufactured Products use 100 percent genuine Eaton parts for longer life at rated conditions. Most importantly, only Eaton offers remanufactured products that continually meet Eaton's original equipment specifications.

Eaton's parts are remanufactured at a specially-dedicated facility in Memphis, Tennessee, with easy access to an overnight shipping network. Whether your need is to complete a quick repair or to fill emergency stock, you can count on Eaton to get it to your distribution center FAST! With our 24 Hour Program, you can be sure that the product you order is shipped within 24 hours.



Program Details

Eaton is pleased to offer the 24-Hour Program for remanufactured product. Distributors may now purchase popular remanufactured rotating groups, remanufactured cartridge kits, and new vane shafts, seals, and bearings with 24 Hour lead times. This program is designed to help you:

- Better fill emergency stock
- Complete a repair for end customers
- Meet the needs of price sensitive customers
- Sell more remanufactured product

What Product is Available?

The availability is based on our historical demand and typical repair needs. A list of the products available is on the following page. Expansion of the program will be considered given the demand of the market.

Is there a premium charge for using the 24-Hour program?

No, the product included is stocked to help you sell more. In fact, new vane component parts, including shafts, seal kits, and bearings, are priced specifically for the remanufacturing market.



Is there a limit to the quantities that can be ordered through the 24-Hour Program?

Yes, no more than nine of any remanufactured rotating group or cartridge kit can be ordered at one time. Also, each vane shaft, bearing, and seal kit must be matched with an order of a vane cartridge kit.

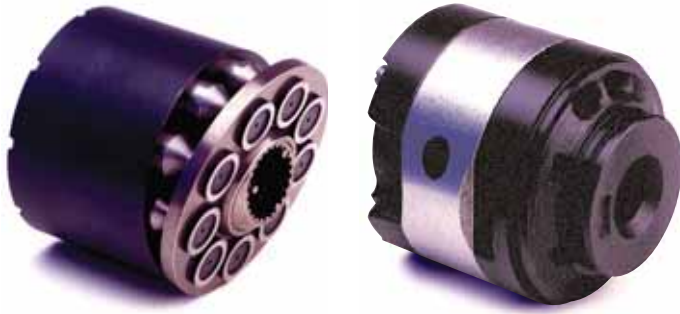
How will orders be shipped?

The 24-Hour Program ship's via the customer's requested method of transportation from Memphis to the desired location.

Is the 24-Hour Program available to distributors outside the USA?

Yes. However, like with domestic customers, all shipping fees including customs fees are paid for by the customer.

Remanufactured Rotating Groups and Kits



Piston Rotating Group

| PART # | DESCRIPTION |
|---------|-------------|
| R923948 | PVE19 |
| R875775 | PVB5 |
| R875773 | PVB6 |
| R938276 | PVB10 |
| R938273 | PVB15 |
| R938274 | PVB20 |
| R938275 | PVB29 |
| R938279 | PVB45 |
| R877420 | PVH57 |
| R877421 | PVH74 |
| R877422 | PVH98 |
| R877419 | PVH131 |

Additional Vane Kit items added by request:

| | |
|------------|----------|
| R02-102516 | 20V12 |
| R02-102541 | 25V14 |
| R421580 | 25VQ21** |
| R421585 | 35VQ35 |
| R419510 | 45VQ50 |

Vane Cartridge Kits

| PART # | DESCRIPTION |
|------------|-------------|
| R02-102513 | 20V5 |
| R02-102514 | 20V8 |
| R02-102515 | 20V11 |
| R02-102517 | 20V14 |
| R02-102542 | 25V17** |
| R02-102546 | 25V17 |
| R02-102547 | 25V21** |
| R02-102543 | 25V21 |
| R421574 | 25VQ21 |
| R02-102560 | 35V25 |
| R02-102565 | 35V30** |
| R02-102561 | 35V30 |
| R02-102562 | 35V35 |
| R02-102567 | 35V38** |
| R02-102563 | 35V38 |
| R421586 | 35VQ38 |
| R02-102576 | 45V42 |
| R02-102577 | 45V50 |
| R02-102578 | 45V60 |
| R419509 | 45VQ60 |

New Vane Component Parts

Shafts

| PART # | DESCRIPTION |
|---------|-----------------|
| M238755 | SHAFT, #1 25V |
| M233624 | SHAFT, #1 35V |
| M233369 | SHAFT, #1 45V |
| M254964 | SHAFT, #1 2520V |
| M258249 | SHAFT, #1 3520V |
| M255533 | SHAFT, #1 4520V |
| M243448 | SHAFT, #1 3525V |
| M233524 | SHAFT, #1 4525V |
| M289083 | SHAFT, #1 4535V |

Bearings

| PART # | DESCRIPTION |
|---------|---|
| M001705 | Bearings 25V/VQ Single, 2520 tandem |
| M038441 | Bearings 35V/VQ Single, 3520, 3525 tandem |
| M131812 | Bearings 45V/VQ Single, 45 tandem |

Seal Kits

| PART # | DESCRIPTION |
|---------|----------------------------------|
| M922850 | Seal Kit 25V Single, 22 design |
| M922851 | Seal Kit 35V Single, 22 design |
| M919850 | Seal Kit 45V Single, 22 design |
| M922856 | Seal Kit 2520V Tandem, 22 design |
| M922859 | Seal Kit 3520V Tandem, 22 design |
| M922863 | Seal Kit 4520V Tandem, 22 design |
| M922862 | Seal Kit 3525V Tandem, 22 design |
| M922865 | Seal Kit 4525V Tandem, 22 design |
| M922866 | Seal Kit 4535V Tandem, 22 design |

Eaton's 24 Hour Program is based on our most popular remanufactured rotating groups and kits.

If you would like more product included in the 24 Hour Program, contact us with your specific needs. We want to hear from you!



Memphis Facility

Eaton
14615 Lone Oak Road
Eden Prairie, MN 55344
USA
Tel: 952 937-9800
Fax: 952 974-7722
www.hydraulics.eaton.com

Eaton
5185 Hickory Hill Road
Memphis, TN 38141 USA
Tel: 901 368-5151
Fax: 901 368-5149

