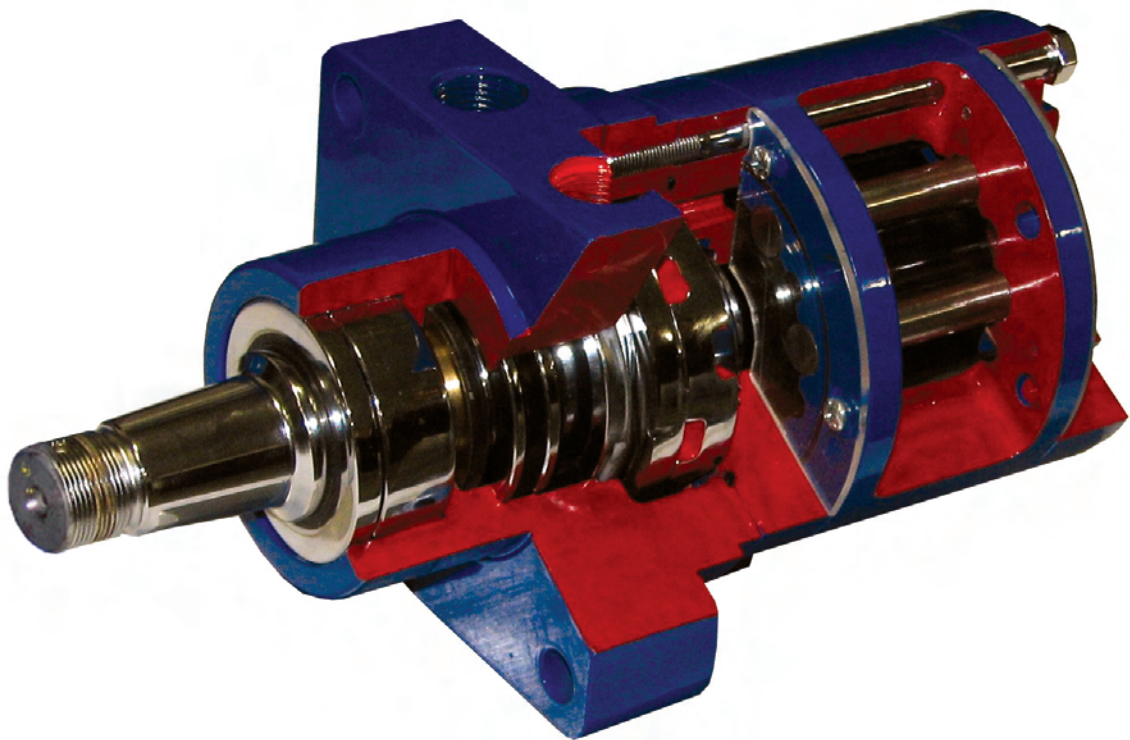


EAT•N

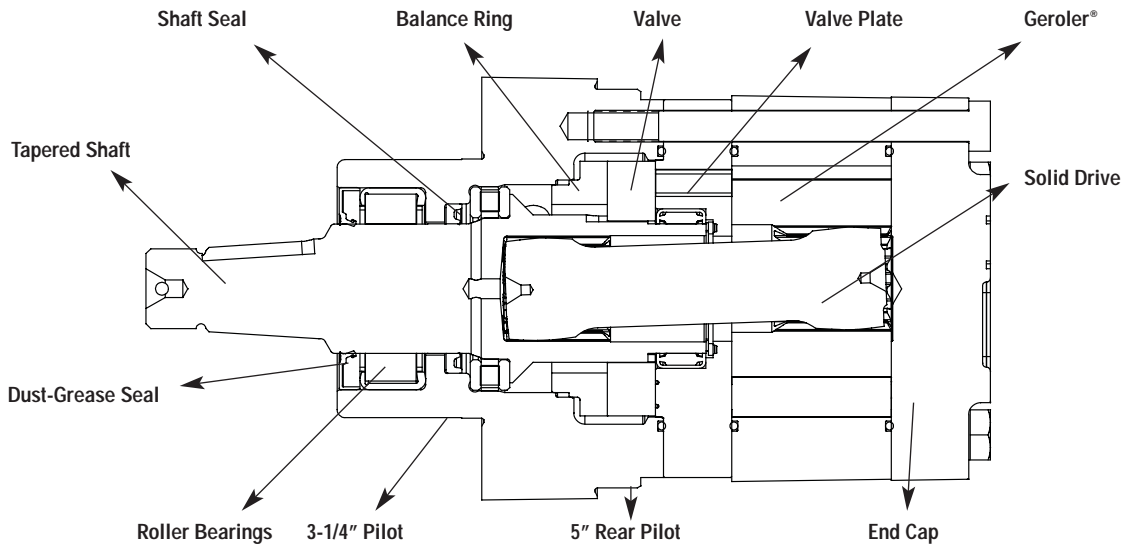
Char-Lynn

**Delta Low Speed High Torque Motor
for Wheel Applications**

Product Focus



General Information



Features:

- Excellent reliability with time proven Char-Lynn components
- Proven disc valve technology with the highest efficiencies in its class
- Leak resistant motor with the front bearing protecting the shaft seal
- Torque up to 10,500 lb-in intermittent duty / Flow up to 30 GPM intermittent
- 12 displacements available from 6.9 to 46 CID
- Shaft sizes up to 1-5/8 inch
- 3-1/4 inch front pilot and 5 inch rear pilot
- STC ports available

Benefits:

- Perfect replacement for Parker® TF-TG and White™ RE motors
- Lowest no load pressure drop which leads to longer life and lower temperature operation
- Highest overall efficiency: more available HP to the system than competitive motors
- The highest side load capacity with 4,500 lbs standard at 3" from the mount face

Parker is a registered trademark of Parker Intangibles LLC.

White is a trademark of White Drive Products, Inc.

Performance Data

DISPLACEMENT	CONTINUOUS FLOW CAPACITY	INTERMITTENT FLOW CAPACITY	CONTINUOUS PRESSURE RATING	INTERMITTENT PRESSURE RATING
cm ³ /r (in ³ /rev)	lpm (gpm)	lpm (gpm)	bar (psi)	bar (psi)
110 (6.9)	75 (20)	95 (25)	200 (3000)	275 (4000)
142 (8.9)	75 (20)	115 (30)	200 (3000)	275 (4000)
194 (12.1)	75 (20)	115 (30)	200 (3000)	275 (4000)
229 (14.3)	75 (20)	115 (30)	200 (3000)	275 (4000)
246 (15.4)	75 (20)	115 (30)	200 (3000)	275 (4000)
293 (18.3)	75 (20)	115 (30)	200 (3000)	275 (4000)
340 (21.2)	75 (20)	115 (30)	200 (3000)	275 (4000)
386 (24.1)	75 (20)	115 (30)	190 (2750)	241 (3500)
459 (28.7)	75 (20)	115 (30)	172 (2500)	200 (3000)
530 (33.1)	75 (20)	115 (30)	138 (2000)	172 (2500)
634 (39.6)	75 (20)	115 (30)	121 (1750)	155 (2250)
736 (46)	75 (20)	115 (30)	103 (1500)	138 (2000)

Note: Top assure best motor life, run motor for approximately one hour at 30% of rated pressure before application to full load. Be sure motor is filled with fluid prior to any load applications.

Maximum Inlet Pressure:
276 bar (4000 psi)
Do not exceed Δ pressure rating (see chart above).

Recommended Fluids:
Premium quality, anti wear type hydraulic oil with a viscosity of no less than 70 SUS at operating temperature.

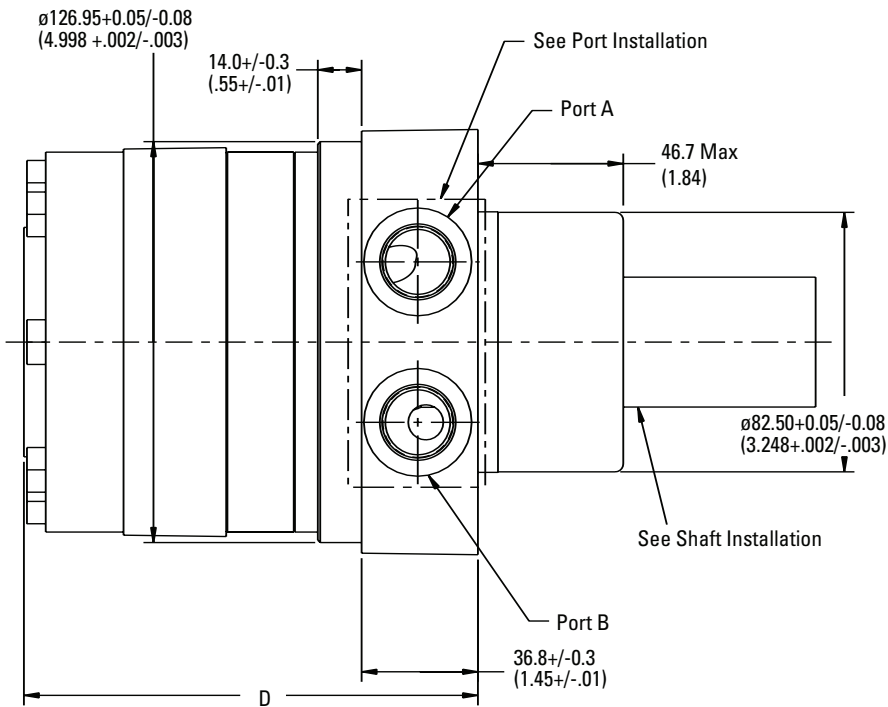
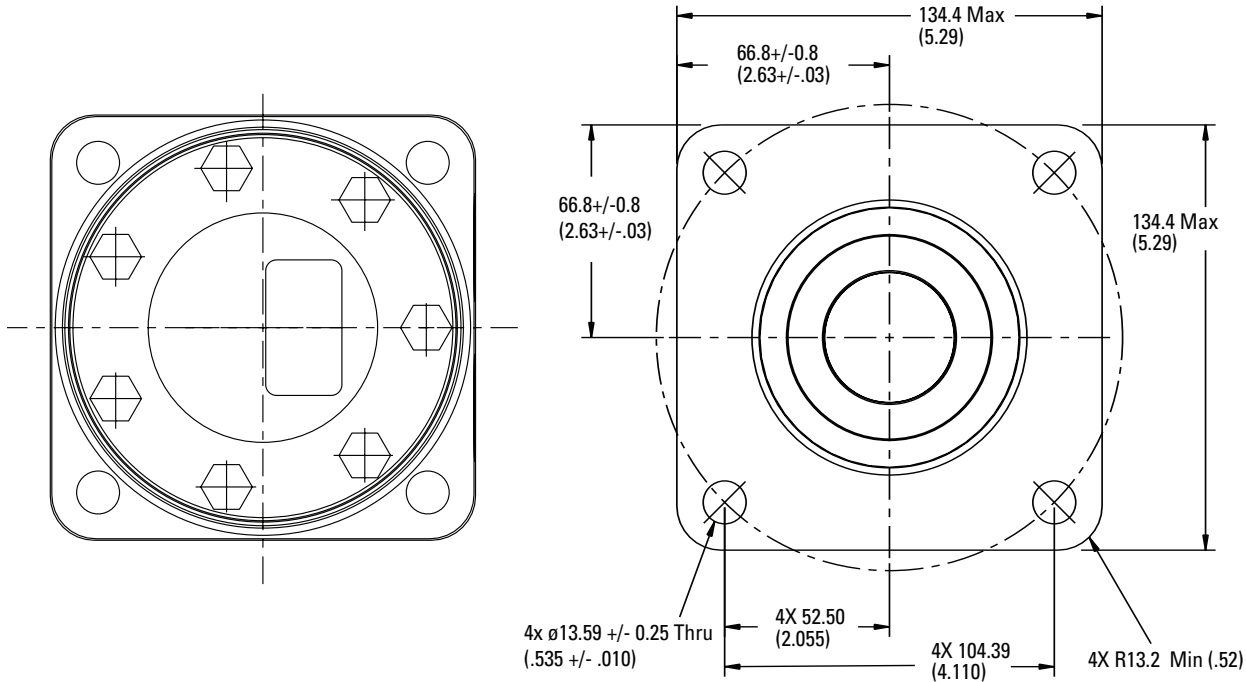
Recommended Maximum System Operating Temp.:
82° C (180 F)
Recommended Filtration:
per ISO cleanliness
Code 4406: 20/18/13

MOUNTING	SHAFT	PORTS	TIMING	DISPLACEMENT			
				6.9 CID	8.9 CID	12.1 CID	14.3 CID
				113 cm ³	146 cm ³	198 cm ³	234 cm ³
Wheel Motor	1-1/4" Tapered	7/8" O-ring	Standard -CCW	184-0005-001	184-0006-001	184-0002-001	184-0001-001
			Standard -CW	184-0025-001	184-0026-001	184-0027-001	184-0028-001
Wheel Motor	1-1/2" 17 T Splined	7/8" O-ring	Standard -CCW	184-0013-001	184-0014-001	184-0015-001	184-0016-001
			Standard -CW	184-0037-001	184-0038-001	184-0039-001	184-0040-001

MOUNTING	SHAFT	PORTS	TIMING	DISPLACEMENT			
				15.4 CID	18.3 CID	21.2 CID	24.1 CID
				252 cm ³	300 cm ³	347 cm ³	395 cm ³
Wheel Motor	1-1/4" Tapered	7/8" O-ring	Standard -CCW	184-0003-001	184-0004-001	184-0007-001	184-0008-001
			Standard -CW	184-0029-001	184-0030-001	184-0031-001	184-0032-001
Wheel Motor	1-1/2" 17 T Splined	7/8" O-ring	Standard -CCW	184-0017-001	184-0018-001	184-0019-001	184-0020-001
			Standard -CW	184-0041-001	184-0042-001	184-0043-001	184-0044-001

MOUNTING	SHAFT	PORTS	TIMING	DISPLACEMENT			
				28.7 CID	33.1 CID	39.6 CID	46.0 CID
				470 cm ³	542 cm ³	649 cm ³	754 cm ³
Wheel Motor	1-1/4" Tapered	7/8" O-ring	Standard -CCW	184-0009-001	184-0010-001	184-0011-001	184-0012-001
			Standard -CW	184-0033-001	184-0034-001	184-0035-001	184-0036-001
Wheel Motor	1-1/2" 17 T Splined	7/8" O-ring	Standard -CCW	184-0021-001	184-0022-001	184-0023-001	184-0024-001
			Standard -CW	184-0045-001	184-0046-001	184-0047-001	184-0048-001

Dimensional Data



DISPLACEMENT CODE	D MAX
069	130.6 (5.14)
089	135.9 (5.35)
121	144.3 (5.68)
143	150.4 (5.92)
154	153.2 (6.03)
183	150.4 (5.92)
212	156.5 (6.16)
241	162.6 (6.40)
287	172.5 (6.79)
331	181.9 (7.16)
396	195.6 (7.70)
460	209.0 (8.23)

Eaton
14615 Lone Oak Road
Eden Prairie, MN 55344
USA
Tel: 952 937-9800
Fax: 952 974-7722
www.hydraulics.eaton.com

Eaton
20 Rosamond Road
Footscray
Victoria 3011
Australia
Tel: (61) 3 9319 8222
Fax: (61) 3 9318 5714

Eaton
Dr.-Reckeweg-Str. 1
D-76532 Baden-Baden
Germany
Tel: (49) 7221 682-0
Fax: (49) 7221 682-788



Char-Lynn

© 2006 Eaton Corporation
All Rights Reserved
Printed in USA
Document No. C-MOLO-TM002-E
September 2006