



H451 Series High Performance Pressure Filter

Flows to 568 L/min (150 USgpm) 310 bar (4500 psi)

Service Data

H451 Series High Performance Pressure Filter

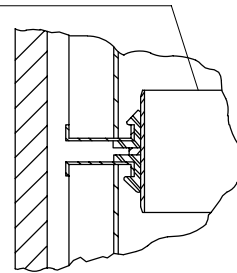
Flows to 568 L/min (150 USgpm) 310 bar (4500 psi)



CAUTION

Before servicing the element, the bleed plug in filter housing must be loosened to relieve hydraulic pressure. This will minimize fluid overflow.

P-227567-01 Element adapter
(req'd. when stacking elements)



Cap sub assembly

NOTE: Bowl kits contain Buna-N seals, to order Viton seals, replace **B** in part number with a **V**.

Example:

From: P-133237-03**B**, for Buna.

To: P-133237-03**V**, for Viton.

P-126255-01 Warning decal (use with bypass valve option code 4)
P-126255-02 Warning decal (use with non-bypass valve option code 1)

Nipple (Non-bypass use with valve option 1)

▲◆♣★ AS568-906 "O"-Ring

▲● AS568-908 "O"-Ring

▲● AS568-014 "O"-Ring

ΔP Indicator
(See model code)

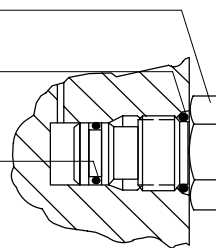
SAE-4 Drain plug

Nameplate & drive screws

P-227533-01 Indicator port plug

▲● AS568-908 "O"-Ring

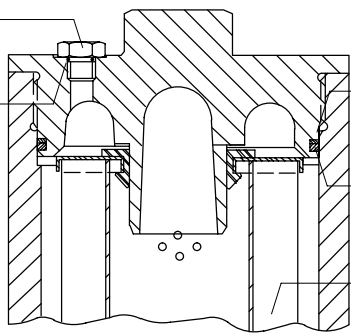
▲● AS568-014 "O"-Ring



- ▲ Included in seal kit P-427466-37 Buna
- Included in seal kit P-427466-39 Viton
- ◆ Included in 9" cylinder kit P-133237-03B
- ♣ Included in 18" cylinder kit P-133237-06B
- ★ Included in 27" cylinder kit P-133237-07B

SAE-4 Bleed plug

▲● AS568-904 "O"-Ring



▲◆◆♠★ 245 B.U. Ring

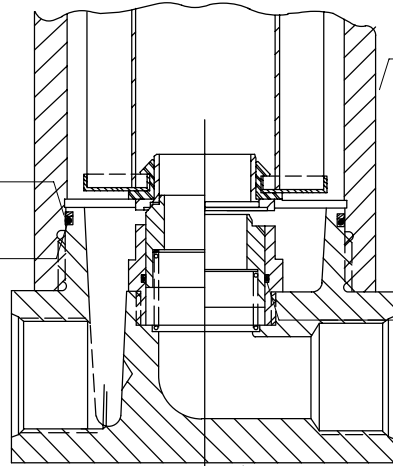
▲◆◆♠★ AS568-245 "O"-Ring

Filter element (See model code)

See bowl kit

▲◆◆♠★ 245 B.U. Ring

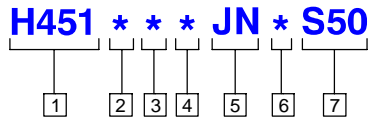
▲◆◆♠★ AS568-245 "O"-Ring



▲● AS568-033 "O"-Ring

Head sub assembly (See model code)

Head Sub Assembly Model Code



1 Filter series

H451

2 Element collapse rating

- 1 – 150 PSID (10 bar)
- 4 – 3000 PSID (210 bar) (H– pak only)

3 Port option

- D** – 1.875-12UN SAE-24 str. thd. (1½” tube)
- E** – 1½” SAE 4-bolt split flange Code 61
- R** – 1½” SAE 4-bolt split flange Code 62
- S** – Subplate mounting

4 Valve option

- 1 – Non–bypass
- 4 – Bypass set at 50 ± 5 PSID (3,4 bar) cracking pressure
- 6 – Bypass set at 90 ± 10 PSID (6,2 bar) cracking pressure

5 ΔP indicator & receptacle options
First designator (Indicator type)

J – No ΔP indicator

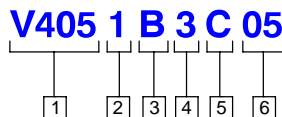
Second designator (Electrical receptacle)
N – No receptacle – Use with visual ΔP indicator.

6 Seal material

- B** – Buna–N
- V** – Viton–A

7 S50 Head sub assembly

Element Model Code



1 Filter element

V405 – For use with H450 series filters

2 Element collapse rating

- 1 – 150 PSID (10 bar)
 - 4 – 3000 PSID (210 bar) (H–pak only)
- NOTE: 1 use only with bypass valve or monitored ΔP indicator

3 Seal material

- B** – Buna–N
- V** – Viton–A

4 Bowl length Element length
mm (in) mm (in)

- 3** – 388,7 (15.3) 229 (9)
 - 6** – 627,9 (24.7) 457 (18)
 - 7** – 863,6 (34.0) 686 (27)
- All meet HF4 specifications.

5 Element construction

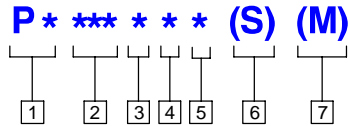
- C** – C–pak (grade 01, 3, 5, 10, 20)
- H** – H–pak (grade 3, 10)
- E** – E–pak (grade 3, 5, 10)

6 Fluid cleanliness ratings

Code	Fluid cleanliness level
03	16/14/12 or better
05	18/16/14 or better
10	20/18/15 or better
20	22/19/16 or better

The table above assumes limited ingress and a single pass of pump flow through the element. For more detailed information, please consult Vickers Guide to Systemic Contamination Control **561** or contact your local Vickers Distributor.

Differential Pressure Indicator Model Code



1 Style option

PV – Visual
PE – Electrical
PD – Electrical/Visual

2 Actuation pressure option

015 – 15 ± 4 PSID (1 bar)
035 – 35 ± 5 PSID (2,4 bar)
070 – 70 ± 7 PSID (4,8 bar)
 (not an option with 330/340 filters)
100 – 100 ± 12 PSID (6,9 bar)

3 Thermal lockout option

N – No thermal lockout
 (not an option with IFI indicator)
T – Thermal lockout
 (standard TLO=80 ± 20° F)

4 Seal option

1 – Buna-N
2 – Viton

5 Receptacle option

B – 5-pin Brad Harrison (41512)
 (not an option with visual indicator)
H – Hirschman (DIN 43650)
 (not an option with visual indicator)
N – No receptacle (use with visual indicator)
 (not an option with IFI indicator)

6 Surge control option

None – No surge control
S – Surge control
 (not an option with 330/340 filters)

7 Filter series option

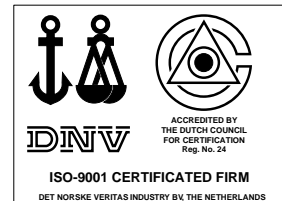
None – Standard
M – 330/340 Filters only

Information contained in this catalog is accurate as of the publication date and is subject to change without notice. Performance values are typical values. Customers are responsible for selecting products for their applications using normal engineering methods.

Eaton Hydraulics

15151 Highway 5
 Eden Prairie, MN 55344
 Telephone: 612 937-7254
 Fax: 612 937-7130
www.eatonhydraulics.com

46 New Lane, Havant
 Hampshire PO9 2NB
 England
 Telephone: (44) 170-548-6451
 Fax: (44) 170-548-7110



Quality System Certified
 Products in this catalog are
 manufactured in an
 ISO-9001-certified site.

EATON